

Erytype Erytype S

Microplates for Smart and Efficient Blood Grouping





Microplates for Smart and Efficient Blood Grouping

- Erytype
- Erytype S

Erytype

Ready to use microplates with dried antisera for routine blood grouping

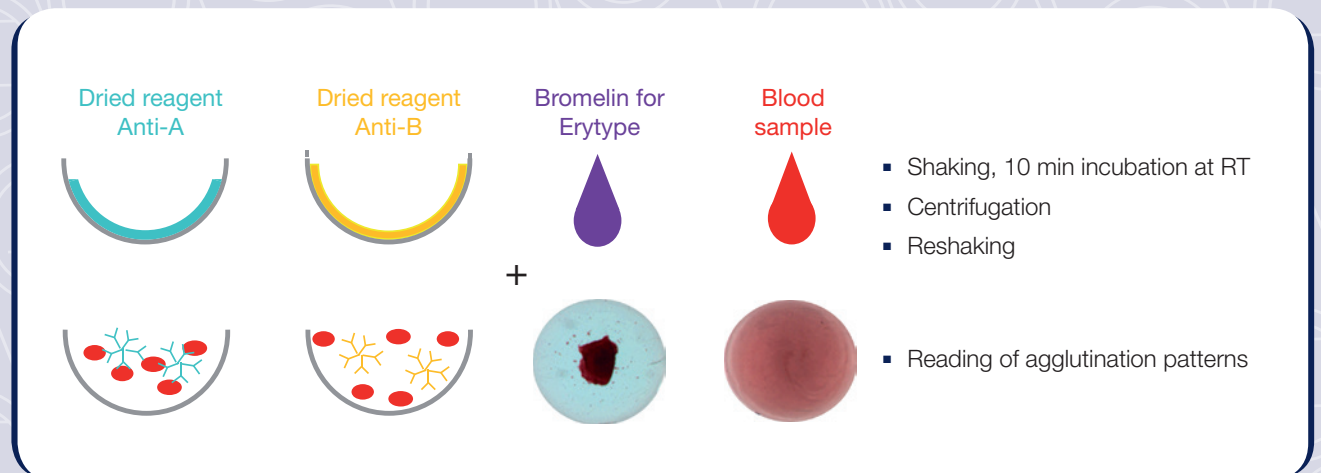
Erytype microplates with the dried monoclonal antisera covers all requirements for routine blood grouping:

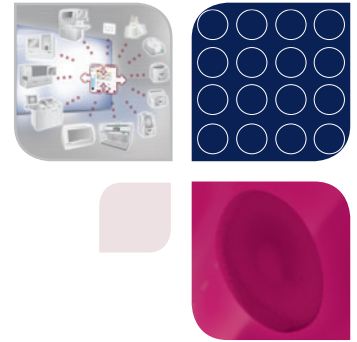
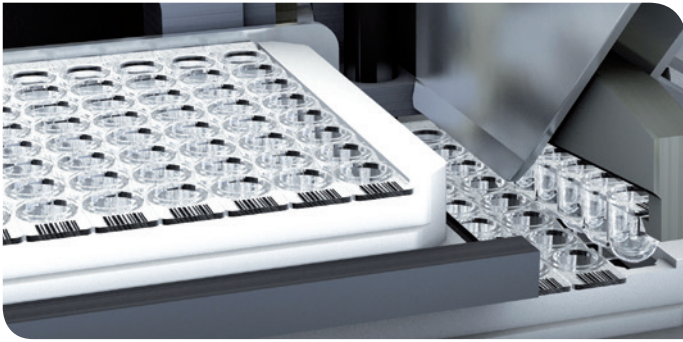
- ABO tests with or without reverse typing
- RhD determination with or without two different RhD (DVI-) antisera
- Rhesus phenotyping with or without C^w
- Kell typing

The ready-to-use microplates ensure a simple, time saving and cost effective processing in manual or automated methods.

Additional equipment required

- Shaker for microplates
- Centrifuge for microplates
- Pipettes 50 µl





Erytype S

Ready-to-use single strip trays with dried antisera for routine blood grouping manually or by the fully automated TANGO infinity system.

Erytype S single strip microplates with dried monoclonal antisera covers all requirements for routine blood grouping:

- ABO tests with or without reverse typing
- RhD determination with or without two different RhD (DVI-) antisera
- Rhesus phenotyping with or without C^w
- Kell typing

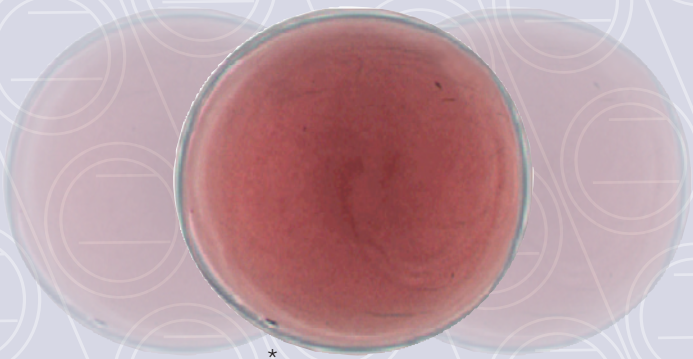
The ready-to-use microplates ensure a simple, time saving and cost effective processing in manual or automated methods in combination with TANGO infinity; the fully automated immunohematology system.

Erytype S is designed for fully automated processing on TANGO infinity.

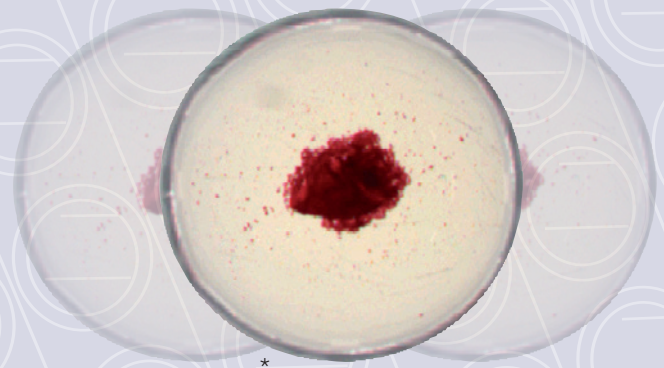


TANGO infinity

Automated Result Interpretation of Agglutination Pattern



*



*

*The result is automatically interpreted by TANGO infinity.

Main Features

	Erytype	Erytype S
▪ Smart	<ul style="list-style-type: none"> ✓ Ready-to-use microplates Easy handling and result interpretation Global selection for your blood grouping 	<ul style="list-style-type: none"> ✓ Ready to use strips in a microplate tray Easy handling and result interpretation/documentation Broad selection of microplates to cover your ABO/Rh requirements
▪ Efficient	<ul style="list-style-type: none"> ✓ 8 to 32 typings with one microplate depending on the assay Opportunity to run it manually or on automated pipetting station Partially processed microplates can be used up to 24 h 	<ul style="list-style-type: none"> ✓ Single strips for 1 or 2 typings To use manually or on the fully automated TANGO infinity system Partially processed plates can be used up to 7 days on TANGO infinity
▪ Specific	<ul style="list-style-type: none"> ✓ High quality monoclonal antisera; does not detect acquired B or RhDVI+ 	<ul style="list-style-type: none"> ✓ High quality monoclonal antisera; does not detect acquired B or RhDVI+

Ordering Information

Catalog #	Description		
Erytype			
806 010	Erytype ABO+D , determination of ABO, RhD and reverse typing (double typing with 2 monoclonal Anti-D reagents) [Anti-A/-B/-AB/-D/-D/-CDE/negative control/blank/A ₁ /A ₂ /B/O]*, 10 plates (80 typings)	806 181	Erytype S Rh+K , for Rh subtyping and determination of Kell (double typing with 2 monoclonal Anti-K reagents) [Anti-D/-C/-c/-E/-e/-K/-K/negative control]*, 10 plates (120 typings)
806 020	Erytype ABO-16 , for determination of ABO and RhD [Anti-A/-B/-AB/-D/-CDE/negative control/Anti-A/-B/-AB/-D/-CDE/negative control]*, 10 plates (160 typings)	806 170	Erytype S Rh+K single , for Rh subtyping and determination of C ^w and Kell (double typing with 2 monoclonal Anti-D reagents) [Anti-D/-D/-C/-c/-E/-e/-C ^w /-K]*, 10 plates (120 typings)
806 030	Erytype ABO-32 , for confirmation of ABO and RhD [Anti-A/-B/-D/-A/-B/-D/-A/-B/-D/-A/-B/-D]*, 10 plates (320 typings)	806 180	Erytype S Rh+K reagent I , for Rh subtyping and determination of C ^w and Kell [Anti-D/-C/-c/-E/-e/-C ^w /-K/negative control]*, 10 plates (120 typings)
806 055	Erytype Rh +K 8-double , for Rh subtyping and determination of K (double typing with 2 monoclonal Anti-C, -c, -E, -e reagents) [Anti-C/-c/-E/-e/-K/negative control/Anti-C/-c/-E/-e/-K/negative control]*, 10 plates (80 typings)	806 186	Erytype S Rh+K reagent II , for Rh subtyping and determination of C ^w and Kell (detection with the 2. monoclonal cell line) [Blank/Anti-C/-c/-E/-e/-C ^w /-K/negative control]*, 10 plates (120 typings)
	<i>* Exact position of the reagents</i>	806 110	Erytype S ABD Confirmation I , for ABO and RhD confirmation [Anti-A/-B/-D/negative control/Anti-A/-B/-D/negative control]*, 10 plates (240 typings)
Erytype S		806 112	Erytype S ABD Confirmation II , for ABO and RhD confirmation (detection with the 2. monoclonal cell line) [Anti-A/-B/-D/negative control/Anti-A/-B/-D/negative control]*, 10 plates (240 typings)
806 105	Erytype S ABO+D , for determination of ABO, RhD and reverse typing (double typing with 2 monoclonal Anti-D reagents) [Anti-A/-B/-D/-D/A ₁ /A ₂ /B/O]*, 10 plates (120 typings)	806 125	Erytype S ABD+Rev. A₁, B, O , for determination of ABO and RhD (double typing with 2 monoclonal Anti-D reagents) [Anti-A/-B/-D/-D/negative control/A ₁ /B/O]*, 10 plates (120 typings)
806 107	Erytype S ABO+D single , for determination of ABO, RhD and reverse typing [Anti-A/-B/-AB/-D/negative control/A ₁ /B/O]*, 10 plates (120 typings)	806 127	Erytype S ABD+Rev. A₁, B , for determination of ABO and RhD (double typing with 2 monoclonal Anti-D reagents) [Anti-A/-B/-AB/-D/-D/negative control/A ₁ /B]*, 10 plates (120 typings)
806 150	Erytype S Rh-Pheno double , for Rh subtyping (double typing with 2 monoclonal Anti-C, -c, -E, -e reagents) [Anti-C/-c/-E/-e/-C/-c/-E/-e]*, 10 plates (120 typings)		<i>* Exact position of the reagents</i>
806 155	Erytype S CDE+K , for Rh subtyping and determination of Kell (double typing with 2 monoclonal Anti-K reagents), [Anti-CDE/-K/-K/negative control/Anti-CDE/-K/-K/negative control]*, 10 plates (240 typings)		Visit www.bio-rad.com/immunohematology for more information.
806 115	Erytype S ABO , for determination of ABO and reverse typing [Anti-A/-B/-AB/negative control/A ₁ /A ₂ /B/O]*, 10 plates (120 typings)		
806 165	Erytype S Rh(D) , for determination of RhD and CDE (double typing with 2 monoclonal Anti-D reagents) [Anti-D/-D/-CDE/negative control/Anti-D/-D/-CDE/negative control]*, 10 plates (240 typings)		

BIO-RAD

**Bio-Rad
Laboratories**

Clinical
Diagnostics Group

Website www.bio-rad.com/diagnostics **Australia** 61-2-9914-2800 **Austria** 43-1-877-8901 **Belgium** +32 (3)710-53-00 **Brazil** +55 (31)3689-6600 **Canada** 1-514-334-4372 **China** 86-21-61698500 **Czech Republic** 420-241-430-532 **Denmark** +45-4452-1000 **Finland** 358-9-804-22-00 **France** 33-1-47-95-60-00 **Germany** +49 (0)89-318-840 **Greece** 30-210-7774396 **Hong Kong** 852-2789-3300 **Hungary** +36-1-459-6100 **India** 1800-180-1224 **Israel** 972-3-9636050 **Italy** +39-02-216091 **Japan** 81-3-6361-7070 **Korea** 82-2-3473-4460 **Mexico** +52 (55)5488-7670 **The Netherlands** +31-318-540666 **New Zealand** 64-9-415-2280 **Norway** +47-23-38-41-30 **Poland** 48-22-3319999 **Portugal** 351-21-472-7700 **Russia** +7-495-721-1404 **Singapore** 65-6415-3170 **South Africa** 27-11-442-85-08 **Spain** 34-91-590-5200 **Sweden** 46-8-555-127-00 **Switzerland** +41 (0)26-674-55-05/06 **Taiwan** 886-2-2578-7189 **Thailand** 662-651-8311 **United Kingdom** +44 (0)20-8328-2000

