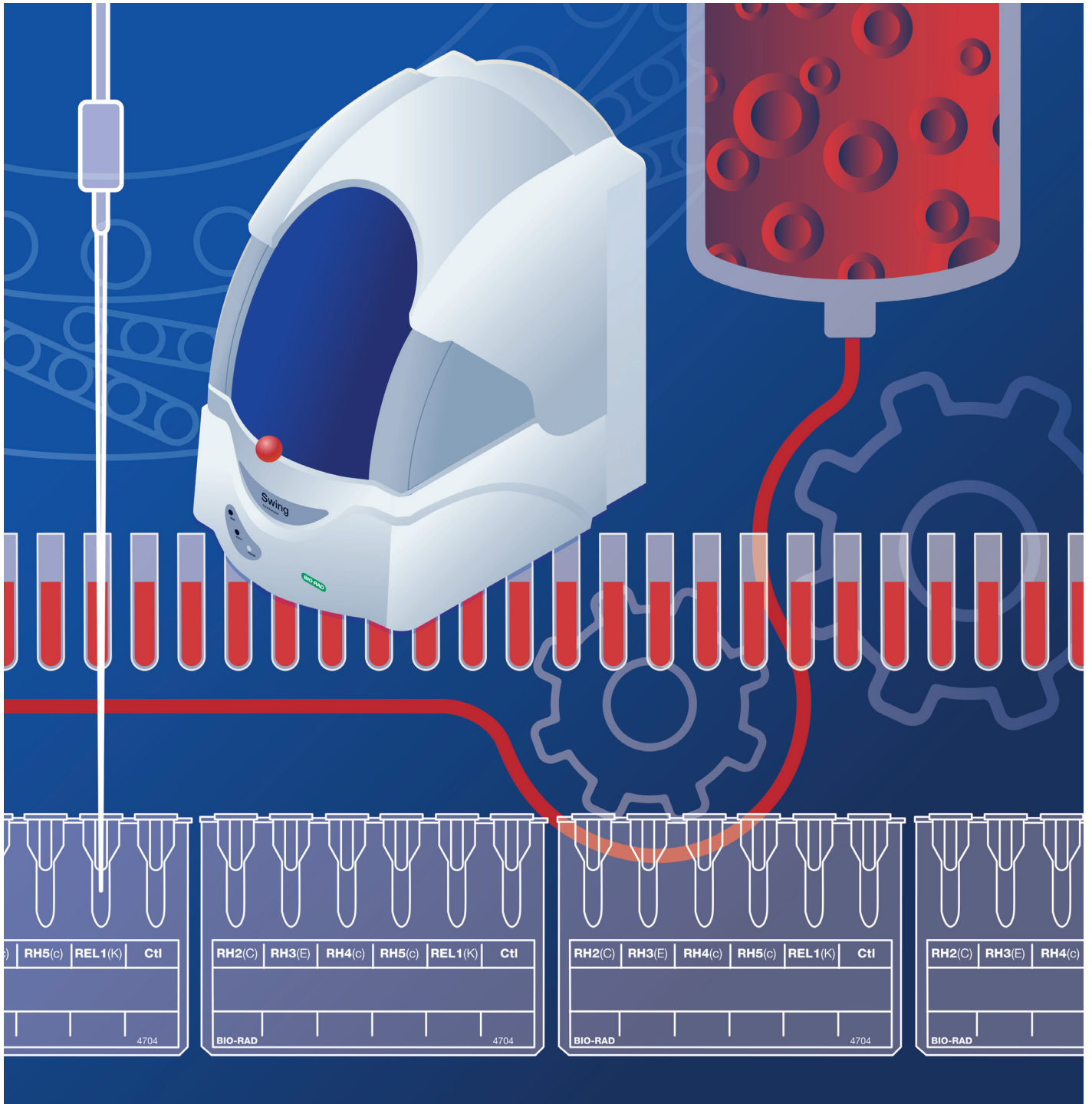


Swing TwinSampler Automatic Pipettor for ID-Cards





Swing TwinSampler

Automatic Pipettor for ID-Cards

Swing TwinSampler, an automatic pipettor for ID-Cards, is the instrument you need for quick and secure automated pipetting.

Through its standardized pipetting and control over all loaded items, Swing highly increases the security in your laboratory.

The possibility to connect it to the Saxo ID-Reader and Banjo ID-Reader enables you to customize the system according to your specific needs.

In combination with a fully automated system, Swing can also serve as a back-up instrument.

Station for dilution
of erythrocytes

Wash station
for pipetting needle

Pipetting arm
for ID-Cards

Barcode
readers



Carousel for up
to 24 ID-Cards

Removable carousel for up to
12 reagent vials and 2 ID-Diluents

Carousel for up
to 19 samples

Choose. Connect. Control. Community.

Choose your preferred testing method and platform



Supreme Security

The identification of installed reagent vials and other resources allows full traceability, including patient identification and test protocols performed, and prevents errors such as the use of incorrect or expired ID-Cards or reagent vials.

Standardized Pipetting

Following the given test protocols precisely, Swing standardizes the cell suspensions and the pipetting volumes.

Compact and Quick

Swing requires little bench space, but it unites all the features of larger automates, such as liquid level detection. It is able to perform all routine and most specialized tests for ID-Cards.

Its compact design makes Swing a fast and efficient pipettor.

User-Friendly Operation

The intuitive software of Swing guides you through the different steps and provides all relevant information.

Swing is fast and easy to use.

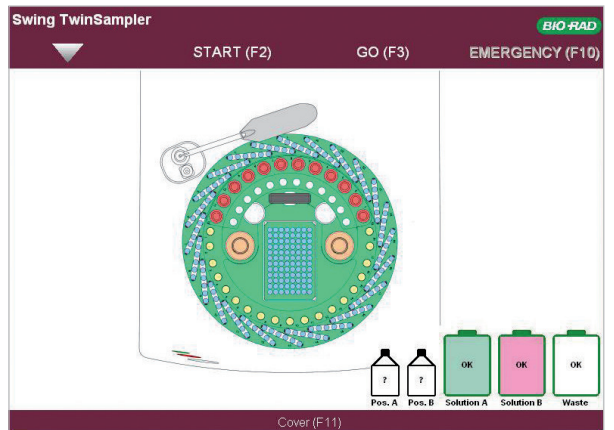
Customize or Extend

Swing is compatible with the Saxo ID-Reader and Banjo ID-Reader and can also be used in a stand-alone configuration.

This enables you to customize your laboratory according to your current and future requirements.



Pipetting of ID-Cards



Main screen



Removable carousel

Specifications

Electrical Data

Voltage	100-230 VAC
Power fluctuation	± 10%
Transient overvoltage	category II
Frequency	50/60 Hz
Power consumption	max. 110 VA

Environmental Conditions

Operating temperature	15°C to 35°C (59°F to 95°F)
Operating humidity	max. 80% rh
Altitude maximum	2,000 m

Dimensions

Width	470 mm
Height	723 mm
Depth	651 mm
Weight	42 kg

Capacity

Samples	19
ID-Cards	24
Reagent vials	12
ID-Diluents	2

Emissions

Heat emission	50 W
Noise level	max. 45 dB(A)
Pollution level	2

Performance*

A, B, AB, D, CDE, ctt	47 samples/h
A, B, DVI-, ctt/A₁, B + Ab screening I, II, III	30 samples/h

* Performance data may vary depending from the loading sequences and requested sample profiles.

Main Features

- Pipetting of ID-Cards
- Positive identification
- Compact
- Liquid level detection
- No consumables needed
- Only one connection to the LIS through IH-Com
- Complete traceability of tests, results and operator

Ordering Information

Catalog

009899

Description

Swing TwinSampler II

The kit includes: Swing TwinSampler, IHD PC with screen, IH-Com Kit Fullversion, Magnet Dispenser (100 pcs), Wash Solution A (10 l), Wash Solution B (10 l), Waste Container (10 l).....1 Unit

Bio-Rad is a trademark of Bio-Rad Laboratories, Inc.

IH-Com and IH-Web are trademarks of Bio-Rad Europe, GmbH in certain jurisdictions.



**Bio-Rad
Laboratories, Inc.**

*For further information, please contact the Bio-Rad office nearest
you or visit our website at bio-rad.com/diagnostics/immunohematology*

*Clinical
Diagnostics Group*

Website www.bio-rad.com/diagnostics **Australia** +61 (2) 9914 2800 **Austria** +43 (0) 1 877 89 01 9 **Belgium** +32 (0) 3 710 53 00 **Brazil** +55 11 3065 7550 **Canada** +1 514 334 4372 **China** +86 21 6169 8500 **Czech Republic** +420 241 431 660 **Denmark** +45 44 52 10 00 **Finland** +358 9 804 22 00 **France** +33 (0)1 47 95 60 00 **Germany** +49 (0) 89 31884 393 **Greece** +30 210 7774396 **Hong Kong** +85 2 2789 3300 **Hungary** +36 1 459 6190 **India** +91 124 4029300 **Israel** +972 03 963 6025 **Italy** +39 024 94 86 600 **Japan** +81 3 6361 7070 **Korea** +82 080 007 7373 **Mexico** +52 (55) 5488 7670 **The Netherlands** +31 (0)318 540 666 **New Zealand** +64 (9)415 2280 **Norway** +47 23 38 41 30 **Poland** +48 22 331 99 99 **Portugal** +351 21 47 27 700 **Russia** +7 495 721 1404 **Singapore** +65 6415 3170 **South Africa** +27 11 442 8508 **Spain** +34 91 490 6580 **Sweden** +46 844 98053 **Switzerland** +41 (0) 61 717 9555 **Taiwan** +886 (2) 2578-7189 **Thailand** (662) 651 8311 **United Kingdom** +44 (0)1923 471301