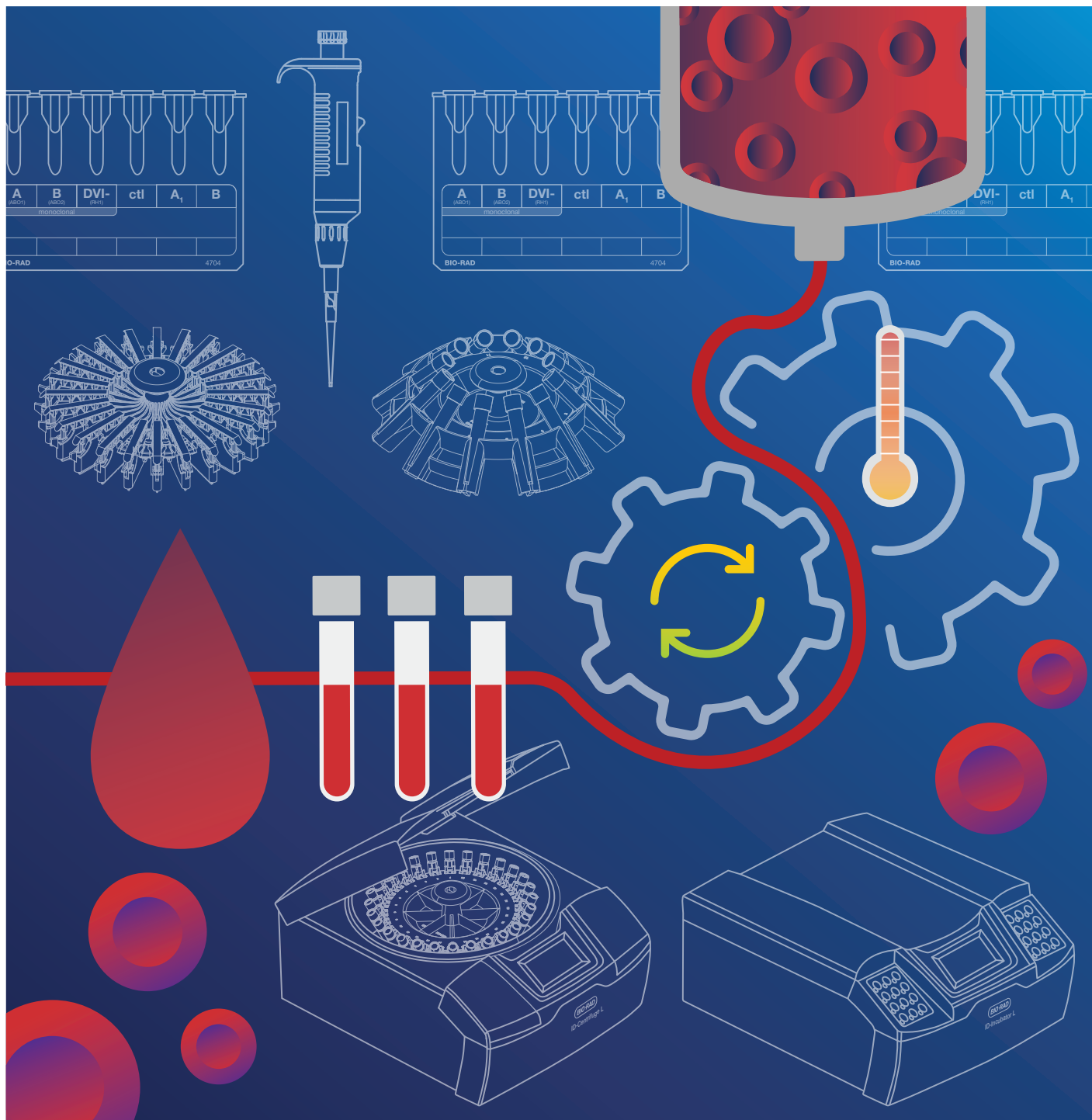


Small Instruments and Accessories

Product Catalog





Contents

Small Instruments and Accessories

Centrifuges

ID-Centrifuge L	4
DiaCent-CW Cell Wash Centrifuge	5

Incubator

ID-Incubator L	6
----------------	---

Accessories

ID-Pipetor FP-6	7
ID-Tips	7
ID-Working Tables	8
ID-Dispensers	8

Barcoding System

Label Printer, Labels, and Ribbon	9
Barcode Scanner	9

*Some products may not be available in your region.
For further information, please contact your local representative.*

ID-Centrifuge L

The ID-Centrifuge L is our latest next-generation centrifuge designed to meet your specific needs.

Use both ID-Cards and tubes in a single instrument.

Our centrifuge technology helps you standardize your manual procedures.

Technical Specifications

Performance

RCF maximum	1,000 g (for tubes)
RCF	85 g (for ID-Cards)

Electrical Data

Voltage	100-240 VAC
Frequency	50/60 Hz

Dimensions

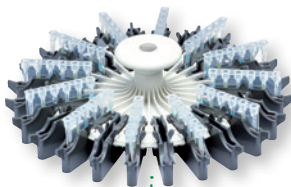
Width	380 mm
Height	230 mm
Depth	500 mm
Weight	13 kg

(heads not included)

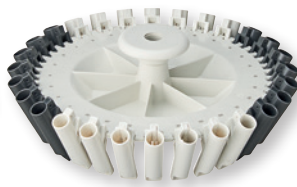
Main Features

- Only one centrifuge for tubes and ID-Cards
- Automatic detection of the head type
- Automatic selection of the appropriate program
- Head for post-transportation ID-Card centrifugation with adapted program (5 minutes at 85 g)
- 28-tube capacity
- Panel PC touchscreen with easy-to-use interface (icon based)
- 4 compatible centrifuge heads
- Multi-language software

Head 24 ID-Cards



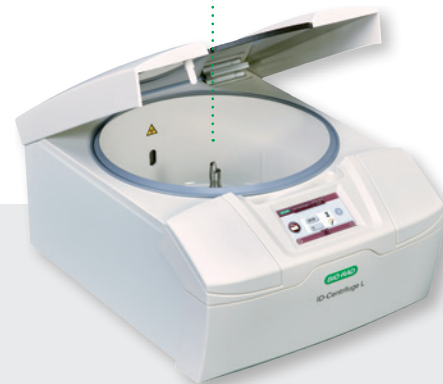
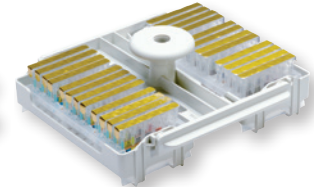
Head 28 tubes



Head 12 tubes



Head 2 racks



Ordering Information

Catalog #	Description
-----------	-------------

ID-Centrifuge L

009201	ID-Centrifuge L , 1 unit
009410	Head 24 ID-Cards , 1 unit
009415	Head 28 tubes , 1 unit
009413	Head 12 tubes , 1 unit
009414	Head 2 racks , 1 unit

DiaCent-CW Cell Wash Centrifuge

This instrument is specially developed for conventional tube techniques that require cells to be washed and tubes to be centrifuged.

Two centrifuges are available: one for 12 × 75 mm tubes and one for 10 × 75 mm tubes.

Technical Specifications

Performance

Speed maximum	2,500 rpm
RCF maximum	780 g

Electrical Data

Voltage	100-240 VAC
Frequency	50/60 Hz

Dimensions

Width	300 mm
Height	260 mm
Depth	400 mm
Weight	9.2 kg

(centrifuge head included)

Main Features

- Fully automated cell wash centrifuge for 24 tubes
- Adjustable cell suspensions (standard 3%)
- Monitored by microprocessor
- Water alarm (if water is used instead of NaCl solution)
- RPM and RCF are displayed (LCD) in English, French, German, Italian, Spanish, and Portuguese
- Adjustable centrifugation time and speed for each parameter in every function



Ordering Information

Catalog #	Description
-----------	-------------

DiaCent-CW

850000	DiaCent-CW for tubes of 12 mm diameter, 1 unit
850020	DiaCent-CW for tubes of 10 mm diameter, 1 unit
850012	Accessory head for tubes of 12 mm diameter, 1 unit
850010	Accessory head for tubes of 10 mm diameter, 1 unit

ID-Incubator L

The ID-Incubator L is our latest next-generation incubator designed to meet your specific needs. Use both ID-Cards and tubes in a single instrument. Our incubator can help you standardize your manual work.

Technical Specifications

Electrical Data

Voltage **100-240 VAC**
 Frequency **50/60 Hz**

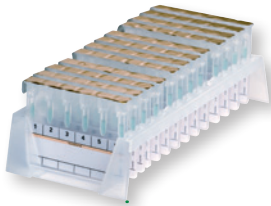
Dimensions

Width **380 mm**
 Height **230 mm**
 Depth **500 mm**
 Weight **13 kg**
 (heads not included)

Main Features

- Incubator for both tubes and ID-Cards
- Independent incubation areas (ID-Cards and/or tubes)
- Up to 36 ID-Card and 24 tube capacity
- Panel PC touch-screen with easy-to-use interface (icon-based)
- Multi-language software
- Batch-specific timers (3 for ID-Cards, 2 for tubes)
- Standard program: 15 minutes at 37°C
- Programmable incubation time

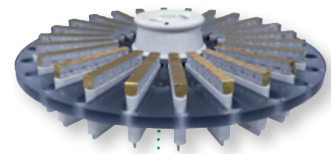
ID-Card rack



Head 24 ID-Cards



Saxo centrifuge head



Ordering Information

Catalog #	Description
ID-Incubator L	
009203	ID-Incubator L, 1 unit

Bio-Rad offers accessories specially designed for use in the ID-System. They are ergonomic, easy to handle, and suitable for both right-handed and left-handed users.

ID-Pipettor FP-6

Main Features

- Manual pipettor for all tests in the ID-System
- Dispensing volumes: 24 x 12.5 μ l, 12 x 25 μ l, 6 x 50 μ l
- To be used with disposable ID-Tips
- Includes tip ejector

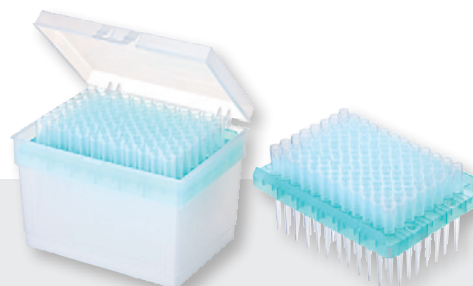


Ordering Information

Catalog #	Description
ID-Pipettor FP-6	
009651	ID-Pipettor FP-6, 1 unit

ID-Tips

Bio-Rad offers two types of ID-Tips with sharp or flat points. Both types are suitable for ID-Pipettors. Different pack sizes are available depending on your needs.



Ordering Information

Catalog #	Description
ID-Tips	
009622	ID-Microtips with sharp point, 1 bag with 1,000 pieces
009609	ID-Microtips box sharp point, 1 box
009608	ID-Microtips refill racks sharp point, 5 refill racks with 96 ID-Microtips each

ID-Working Tables

To facilitate your manual work, we offer two ID-Working Tables: one for tubes, the other for ID-Cards.

The tube and ID-Card racks can be combined as required and are easy to handle for both right-handed and left-handed users.

Technical Specifications

Dimensions

Tube rack

Width	150 mm
Height	40 mm
Depth	330 mm

ID-Card rack

Width	180 mm
Height	25 mm
Depth	330 mm

The manual ID-Working Tables can be used in combination with the Banjo ID-Reader or Saxo ID-Reader and IH-Com Data Management Software, as pipetting management is included in the IH-Com Data Management Software.

Main Features

- Modular Perspex holder
- The table for ID-Cards has a capacity for 12 samples and 24 ID-Cards
- The table for tubes has a capacity for 24 sample tubes and 36 dilution tubes
- Tube and ID-Card racks can be easily cleaned
- Color-coded for easy and clear identification



Ordering Information

Catalog #	Description
-----------	-------------

ID-Working Tables

009660	ID-Working Tables kit (contains 1 table for ID-Cards and 1 table for tubes), 1 unit
009661	ID-Working Table for ID-Cards, 1 unit
009662	ID-Working Table for tubes, 1 unit

ID-Dispensers

Specially developed for the ID-System, these two ID-Dispensers can be used with the ID-Working Tables. They deliver serial dispensing of 0.5 ml or 1 ml of ID-Diluent 1 or ID-Diluent 2.

They can be used with 100 ml and 500 ml bottles. Volume can also be manually adjusted.



Ordering Information

Catalog #	Description
-----------	-------------

ID-Dispenser

009612	ID-Dispenser red (ID-Diluent 1), 1 unit
009614	ID-Dispenser green (ID-Diluent 2), 1 unit
009613	ID-Diluent holder for 100 ml bottles, 1 unit

Our barcoding system includes a printer and software plus a barcode scanner, which can be used both in manual work and with instruments.

The barcode printer is easy to use and well-suited to sample tubes thanks to the label size (58 x 19 mm).

Label Printer, Labels, and Ribbon

Technical Specifications

Connections	USB
Electrical Data	
Voltage	100-240 VAC
Frequency	50/60 Hz
Dimensions	
Width	177.5 mm
Height	150.7 mm
Length	220.8 mm

Main Features

- Prints labels for ID-Cards (IH-Com manual workplace) and for different kinds of barcodes (e.g. sample tubes or reagent vials)
- Prints common barcode types: Code 128, Codabar, Interleaved 2 of 5, Code 39



Ordering Information

Catalog #	Description
Label Printer, Labels and Ribbon	
12019022	Zebra ZD421 label printer, 1 unit
12018318	Wax ribbon for label printer, 12 rolls
000125	Labels 58 x 19 mm, 3,315 pieces
E009006	Thermal labels 66 x 20 mm, 3,000 pieces

Barcode Scanner

Technical Specifications

Optical Information	
Sensor	Wide VGA - 752 x 480 pixels
Wavelength	650 nm
Dimensions	
Width	152 mm
Height	153 mm
Depth	68 mm
Weight	150 g

Main Features

- Easy-to-use 2D area imager for manual or semi-automated procedures
- Reads all common 1D and 2D codes
- For handheld and hands-free operation



Ordering Information

Catalog #	Description
Barcode Scanner	
0560081	Barcode Scanner Heron HD3430, 1 unit

Bio-Rad is a trademark of Bio-Rad Laboratories, Inc.
IH-Com is a trademark of Bio-Rad Europe GmbH in certain jurisdictions.



**Bio-Rad
Laboratories, Inc.**

**For further information, please contact the Bio-Rad office nearest
you or visit our website at bio-rad.com/diagnostics/immunohematology**

*Clinical
Diagnostics Group*

Website www.bio-rad.com/diagnostics **Australia** +61 (2) 9914 2800 **Austria** +43 (0) 1 877 89 01 9 **Belgium** +32 (0) 3 710 53 00 **Brazil** +55 11 3065 7550
Canada +1 514 334 4372 **China** +86 21 6169 8500 **Czech Republic** +420 241 431 660 **Denmark** +45 44 52 10 00 **Finland** +358 9 804 22 00
France +33 (0) 1 47 95 60 00 **Germany** +49 (0) 89 31884 393 **Greece** +30 210 7774396 **Hong Kong** +85 2 2789 3300 **Hungary** +36 1 459 6190
India +91 124 4029300 **Israel** +972 03 963 6025 **Italy** +39 024 94 86 600 **Japan** +81 3 6361 7070 **Mexico** +52 (55) 5488 7670 **The Netherlands** +31 (0) 318 540 666
New Zealand +64 (9) 415 2280 **Norway** +47 23 38 41 30 **Poland** +48 22 331 99 99 **Portugal** +351 214 727 700 **Republic of Korea** +82 080 007 7373
Russia +7 (495) 721-14-04 **Singapore** +65 6415 3170 **South Africa** +27 11 442 8508 **Spain** +34 91 49 06 580 **Sweden** +46 844 98053
Switzerland +41 (0) 61 717 9555 **Taiwan** +886 (2) 2578-7189 **Thailand** (662) 651 8311 **United Kingdom** +44 (0) 1923 471301