



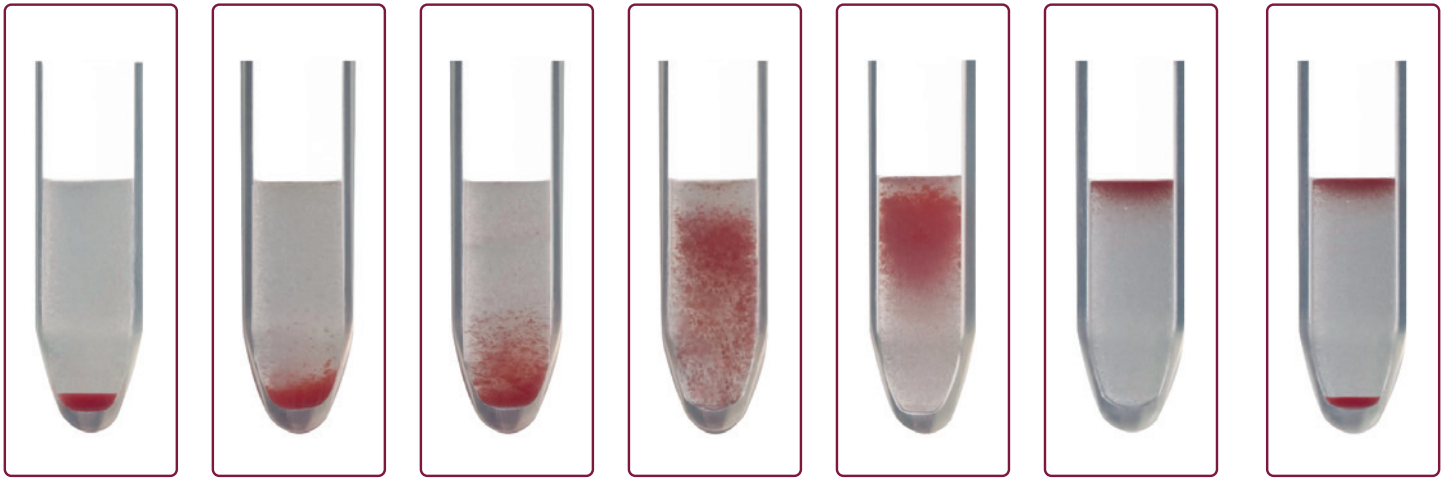
# ID-System

Quick Guide





# ID-Card Interpretation



-

+

+

++

+++

++++

dp

(double population)



# ID-System Quick Guide

<b>1</b>	Blood Grouping	<b>1/01 – 1/22</b>
<b>2</b>	Phenotyping Rh/K	<b>2/01 – 2/04</b>
<b>3</b>	Typing of Partial RhD	<b>3/01 – 3/04</b>
<b>4</b>	Antibody Screening	<b>4/01 – 4/20</b>
<b>5</b>	Antibody Identification	<b>5/01 – 5/06</b>
<b>6</b>	Compatibility Tests	<b>6/01 – 6/08</b>
<b>7</b>	Direct Antiglobulin Test (DAT)	<b>7/01 – 7/10</b>
<b>8</b>	Type and Screen	<b>8/01 – 8/02</b>
<b>9</b>	Reverse Grouping with Antibody Screening	<b>9/01 – 9/06</b>
<b>10</b>	Antigen Profiles	<b>10/01 – 10/04</b>
<b>11</b>	Single Antigen Testing	<b>11/01 – 11/18</b>



# Blood Grouping

<b>1/01 and 1/02</b>	Blood Grouping ABO and RhD	Human Antibodies
<b>1/03 and 1/04</b>	Blood Grouping ABO and RhD	Monoclonal Antibodies
<b>1/05 and 1/06</b>	Blood Grouping ABO and RhD/Newborns	Human Antibodies
<b>1/07 and 1/08</b>	Blood Grouping ABO and RhD/Newborns	Monoclonal Antibodies
<b>1/09 and 1/10</b>	Blood Grouping ABD Confirmation	Human Antibodies
<b>1/11 and 1/12</b>	Blood Grouping ABD Confirmation	Monoclonal Antibodies
<b>1/13 and 1/14</b>	Blood Grouping ABO and RhD Combined with Reverse Grouping	Human Antibodies
<b>1/15 and 1/16</b>	Blood Grouping ABO and RhD Combined with Reverse Grouping	Monoclonal Antibodies
<b>1/17 and 1/18</b>	Reverse Grouping	A <sub>1</sub> -B
<b>1/19 and 1/20</b>	Reverse Grouping	A <sub>1</sub> -A <sub>2</sub> -B/A <sub>1</sub> -B-O
<b>1/21 and 1/22</b>	Reverse Grouping	A <sub>1</sub> -A <sub>2</sub> -B-O







# Blood Grouping ABO and RhD

# Human Antibodies

## Preparing the Sample Suspension

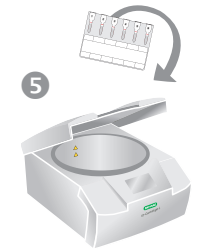
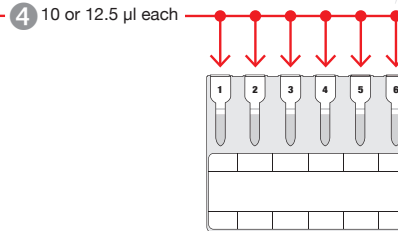
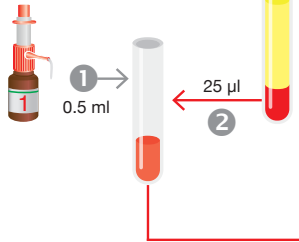
## Incubation

## Pipetting (1 test per ID-Card)

## Centrifugation

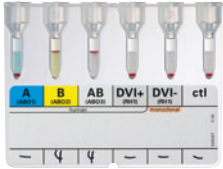
ID-Diluent 1

Packed cells



6 Read the reaction(s)

## Product Pictures



**ABO/RhD**  
(Id-n°: 50031)



**ID-Diluent 1**  
(Id-n°: 05751)  
100 ml/500 ml

### Ordering Information

Catalog # Description

#### ABO/RhD

001334	A, B, AB, DVI+, DVI-, ctl (Id-n°: 50031), 4 x 12
001337	A, B, AB, DVI+, DVI-, ctl (Id-n°: 50031), 24 x 12
001336	A, B, AB, DVI+, DVI-, ctl (Id-n°: 50031), 60 x 12
001335	A, B, AB, DVI+, DVI-, ctl (Id-n°: 50031), 112 x 12

#### ID-Diluent 1

009160	<b>Modified Bromelin solution for red cell suspensions and enzyme tests</b> (Id-n°: 05751), 2 x 100 ml
009180	<b>Modified Bromelin solution for red cell suspensions and enzyme tests</b> (Id-n°: 05751), 1 x 500 ml

Visit [www.bio-rad.com/immunohematology](http://www.bio-rad.com/immunohematology) for more information ■ *This Quick Guide does not replace the corresponding box-insert!*

© Bio-Rad Laboratories, Inc.



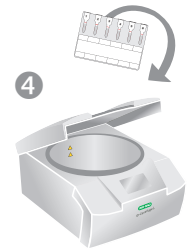
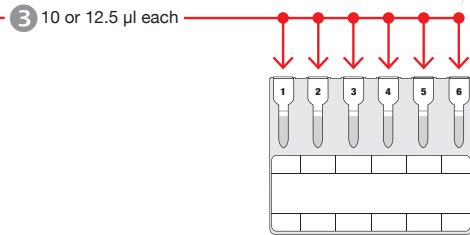
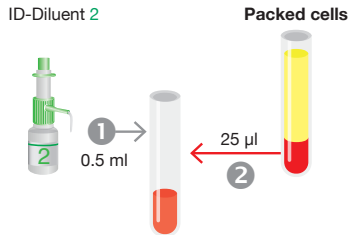
# Blood Grouping ABO and RhD

# Monoclonal Antibodies

## Preparing the Sample Suspension

## Pipetting (1 test per ID-Card)

## Centrifugation



5 Read the reaction(s)

## Product Pictures



**DiaClon ABO/Rh for Patients**  
(ld-n°: 50012)



**DiaClon ABO/Rh for Donors**  
(ld-n°: 51011)



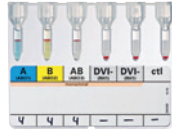
**DiaClon ABO/D**  
(ld-n°: 50481)



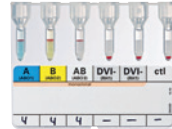
**DiaClon ABO/D + DAT**  
(ld-n°: 50492)



**DiaClon ABO/DVI+/DVI- + DAT**  
(ld-n°: 51160)



**DiaClon ABO/DVI- for Patients**  
(ld-n°: 52040)



**DiaClon ABO/DVI-**  
(ld-n°: 52050)



**ID-Diluent 2**  
(ld-n°: 05761)  
100 ml/500 ml

## Ordering Information

Catalog # Description

### DiaClon ABO/Rh for Patients

001044	<b>A, B, AB, DVI-, CDE, ctl</b> (ld-n°: 50012), 4 x 12
001043	<b>A, B, AB, DVI-, CDE, ctl</b> (ld-n°: 50012), 24 x 12
001046	<b>A, B, AB, DVI-, CDE, ctl</b> (ld-n°: 50012), 60 x 12
001045	<b>A, B, AB, DVI-, CDE, ctl</b> (ld-n°: 50012), 112 x 12

### DiaClon ABO/Rh for Donors

001037	<b>A, B, AB, DVI+, CDE, ctl</b> (ld-n°: 51011), 4 x 12
001033	<b>A, B, AB, DVI+, CDE, ctl</b> (ld-n°: 51011), 24 x 12
001039	<b>A, B, AB, DVI+, CDE, ctl</b> (ld-n°: 51011), 60 x 12
001038	<b>A, B, AB, DVI+, CDE, ctl</b> (ld-n°: 51011), 112 x 12

### DiaClon ABO/D

001324	<b>A, B, AB, DVI+, DVI-, ctl</b> (ld-n°: 50481), 4 x 12
001323	<b>A, B, AB, DVI+, DVI-, ctl</b> (ld-n°: 50481), 24 x 12
001326	<b>A, B, AB, DVI+, DVI-, ctl</b> (ld-n°: 50481), 60 x 12
001325	<b>A, B, AB, DVI+, DVI-, ctl</b> (ld-n°: 50481), 112 x 12

### DiaClon ABO/D + DAT

001344	<b>A, B, DVI-, DVI-, ctl, DAT</b> (ld-n°: 50492), 4 x 12
001347	<b>A, B, DVI-, DVI-, ctl, DAT</b> (ld-n°: 50492), 24 x 12
001346	<b>A, B, DVI-, DVI-, ctl, DAT</b> (ld-n°: 50492), 60 x 12
001345	<b>A, B, DVI-, DVI-, ctl, DAT</b> (ld-n°: 50492), 112 x 12

### DiaClon ABO/DVI+/DVI- + DAT

001374	<b>A, B, DVI+, DVI-, ctl, DAT</b> (ld-n°: 51160), 4 x 12
001376	<b>A, B, DVI+, DVI-, ctl, DAT</b> (ld-n°: 51160), 60 x 12

### DiaClon ABO/DVI- for Patients

001294	<b>A, B, AB, DVI-, DVI-, ctl</b> (ld-n°: 52040), 4 x 12
001297	<b>A, B, AB, DVI-, DVI-, ctl</b> (ld-n°: 52040), 24 x 12
001296	<b>A, B, AB, DVI-, DVI-, ctl</b> (ld-n°: 52040), 60 x 12

### DiaClon ABO/DVI-

001424	<b>A, B, AB, DVI-, DVI-, ctl</b> (ld-n°: 52050), 4 x 12
001427	<b>A, B, AB, DVI-, DVI-, ctl</b> (ld-n°: 52050), 24 x 12
001425	<b>A, B, AB, DVI-, DVI-, ctl</b> (ld-n°: 52050), 112 x 12

### ID-Diluent 2

009260	<b>Modified LISS for red cell suspensions</b> (ld-n°: 05761), 2 x 100 ml
009280	<b>Modified LISS for red cell suspensions</b> (ld-n°: 05761), 1 x 500 ml

Visit [www.bio-rad.com/immunohematology](http://www.bio-rad.com/immunohematology) for more information ■ *This Quick Guide does not replace the corresponding box-insert!*

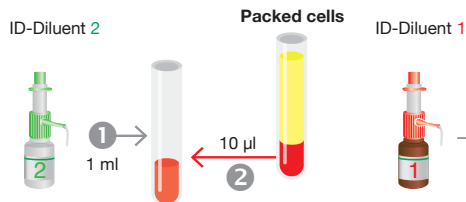
© Bio-Rad Laboratories, Inc.



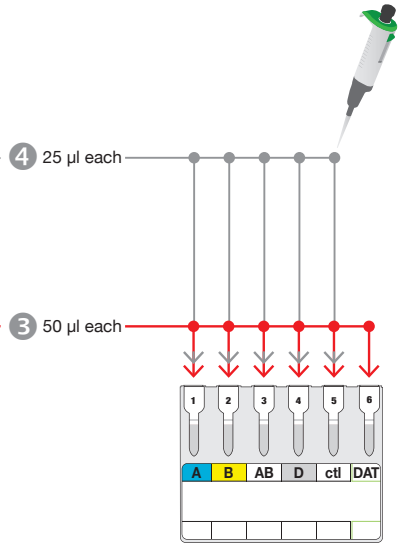
# Blood Grouping ABO and RhD/Newborns

# Human Antibodies

## Preparing the Sample Suspension



## Pipetting (1 test per ID-Card)



## Incubation



## Centrifugation



## Product Pictures



**ABO/Rh for Newborns**  
(Id-n°: 50061)



**ID-Diluent 1**  
(Id-n°: 05751)  
100 ml/500 ml



**ID-Diluent 2**  
(Id-n°: 05761)  
100 ml/500 ml

## Ordering Information

Catalog # Description

### ABO/Rh for Newborns

001017	A, B, AB, D, cti/DAT (Id-n°: 50061), 4 x 12
001020	A, B, AB, D, cti/DAT (Id-n°: 50061), 24 x 12
001018	A, B, AB, D, cti/DAT (Id-n°: 50061), 60 x 12
001019	A, B, AB, D, cti/DAT (Id-n°: 50061), 112 x 12

### ID-Diluent 1

009160	Modified Bromelin solution for red cell suspensions and enzyme tests (Id-n°: 05751), 2 x 100 ml
009180	Modified Bromelin solution for red cell suspensions and enzyme tests (Id-n°: 05751), 1 x 500 ml

### ID-Diluent 2

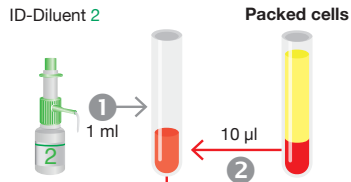
009260	Modified LISS for red cell suspensions (Id-n°: 05761), 2 x 100 ml
009280	Modified LISS for red cell suspensions (Id-n°: 05761), 1 x 500 ml



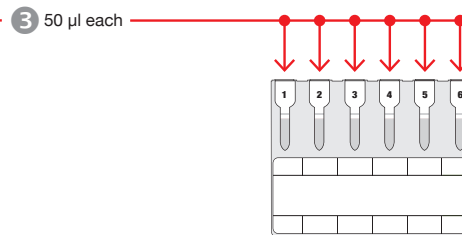
# Blood Grouping ABO and RhD/Newborns

# Monoclonal Antibodies

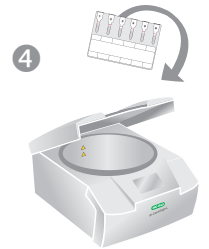
## Preparing the Sample Suspension



## Pipetting (1 test per ID-Card)



## Centrifugation



Read the reaction(s)

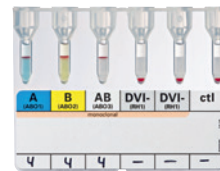
## Product Pictures



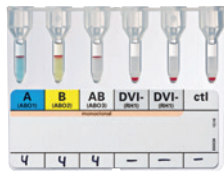
**DiaClon ABO/Rh  
for Newborns DVI+**  
(Id-n°: 50961)



**DiaClon ABO/Rh  
for Newborns DVI-**  
(Id-n°: 50071)



**DiaClon ABO/DVI-  
for Patients**  
(Id-n°: 52040)



**DiaClon ABO/DVI-**  
(Id-n°: 52050)



**ID-Diluent 2**  
(Id-n°: 05761)  
100 ml/500 ml

## Ordering Information

Catalog # Description

### DiaClon ABO/Rh for Newborns DVI+

001047	A, B, AB, DVI+, ctl, DAT (Id-n°: 50961), 4 x 12
001048	A, B, AB, DVI+, ctl, DAT (Id-n°: 50961), 24 x 12
001049	A, B, AB, DVI+, ctl, DAT (Id-n°: 50961), 60 x 12
001050	A, B, AB, DVI+, ctl, DAT (Id-n°: 50961), 112 x 12

### DiaClon ABO/Rh for Newborns DVI-

001027	A, B, AB, DVI-, ctl, DAT (Id-n°: 50071), 4 x 12
001030	A, B, AB, DVI-, ctl, DAT (Id-n°: 50071), 24 x 12
001028	A, B, AB, DVI-, ctl, DAT (Id-n°: 50071), 60 x 12
001029	A, B, AB, DVI-, ctl, DAT (Id-n°: 50071), 112 x 12

### DiaClon ABO/DVI- for Patients

001294	A, B, AB, DVI-, DVI-, ctl (Id-n°: 52040), 4 x 12
001297	A, B, AB, DVI-, DVI-, ctl (Id-n°: 52040), 24 x 12
001296	A, B, AB, DVI-, DVI-, ctl (Id-n°: 52040), 60 x 12

### DiaClon ABO/DVI-

001424	A, B, AB, DVI-, DVI-, ctl (Id-n°: 52050), 4 x 12
001427	A, B, AB, DVI-, DVI-, ctl (Id-n°: 52050), 24 x 12
001425	A, B, AB, DVI-, DVI-, ctl (Id-n°: 52050), 112 x 12

### ID-Diluent 2

009260	Modified LISS for red cell suspensions (Id-n°: 05761), 2 x 100 ml
009280	Modified LISS for red cell suspensions (Id-n°: 05761), 1 x 500 ml





# Blood Grouping ABD Confirmation

# Human Antibodies

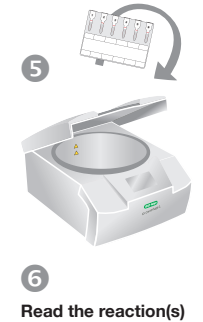
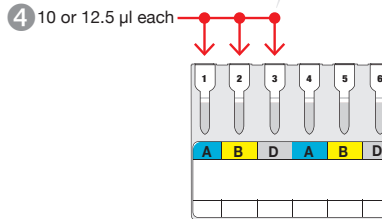
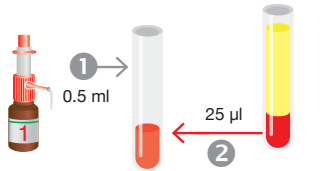
## Preparing the Sample Suspension

## Incubation

## Pipetting (2 tests per ID-Card)

## Centrifugation

ID-Diluent 1      Packed cells



## Product Pictures



**ABD-Confirmation**  
(Id-n°: 50041)



**ID-Diluent 1**  
(Id-n°: 05751)  
100 ml/500 ml

### Ordering Information

Catalog # Description

#### ABD-Confirmation

001114	A, B, D/A, B, D (Id-n°: 50041), 4 x 12
001117	A, B, D/A, B, D (Id-n°: 50041), 24 x 12
001116	A, B, D/A, B, D (Id-n°: 50041), 60 x 12
001115	A, B, D/A, B, D (Id-n°: 50041), 112 x 12

#### ID-Diluent 1

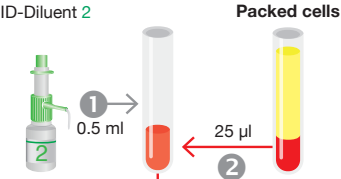
009160	Modified Bromelin solution for red cell suspensions and enzyme tests (Id-n°: 05751), 2 x 100 ml
009180	Modified Bromelin solution for red cell suspensions and enzyme tests (Id-n°: 05751), 1 x 500 ml



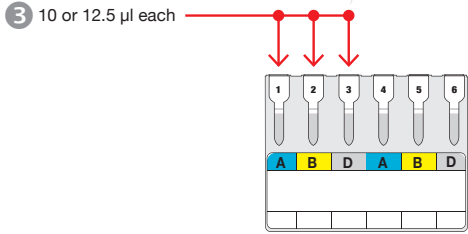
# Blood Grouping ABD Confirmation

# Monoclonal Antibodies

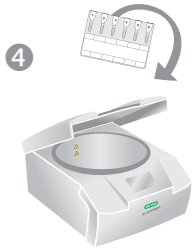
## Preparing the Sample Suspension



## Pipetting (2 tests per ID-Card)



## Centrifugation



5 Read the reaction(s)

## Product Pictures



**DiaClon ABD-Confirmation for Patients**  
(Id-n°: 50053)



**DiaClon ABD-Confirmation for Donors**  
(Id-n°: 51051)



**ID-Diluent 2**  
(Id-n°: 05761)  
100 ml/500 ml

## Ordering Information

Catalog # Description

### DiaClon ABD-Confirmation for Patients

001254	A, B, DVI-, A, B, DVI-	(Id-n°: 50053), 4 x 12
001257	A, B, DVI-, A, B, DVI-	(Id-n°: 50053), 24 x 12
001256	A, B, DVI-, A, B, DVI-	(Id-n°: 50053), 60 x 12
001255	A, B, DVI-, A, B, DVI-	(Id-n°: 50053), 112 x 12

### DiaClon ABD-Confirmation for Donors

001134	A, B, DVI+/A, B, DVI+	(Id-n°: 51051), 4 x 12
001133	A, B, DVI+/A, B, DVI+	(Id-n°: 51051), 24 x 12
001136	A, B, DVI+/A, B, DVI+	(Id-n°: 51051), 60 x 12
001135	A, B, DVI+/A, B, DVI+	(Id-n°: 51051), 112 x 12

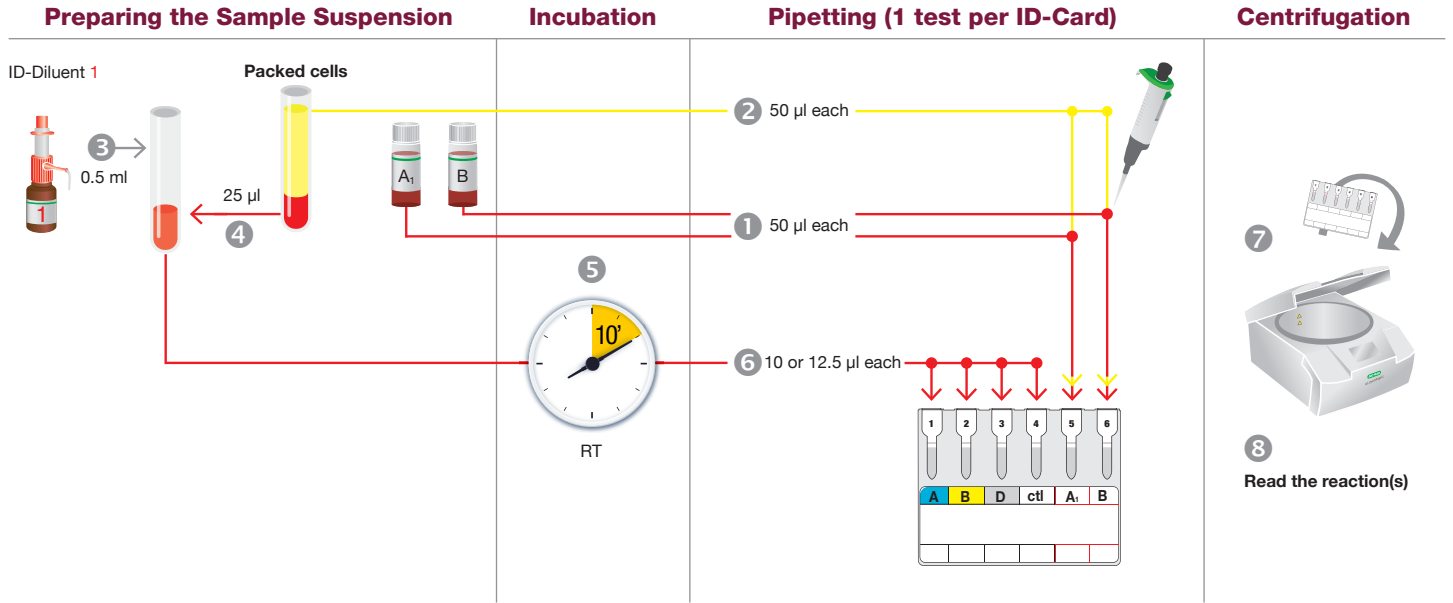
### ID-Diluent 2

009260	Modified LISS for red cell suspensions	(Id-n°: 05761), 2 x 100 ml
009280	Modified LISS for red cell suspensions	(Id-n°: 05761), 1 x 500 ml

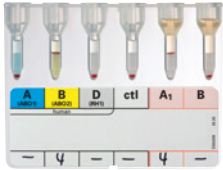
Visit [www.bio-rad.com/immunohematology](http://www.bio-rad.com/immunohematology) for more information ■ *This Quick Guide does not replace the corresponding box-insert!*

© Bio-Rad Laboratories, Inc.

# Blood Grouping ABO and RhD Combined with Reverse Grouping Human Antibodies



## Product Pictures



**ABO/D + Reverse Grouping**  
(Id-n°: 50081)



**ID-DiaCell ABO**  
(Id-n°: 45092)



**ID-Diluent 1**  
(Id-n°: 05751)  
100 ml/500 ml

## Ordering Information

Catalog # Description

### ABO/D + Reverse Grouping

001127 A, B, D, cti/A<sub>1</sub>, B (Id-n°: 50081) human, 4 x 12  
001131 A, B, D, cti/A<sub>1</sub>, B (Id-n°: 50081) human, 24 x 12  
001128 A, B, D, cti/A<sub>1</sub>, B (Id-n°: 50081) human, 60 x 12  
001129 A, B, D, cti/A<sub>1</sub>, B (Id-n°: 50081) human, 112 x 12

### ID-DiaCell ABO

003624 Set of 2 vials A<sub>1</sub>, B (Id-n°: 45092), 2 x 10 ml

### ID-Diluent 1

009160 Modified Bromelin solution for red cell suspensions and enzyme tests (Id-n°: 05751), 2 x 100 ml  
009180 Modified Bromelin solution for red cell suspensions and enzyme tests (Id-n°: 05751), 1 x 500 ml

# Blood Grouping ABO and RhD Combined with Reverse Grouping Monoclonal Antibodies

## Preparing the Sample Suspension

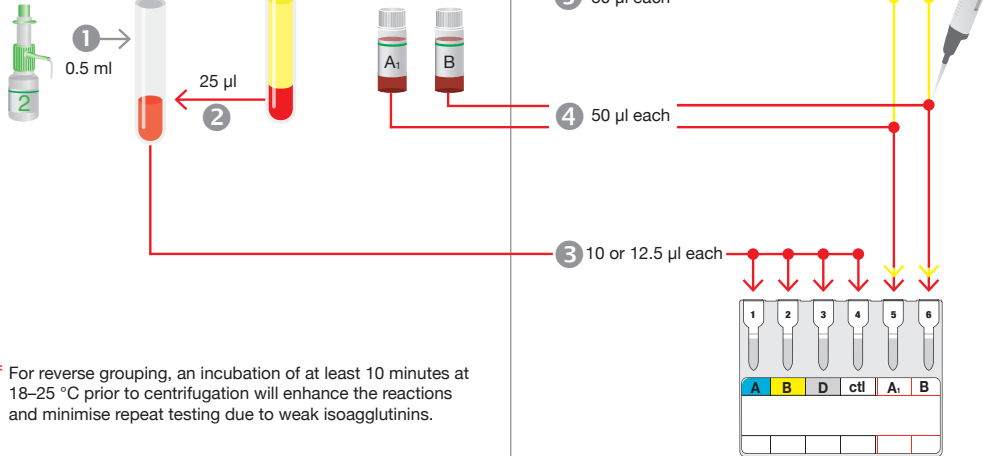
## Pipetting (1 test per ID-Card)

## Incubation

## Centrifugation

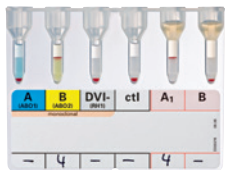
ID-Diluent 2

Packed cells



\* For reverse grouping, an incubation of at least 10 minutes at 18–25 °C prior to centrifugation will enhance the reactions and minimise repeat testing due to weak isoagglutinins.

## Product Pictures



**DiaClon ABO/D + Reverse Grouping**  
(Id-n°: 50092)



**DiaClon ABO/D + Reverse Grouping for Donors**  
(Id-n°: 51090)



**DiaClon ABO/D + Reverse Grouping**  
(Id-n°: 50742)



**DiaClon ABO/D (DVI+, DVI-) + Reverse Grouping**  
(Id-n°: 50981)



**ID-DiaCell ABO**  
(Id-n°: 45092)



**ID-Diluent 2**  
(Id-n°: 05761)  
100 ml/500 ml

## Ordering Information

Catalog # Description

### DiaClon ABO/D + Reverse Grouping

001234 A, B, DVI-, cti/A<sub>1</sub>, B (Id-n°: 50092), 4 x 12  
001237 A, B, DVI-, cti/A<sub>1</sub>, B (Id-n°: 50092), 24 x 12  
001236 A, B, DVI-, cti/A<sub>1</sub>, B (Id-n°: 50092), 60 x 12  
001235 A, B, DVI-, cti/A<sub>1</sub>, B (Id-n°: 50092), 112 x 12

### DiaClon ABO/D + Reverse Grouping for Donors

001365 A, B, DVI+, cti/A<sub>1</sub>, B (Id-n°: 51090), 112 x 12  
12010791 A, B, DVI+, cti/A<sub>1</sub>, B (Id-n°: 51090), 4 x 12

### DiaClon ABO/D + Reverse Grouping

001248 A, B, DVI-, DVI-, A<sub>1</sub>, B (Id-n°: 50742), 60 x 12  
001249 A, B, DVI-, DVI-, A<sub>1</sub>, B (Id-n°: 50742), 112 x 12

### DiaClon ABO/D (DVI+, DVI-) + Reverse Grouping

001386 A, B, DVI+, DVI-, A<sub>1</sub>, B (Id-n°: 50981), 60 x 12

### ID-DiaCell ABO

003624 Set of 2 vials A<sub>1</sub>, B (Id-n°: 45092), 2 x 10 ml

### ID-Diluent 2

009260 Modified LISS for red cell suspensions (Id-n°: 05761), 2 x 100 ml  
009280 Modified LISS for red cell suspensions (Id-n°: 05761), 1 x 500 ml

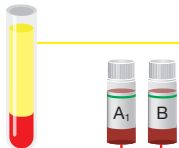


# Reverse Grouping

using ID-DiaCell ABO (A<sub>1</sub>-B)

## Preparing the Sample Suspension

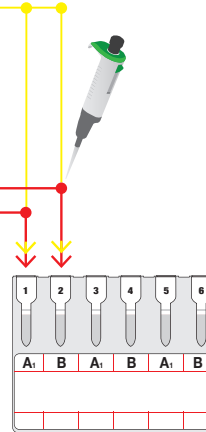
Packed cells



2 50 µl each

1 50 µl each

## Pipetting (3 tests per ID-Card)

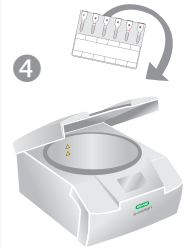


## Incubation

3 \*



## Centrifugation

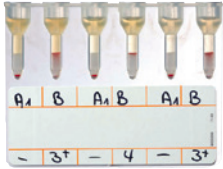


5

Read the reaction(s)

\* For reverse grouping, an incubation of at least 10 minutes at 18–25 °C prior to centrifugation will enhance the reactions and minimise repeat testing due to weak isoagglutinins.

## Product Pictures



**NaCl, Enzyme Test and Cold Agglutinins**  
(Id-n°: 50520)



**ID-DiaCell ABO**  
(Id-n°: 45092)

### Ordering Information

Catalog # Description

#### NaCl, Enzyme Test and Cold Agglutinins

005014	A <sub>1</sub> , A <sub>2</sub> , B/A <sub>1</sub> , A <sub>2</sub> , B or A <sub>1</sub> , B/A <sub>1</sub> , B/A <sub>1</sub> , B or IP, IIP, IIIP or IP, IIP, AC (Id-n°: 50520), 4 x 12
005017	A <sub>1</sub> , A <sub>2</sub> , B/A <sub>1</sub> , A <sub>2</sub> , B or A <sub>1</sub> , B/A <sub>1</sub> , B/A <sub>1</sub> , B or IP, IIP, IIIP or IP, IIP, AC (Id-n°: 50520), 24 x 12
005016	A <sub>1</sub> , A <sub>2</sub> , B/A <sub>1</sub> , A <sub>2</sub> , B or A <sub>1</sub> , B/A <sub>1</sub> , B/A <sub>1</sub> , B or IP, IIP, IIIP or IP, IIP, AC (Id-n°: 50520), 60 x 12
005015	A <sub>1</sub> , A <sub>2</sub> , B/A <sub>1</sub> , A <sub>2</sub> , B or A <sub>1</sub> , B/A <sub>1</sub> , B/A <sub>1</sub> , B or IP, IIP, IIIP or IP, IIP, AC (Id-n°: 50520), 112 x 12

#### ID-DiaCell ABO

003624	Set of 2 vials A <sub>1</sub> , B (Id-n°: 45092), 2 x 10 ml
--------	-------------------------------------------------------------

Visit [www.bio-rad.com/immunohematology](http://www.bio-rad.com/immunohematology) for more information ■ *This Quick Guide does not replace the corresponding box-insert!*

© Bio-Rad Laboratories, Inc.

# Reverse Grouping

using ID-DiaCell ABO (A<sub>1</sub>-A<sub>2</sub>-B/A<sub>1</sub>-B-O)

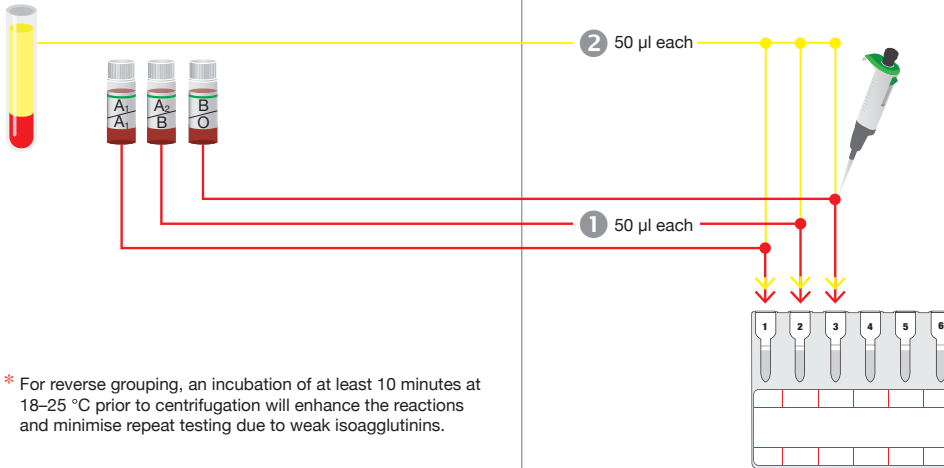
## Preparing the Sample Suspension

## Pipetting (2 tests per ID-Card)

## Incubation

## Centrifugation

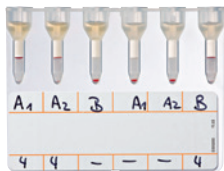
Packed cells



\* For reverse grouping, an incubation of at least 10 minutes at 18–25 °C prior to centrifugation will enhance the reactions and minimise repeat testing due to weak isoagglutinins.



## Product Pictures



**NaCl, Enzyme Test and Cold Agglutinins**  
(Id-n°: 50520)



**ID-DiaCell ABO**  
(Id-n°: 45082)



**ID-DiaCell ABO**  
(Id-n°: 45352)

### Ordering Information

Catalog # Description

#### NaCl, Enzyme Test and Cold Agglutinins

005014	A <sub>1</sub> , A <sub>2</sub> , B/A <sub>1</sub> , A <sub>2</sub> , B or A <sub>1</sub> , B/A <sub>1</sub> , B/A <sub>1</sub> , B or IP, IIP, IIIP or IP, IIP, AC (Id-n°: 50520), 4 x 12
005017	A <sub>1</sub> , A <sub>2</sub> , B/A <sub>1</sub> , A <sub>2</sub> , B or A <sub>1</sub> , B/A <sub>1</sub> , B/A <sub>1</sub> , B or IP, IIP, IIIP or IP, IIP, AC (Id-n°: 50520), 24 x 12
005016	A <sub>1</sub> , A <sub>2</sub> , B/A <sub>1</sub> , A <sub>2</sub> , B or A <sub>1</sub> , B/A <sub>1</sub> , B/A <sub>1</sub> , B or IP, IIP, IIIP or IP, IIP, AC (Id-n°: 50520), 60 x 12
005015	A <sub>1</sub> , A <sub>2</sub> , B/A <sub>1</sub> , A <sub>2</sub> , B or A <sub>1</sub> , B/A <sub>1</sub> , B/A <sub>1</sub> , B or IP, IIP, IIIP or IP, IIP, AC (Id-n°: 50520), 112 x 12

#### ID-DiaCell ABO

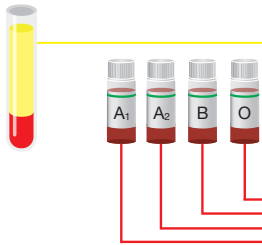
003617	Set of 3 vials A <sub>1</sub> , A <sub>2</sub> , B (Id-n°: 45082), 3 x 10 ml
003615	Set of 3 vials A <sub>1</sub> , B, O (Id-n°: 45352), 3 x 10 ml

# Reverse Grouping

using ID-DiaCell ABO (A<sub>1</sub>-A<sub>2</sub>-B-O)

## Preparing the Sample Suspension

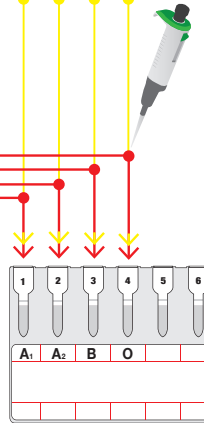
Packed cells



2 50 µl each

1 50 µl each

## Pipetting



## Incubation

3 \*



## Centrifugation



\* For reverse grouping, an incubation of at least 10 minutes at 18–25 °C prior to centrifugation will enhance the reactions and minimise repeat testing due to weak isoagglutinins.

## Product Pictures



**NaCl, Enzyme and Cold Agglutinins**  
(Id-n°: 50520)



**ID-DiaCell ABO**  
(Id-n°: 45022)

### Ordering Information

Catalog # Description

#### NaCl, Enzyme Test and Cold Agglutinins

005014	A <sub>1</sub> , A <sub>2</sub> , B/A <sub>1</sub> , A <sub>2</sub> , B or A <sub>1</sub> , B/A <sub>1</sub> , B/A <sub>1</sub> , B or IP, IIP, IIIP or IP, IIP, AC (Id-n°: 50520), 4 x 12
005017	A <sub>1</sub> , A <sub>2</sub> , B/A <sub>1</sub> , A <sub>2</sub> , B or A <sub>1</sub> , B/A <sub>1</sub> , B/A <sub>1</sub> , B or IP, IIP, IIIP or IP, IIP, AC (Id-n°: 50520), 24 x 12
005016	A <sub>1</sub> , A <sub>2</sub> , B/A <sub>1</sub> , A <sub>2</sub> , B or A <sub>1</sub> , B/A <sub>1</sub> , B/A <sub>1</sub> , B or IP, IIP, IIIP or IP, IIP, AC (Id-n°: 50520), 60 x 12
005015	A <sub>1</sub> , A <sub>2</sub> , B/A <sub>1</sub> , A <sub>2</sub> , B or A <sub>1</sub> , B/A <sub>1</sub> , B/A <sub>1</sub> , B or IP, IIP, IIIP or IP, IIP, AC (Id-n°: 50520), 112 x 12

#### ID-DiaCell ABO

003619 Set of 4 vials A<sub>1</sub>, A<sub>2</sub>, B, O (Id-n°: 45022), 4 x 10 ml



# Phenotyping Rh/K

**2/01 and 2/02** Phenotyping Rh/K

Human Antibodies

---

**2/03 and 2/04** Phenotyping Rh/K

Monoclonal Antibodies

---



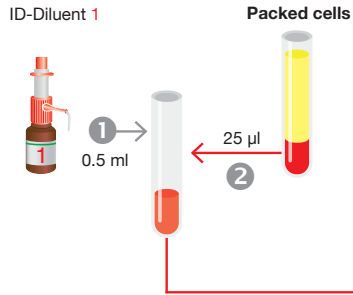




# Phenotyping Rh/K

# Human Antibodies

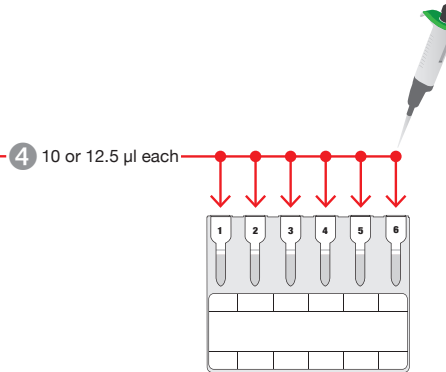
## Preparing the Sample Suspension



## Incubation



## Pipetting (1 test per ID-Card)



## Centrifugation



## Product Pictures



**RhD + Phenotype**  
(Id-n°: 50130)



**ID-Diluent 1**  
(Id-n°: 05751)  
100 ml/500 ml

### Ordering Information

Catalog # Description

#### RhD + Phenotype

002024	C, c, D, E, e, ctl (Id-n°: 50130) human, 4 x 12
002027	C, c, D, E, e, ctl (Id-n°: 50130) human, 24 x 12
002026	C, c, D, E, e, ctl (Id-n°: 50130) human, 60 x 12
002025	C, c, D, E, e, ctl (Id-n°: 50130) human, 112 x 12

#### ID-Diluent 1

009160	<b>Modified Bromelin solution for red cell suspensions and enzyme tests</b> (Id-n°: 05751), 2 x 100 ml
009180	<b>Modified Bromelin solution for red cell suspensions and enzyme tests</b> (Id-n°: 05751), 1 x 500 ml

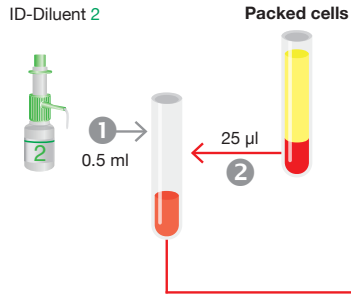
Visit [www.bio-rad.com/immunohematology](http://www.bio-rad.com/immunohematology) for more information ■ *This Quick Guide does not replace the corresponding box-insert!*

© Bio-Rad Laboratories, Inc.

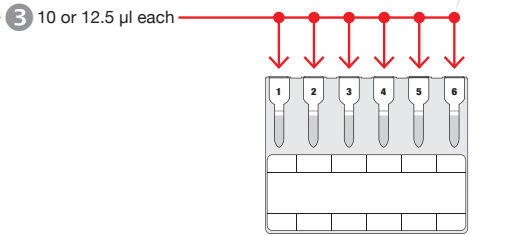
# Phenotyping Rh/K

# Monoclonal Antibodies

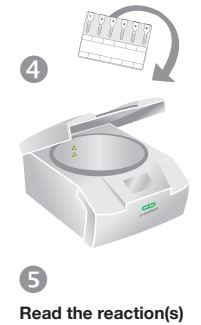
## Preparing the Sample Suspension



## Pipetting (1 test per ID-Card)



## Centrifugation



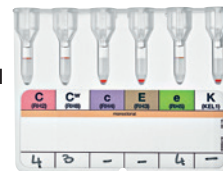
## Product Pictures



**DiaClon Rh-Subgroups + K**  
(Id-n°: 50110)



**DiaClon Rh + K Pheno II**  
(Id-n°: 50710)



**DiaClon Rh-Subgroups + C<sup>w</sup> + K**  
(Id-n°: 52000)



**Control Card A**  
(Id-n°: 52020)



**ID-Diluent 2**  
(Id-n°: 05761)  
100 ml/500 ml

The ID-Card Control Card A is designed to validate the reactions obtained with the ID-Cards DiaClon Anti-C<sup>w</sup> and DiaClon Rh-Subgroups + C<sup>w</sup> + K.

## Ordering Information

Catalog # Description

### DiaClon Rh-Subgroups + K

002124	<b>C, c, E, e, K, ctl</b> (Id-n°: 50110), 4 x 12
002127	<b>C, c, E, e, K, ctl</b> (Id-n°: 50110), 24 x 12
002126	<b>C, c, E, e, K, ctl</b> (Id-n°: 50110), 60 x 12
002125	<b>C, c, E, e, K, ctl</b> (Id-n°: 50110), 112 x 12

### DiaClon Rh-Subgroups + C<sup>w</sup> + K

002134	<b>C, C<sup>w</sup>, c, E, e, K</b> (Id-n°: 52000), 4 x 12
002137	<b>C, C<sup>w</sup>, c, E, e, K</b> (Id-n°: 52000), 24 x 12
002136	<b>C, C<sup>w</sup>, c, E, e, K</b> (Id-n°: 52000), 60 x 12
002135	<b>C, C<sup>w</sup>, c, E, e, K</b> (Id-n°: 52000), 112 x 12

### ID-Diluent 2

009260	<b>Modified LISS for red cell suspensions</b> (Id-n°: 05761), 2 x 100 ml
009280	<b>Modified LISS for red cell suspensions</b> (Id-n°: 05761), 1 x 500 ml

### DiaClon Rh + K Pheno II

002224	<b>C, c, E, e, K, ctl</b> (Id-n°: 50710), 4 x 12
002227	<b>C, c, E, e, K, ctl</b> (Id-n°: 50710), 24 x 12
002226	<b>C, c, E, e, K, ctl</b> (Id-n°: 50710), 60 x 12
002225	<b>C, c, E, e, K, ctl</b> (Id-n°: 50710), 112 x 12

### Control Card A

001711	<b>6 x ctl</b> (Id-n°: 52020), 1 x 12
001714	<b>6 x ctl</b> (Id-n°: 52020), 4 x 12

Visit [www.bio-rad.com/immunohematology](http://www.bio-rad.com/immunohematology) for more information ■ This Quick Guide does not replace the corresponding box-insert!

© Bio-Rad Laboratories, Inc.

# Typing of Partial RhD

**3/01 and 3/02** Verification of Weak D by IAT

ID-DiaClon Anti-D

---

**3/03 and 3/04** Typing of Partial RhD

ID-Partial RhD Typing Set

---

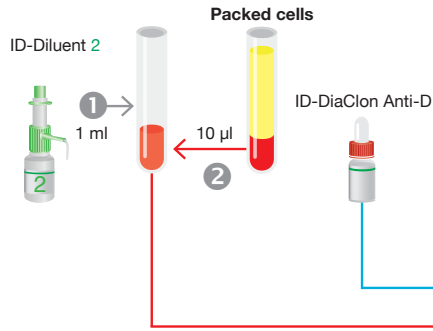




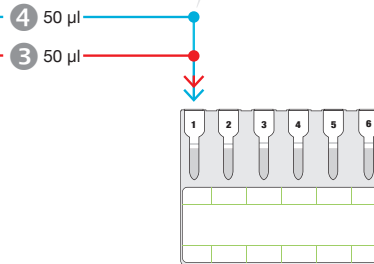
# Verification of Weak D by IAT

using ID-DiaClon Anti-D

## Preparing the Sample Suspension



## Pipetting (6 tests per ID-Card)



## Incubation



## Centrifugation



## Product Pictures



**LISS/Coombs**  
(Id-n°: 50531)



**Coombs Anti-IgG**  
(Id-n°: 50540)



**ID-DiaClon Anti-D**  
(Id-n°: 09410)



**ID-Diluent 2**  
(Id-n°: 05761)  
100 ml/500 ml

## Ordering Information

Catalog # Description

### LISS/Coombs

004014	<b>6 x AHG (Anti-IgG + C3d) tests</b> (Id-n°: 50531) rabbit, 4 x 12
004017	<b>6 x AHG (Anti-IgG + C3d) tests</b> (Id-n°: 50531) rabbit, 24 x 12
004016	<b>6 x AHG (Anti-IgG + C3d) tests</b> (Id-n°: 50531) rabbit, 60 x 12
004015	<b>6 x AHG (Anti-IgG + C3d) tests</b> (Id-n°: 50531) rabbit, 112 x 12

### Coombs Anti-IgG

004024	<b>6 x AHG (Anti-IgG)</b> (Id-n°: 50540) rabbit, 4 x 12
004027	<b>6 x AHG (Anti-IgG)</b> (Id-n°: 50540) rabbit, 24 x 12
004026	<b>6 x AHG (Anti-IgG)</b> (Id-n°: 50540) rabbit, 60 x 12
004025	<b>6 x AHG (Anti-IgG)</b> (Id-n°: 50540) rabbit, 112 x 12

### ID-DiaClon Anti-D

007531	(Id-n°: 09410) ESD1, 1 x 5 ml
--------	-------------------------------

### ID-Diluent 2

009260	<b>Modified LISS for red cell suspensions</b> (Id-n°: 05761), 2 x 100 ml
009280	<b>Modified LISS for red cell suspensions</b> (Id-n°: 05761), 1 x 500 ml

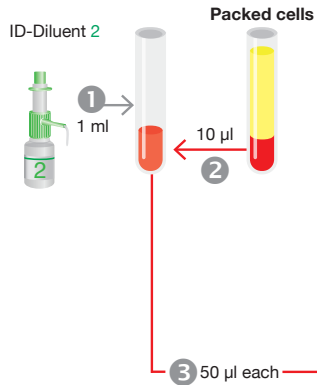




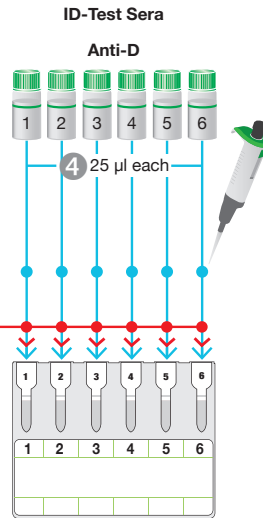
# Typing of Partial RhD

using ID-Partial RhD Typing Set

## Preparing the Sample Suspension



## Pipetting



## Incubation



## Centrifugation



## Product Pictures



**ID-Partial RhD Typing Set**  
(Id-n°: 46170)



**ID-Diluent 2**  
(Id-n°: 05761)  
100 ml/500 ml

### Ordering Information

Catalog # Description

**ID-Partial RhD Typing Set**

001451 **Test Kit ID-Partial RhD Typing Set** (Id-n°: 46170)  
ID-Cards, 1 x 12  
ID-Anti-D 1-6, 6 x 0.4 ml

**ID-Diluent 2**

009260 **Modified LISS for red cell suspensions** (Id-n°: 05761), 2 x 100 ml  
009280 **Modified LISS for red cell suspensions** (Id-n°: 05761), 1 x 500 ml

# Antibody Screening

<b>4/01 and 4/02</b>	Antibody Screening	ID-DiaCell I-II
<b>4/03 and 4/04</b>	Antibody Screening	ID-DiaCell I-II-III
<b>4/05 and 4/06</b>	Antibody Screening	ID-DiaCell I-II-III Asia (Mi <sup>a+</sup> )
<b>4/07 and 4/08</b>	Antibody Screening	ID-DiaCell I-II and ID-Di <sup>a</sup> (Diego) Positive
<b>4/09 and 4/10</b>	Antibody Screening	ID-DiaCell IP-IIP-III <sup>P</sup>
<b>4/11 and 4/12</b>	Antibody Screening	ID-DiaCell I-II-III and ID-DiaCell IP-IIP-III <sup>P</sup>
<b>4/13 and 4/14</b>	Antibody Screening	ID-DiaScreen
<b>4/15 and 4/16</b>	Antibody Screening	ID-DiaCell Pool
<b>4/17 and 4/18</b>	Antibody Screening	ID-DiaScreen Prophylax
<b>4/19 and 4/20</b>	Cold Antibody Screening and Cold Agglutinins	ID-DiaCell I-II-III and autocontrol





# Antibody Screening (IAT)

using ID-DiaCell I-II

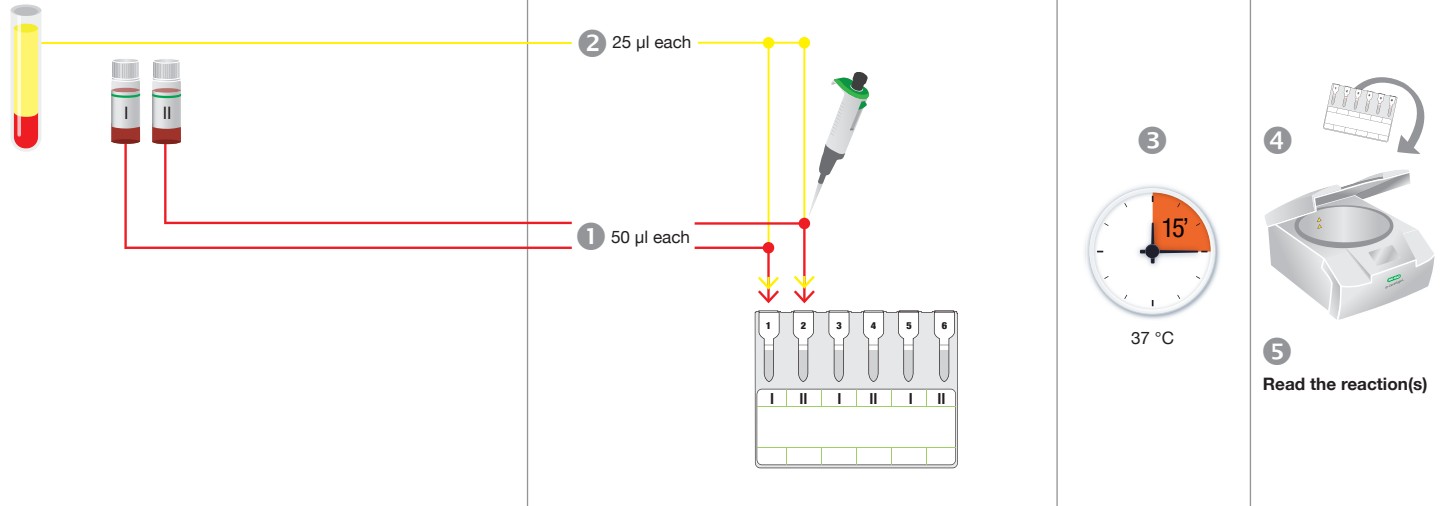
## Preparing the Sample Suspension

## Pipetting (3 tests per ID-Card)

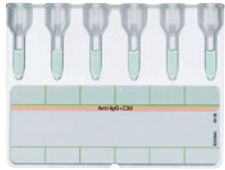
## Incubation

## Centrifugation

Packed cells



## Product Pictures



**LISS/Coombs**  
(Id-n°: 50531)



**Coombs Anti-IgG**  
(Id-n°: 50540)



**ID-DiaCell I-II**  
(Id-n°: 45151)

### Ordering Information

Catalog # Description

#### LISS/Coombs

- 004014 6 x AHG (Anti-IgG + C3d) tests (Id-n°: 50531) rabbit, 4 x 12
- 004017 6 x AHG (Anti-IgG + C3d) tests (Id-n°: 50531) rabbit, 24 x 12
- 004016 6 x AHG (Anti-IgG + C3d) tests (Id-n°: 50531) rabbit, 60 x 12
- 004015 6 x AHG (Anti-IgG + C3d) tests (Id-n°: 50531) rabbit, 112 x 12

#### Coombs Anti-IgG

- 004024 6 x AHG (Anti-IgG) tests (Id-n°: 50540) rabbit, 4 x 12
- 004027 6 x AHG (Anti-IgG) tests (Id-n°: 50540) rabbit, 24 x 12
- 004026 6 x AHG (Anti-IgG) tests (Id-n°: 50540) rabbit, 60 x 12
- 004025 6 x AHG (Anti-IgG) tests (Id-n°: 50540) rabbit, 112 x 12

#### ID-DiaCell I-II

- 003613 Set of 2 vials for IAT and NaCl test R<sub>1</sub>R<sub>1</sub>, R<sub>2</sub>R<sub>2</sub> (Id-n°: 45151), 2 x 10 ml

Visit [www.bio-rad.com/immunohematology](http://www.bio-rad.com/immunohematology) for more information ■ *This Quick Guide does not replace the corresponding box-insert!*

© Bio-Rad Laboratories, Inc.

# Antibody Screening

using ID-DiaCell I-II-III

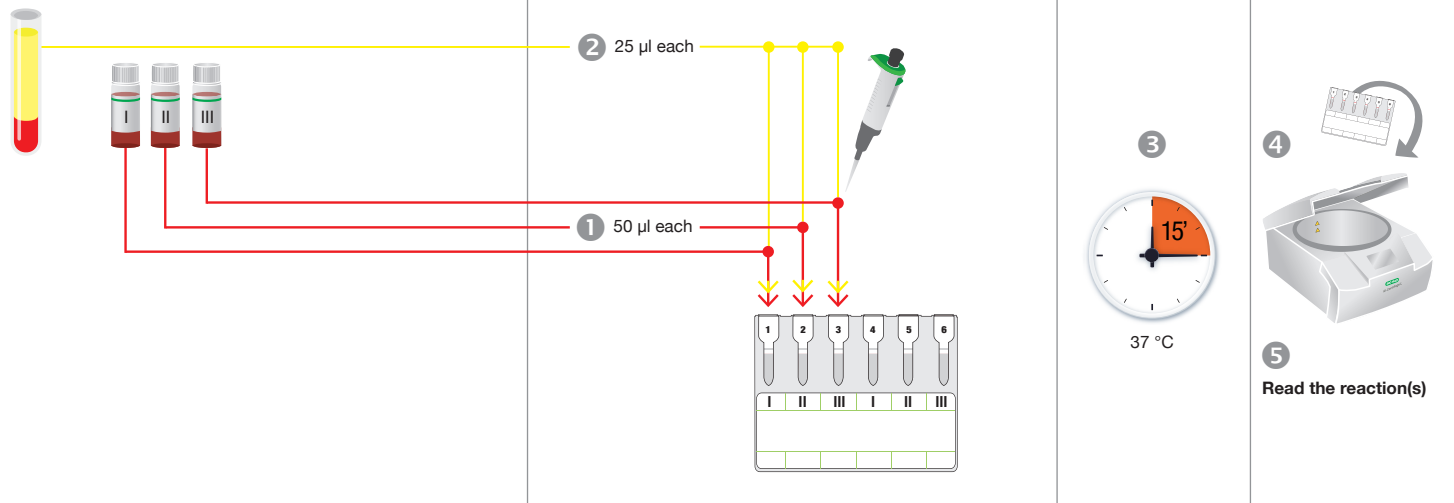
## Preparing the Sample Suspension

## Pipetting (2 tests per ID-Card)

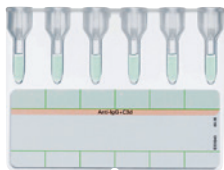
## Incubation

## Centrifugation

Packed cells



## Product Pictures



**LISS/Coombs**  
(Id-n°: 50531)



**Coombs Anti-IgG**  
(Id-n°: 50540)



**ID-DiaCell I-II-III**  
(Id-n°: 45184)

## Ordering Information

Catalog # Description

### LISS/Coombs

004014 **6 x AHG (Anti-IgG + C3d) tests** (Id-n°: 50531) rabbit, 4 x 12  
004017 **6 x AHG (Anti-IgG + C3d) tests** (Id-n°: 50531) rabbit, 24 x 12  
004016 **6 x AHG (Anti-IgG + C3d) tests** (Id-n°: 50531) rabbit, 60 x 12  
004015 **6 x AHG (Anti-IgG + C3d) tests** (Id-n°: 50531) rabbit, 112 x 12

### Coombs Anti-IgG

004024 **6 x AHG (Anti-IgG) tests** (Id-n°: 50540) rabbit, 4 x 12  
004027 **6 x AHG (Anti-IgG) tests** (Id-n°: 50540) rabbit, 24 x 12  
004026 **6 x AHG (Anti-IgG) tests** (Id-n°: 50540) rabbit, 60 x 12  
004025 **6 x AHG (Anti-IgG) tests** (Id-n°: 50540) rabbit, 112 x 12

### ID-DiaCell I-II-III

004310 **Set of 3 vials for IAT and NaCl test R<sub>1</sub>R<sub>1</sub>, R<sub>2</sub>R<sub>2</sub>, rr** (Id-n°: 45184), 3 x 10 ml





# Antibody Screening

using ID-DiaCell I-II-III Asia (Mi<sup>a+</sup>)

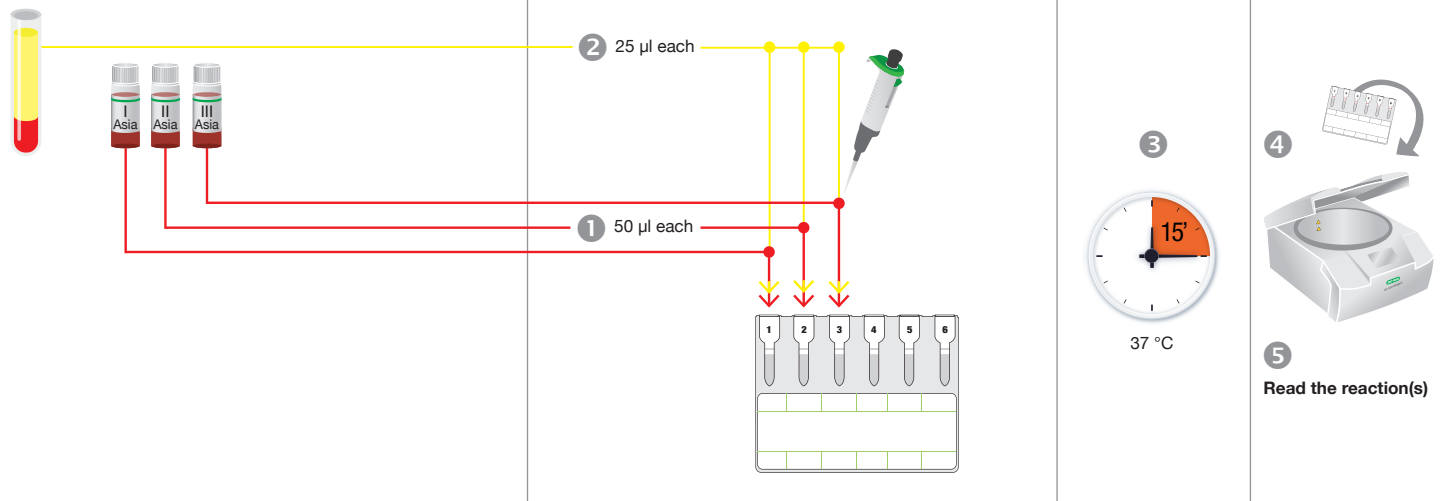
## Preparing the Sample Suspension

## Pipetting (2 tests per ID-Card)

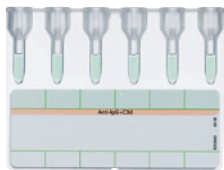
## Incubation

## Centrifugation

Packed cells



## Product Pictures



**LISS/Coombs**  
(Id-n°: 50531)



**Coombs Anti-IgG**  
(Id-n°: 50540)



**ID-DiaCell I-II-III Asia  
(Mi<sup>a+</sup>)**  
(Id-n°: 45330)

### Ordering Information

Catalog # Description

#### LISS/Coombs

- 004014 **6 x AHG (Anti-IgG + C3d) tests** (Id-n°: 50531) rabbit, 4 x 12
- 004017 **6 x AHG (Anti-IgG + C3d) tests** (Id-n°: 50531) rabbit, 24 x 12
- 004016 **6 x AHG (Anti-IgG + C3d) tests** (Id-n°: 50531) rabbit, 60 x 12
- 004015 **6 x AHG (Anti-IgG + C3d) tests** (Id-n°: 50531) rabbit, 112 x 12

#### Coombs Anti-IgG

- 004024 **6 x AHG (Anti-IgG) tests** (Id-n°: 50540) rabbit, 4 x 12
- 004027 **6 x AHG (Anti-IgG) tests** (Id-n°: 50540) rabbit, 24 x 12
- 004026 **6 x AHG (Anti-IgG) tests** (Id-n°: 50540) rabbit, 60 x 12
- 004025 **6 x AHG (Anti-IgG) tests** (Id-n°: 50540) rabbit, 112 x 12

#### ID-DiaCell I-II-III Asia (Mi<sup>a+</sup>)

- 003614 **Set of 3 vials for IAT and NaCl test R<sub>1</sub>R<sub>1</sub>, R<sub>2</sub>R<sub>2</sub>, Mi<sup>a+</sup>** (Id-n°: 45330), 3 x 10 ml



# Antibody Screening

using ID-DiaCell I-II and ID-Di<sup>a</sup> (Diego) Positive

## Preparing the Sample Suspension

## Pipetting (2 tests per ID-Card)

## Incubation

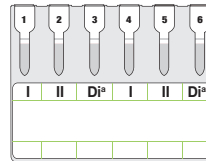
## Centrifugation

Packed cells

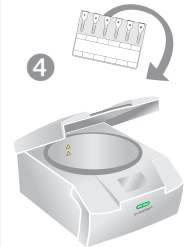


2 25 µl each

1 50 µl each

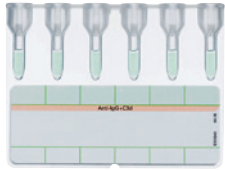


NB: ID-Di<sup>a</sup> (Diego) Positive can be combined with other screening kits (e.g. ID-DiaCell I-II-III).



5 Read the reaction(s)

## Product Pictures



**LISS/Coombs**  
(Id-n°: 50531)



**Coombs Anti-IgG**  
(Id-n°: 50540)



**ID-DiaCell I-II**  
(Id-n°: 45151)



**ID-Di<sup>a</sup> (Diego) Positive**  
(Id-n°: 05980)

## Ordering Information

Catalog # Description

### LISS/Coombs

- 004014 **6 x AHG (Anti-IgG + C3d) tests** (Id-n°: 50531) rabbit, 4 x 12
- 004017 **6 x AHG (Anti-IgG + C3d) tests** (Id-n°: 50531) rabbit, 24 x 12
- 004016 **6 x AHG (Anti-IgG + C3d) tests** (Id-n°: 50531) rabbit, 60 x 12
- 004015 **6 x AHG (Anti-IgG + C3d) tests** (Id-n°: 50531) rabbit, 112 x 12

### Coombs Anti-IgG

- 004024 **6 x AHG (Anti-IgG) tests** (Id-n°: 50540) rabbit, 4 x 12
- 004027 **6 x AHG (Anti-IgG) tests** (Id-n°: 50540) rabbit, 24 x 12
- 004026 **6 x AHG (Anti-IgG) tests** (Id-n°: 50540) rabbit, 60 x 12
- 004025 **6 x AHG (Anti-IgG) tests** (Id-n°: 50540) rabbit, 112 x 12

### ID-DiaCell I-II

- 003613 **Set of 2 vials for IAT and NaCl test R<sub>1</sub>R<sub>1</sub>, R<sub>2</sub>R<sub>2</sub>** (Id-n°: 45151), 2 x 10 ml

### ID-Di<sup>a</sup> (Diego) Positive

- 004134 **Single vial** (Id-n°: 05980), 1 x 10 ml

# Antibody Screening

using ID-DiaCell IP-IIP-IIIP

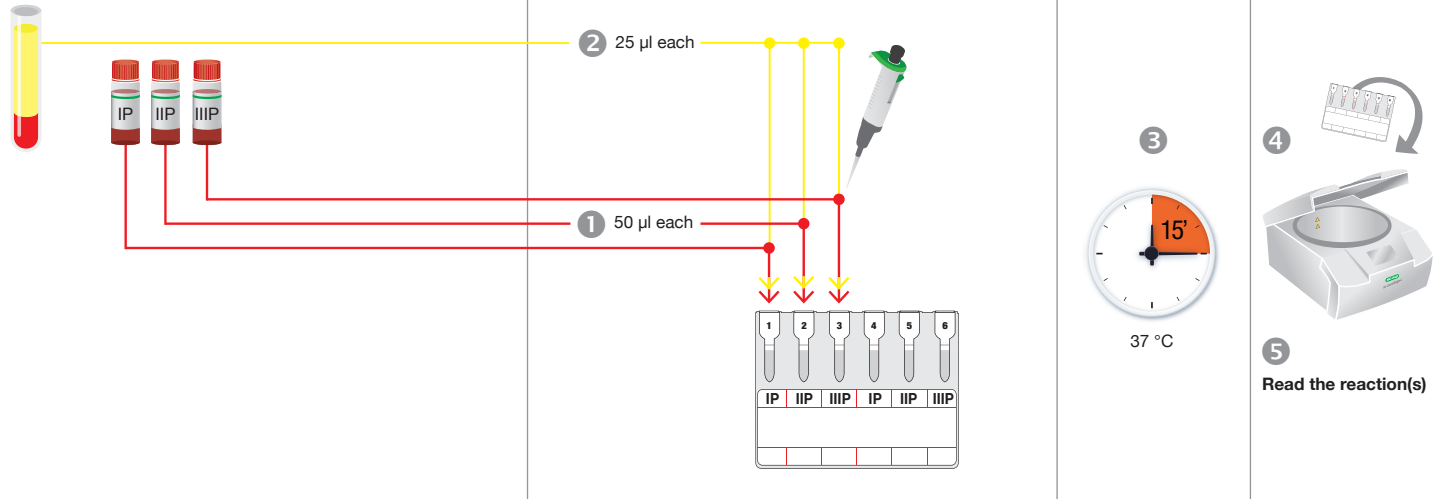
## Preparing the Sample Suspension

## Pipetting (2 tests per ID-Card)

## Incubation

## Centrifugation

Packed cells



## Product Pictures



**NaCl, Enzyme Test and Cold Agglutinins**  
(Id-n°: 50520)



**ID-DiaCell IP-IIP-IIIP**  
(Id-n°: 45194)

### Ordering Information

Catalog # Description

#### NaCl, Enzyme Test and Cold Agglutinins

005014	A <sub>1</sub> , A <sub>2</sub> , B/A <sub>1</sub> , A <sub>2</sub> , B or A <sub>1</sub> , B/A <sub>1</sub> , B/A <sub>1</sub> , B or IP, IIP, IIIP or IP, IIP, AC (Id-n°: 50520), 4 x 12
005017	A <sub>1</sub> , A <sub>2</sub> , B/A <sub>1</sub> , A <sub>2</sub> , B or A <sub>1</sub> , B/A <sub>1</sub> , B/A <sub>1</sub> , B or IP, IIP, IIIP or IP, IIP, AC (Id-n°: 50520), 24 x 12
005016	A <sub>1</sub> , A <sub>2</sub> , B/A <sub>1</sub> , A <sub>2</sub> , B or A <sub>1</sub> , B/A <sub>1</sub> , B/A <sub>1</sub> , B or IP, IIP, IIIP or IP, IIP, AC (Id-n°: 50520), 60 x 12
005015	A <sub>1</sub> , A <sub>2</sub> , B/A <sub>1</sub> , A <sub>2</sub> , B or A <sub>1</sub> , B/A <sub>1</sub> , B/A <sub>1</sub> , B or IP, IIP, IIIP or IP, IIP, AC (Id-n°: 50520), 112 x 12

#### ID-DiaCell IP-IIP-IIIP

005310	Set of 3 vials for enzyme test R <sub>1</sub> R <sub>2</sub> , R <sub>2</sub> R <sub>2</sub> , rr papainized (Id-n°: 45194), 3 x 10 ml
--------	-------------------------------------------------------------------------------------------------------------------------------------------

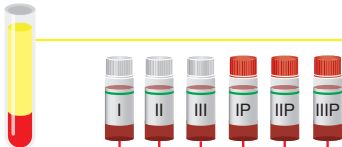


# Antibody Screening

using ID-DiaCell I-II-III and ID-DiaCell IP-IIP-IIIP

## Preparing the Sample Suspension

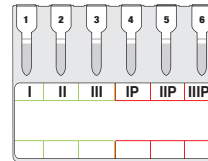
Packed cells



2 25  $\mu$ l each

1 50  $\mu$ l each

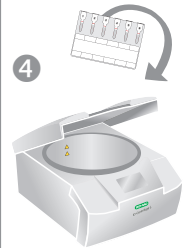
## Pipetting



## Incubation



## Centrifugation



5 Read the reaction(s)

## Product Pictures



**LISS/Coombs + Enzyme Test**  
(Id-n°: 50581)



**ID-DiaCell I-II-III**  
(Id-n°: 45184)



**ID-DiaCell IP-IIP-IIIP**  
(Id-n°: 45194)

## Ordering Information

Catalog # Description

### LISS/Coombs + Enzyme Test

004514	3 x AHG tests/3 x enzyme tests (Id-n°: 50581), 4 x 12
004517	3 x AHG tests/3 x enzyme tests (Id-n°: 50581), 24 x 12
004516	3 x AHG tests/3 x enzyme tests (Id-n°: 50581), 60 x 12
004515	3 x AHG tests/3 x enzyme tests (Id-n°: 50581), 112 x 12

### ID-DiaCell I-II-III

004310	Set of 3 vials for IAT and NaCl test R <sub>1</sub> R <sub>1</sub> , R <sub>2</sub> R <sub>2</sub> , rr (Id-n°: 45184), 3 x 10 ml
--------	-----------------------------------------------------------------------------------------------------------------------------------

### ID-DiaCell IP-IIP-IIIP

005310	Set of 3 vials for enzyme test R <sub>1</sub> R <sub>1</sub> , R <sub>2</sub> R <sub>2</sub> , rr papainized (Id-n°: 45194), 3 x 10 ml
--------	----------------------------------------------------------------------------------------------------------------------------------------



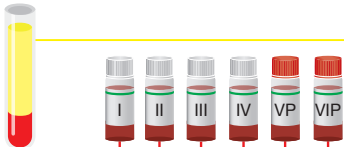


# Antibody Screening

using ID-DiaScreen

## Preparing the Sample Suspension

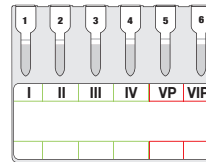
Packed cells



2 25  $\mu$ l each

1 50  $\mu$ l each

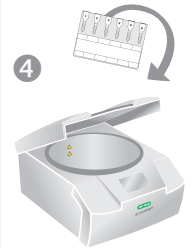
## Pipetting



## Incubation

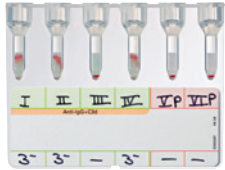


## Centrifugation



5 Read the reaction(s)

## Product Pictures



**DiaScreen**  
(Id-n°: 50571)



**ID-DiaScreen**  
(Id-n°: 45070)

### Ordering Information

Catalog # Description

#### DiaScreen

004704 4 x AHG tests/2 x enzyme tests (Id-n°: 50571), 4 x 12  
 004707 4 x AHG tests/2 x enzyme tests (Id-n°: 50571), 24 x 12  
 004706 4 x AHG tests/2 x enzyme tests (Id-n°: 50571), 60 x 12  
 004705 4 x AHG tests/2 x enzyme tests (Id-n°: 50571), 112 x 12

#### ID-DiaScreen

004316 Set of 6 vials for IAT and enzyme test I, II, III, IV, V, VI  
 $R_1^w R_1, R_2 R_2, rr, Kp^a/R_1^w R_1, R_2 R_2$  papainized (Id-n°: 45070), 6 x 10 ml  
 004311 Set of 4 vials for IAT, I, II, III, IV  $R_1^w R_1, R_2 R_2, rr, Kp^a$   
 (Id-n°: 45200), 4 x 10 ml  
 005311 Set of 2 vials for enzyme test V, VI  $R_1^w R_1, R_2 R_2$  papainized  
 (Id-n°: 45210), 2 x 10 ml



# Antibody Screening

using ID-DiaCell Pool

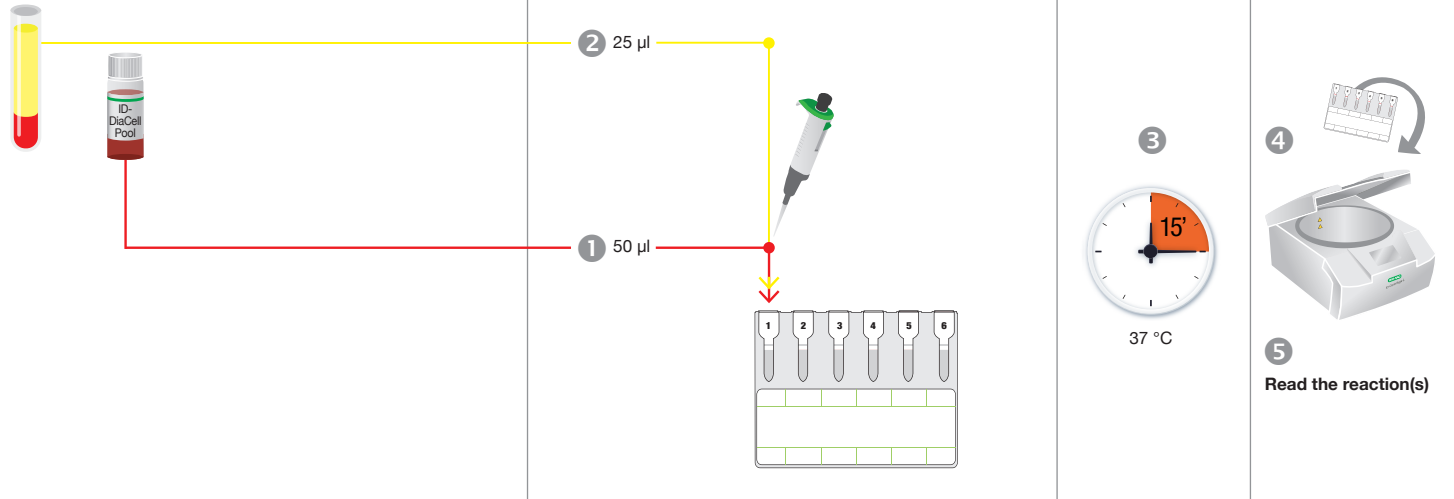
## Preparing the Sample Suspension

## Pipetting (6 tests per ID-Card)

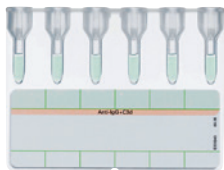
## Incubation

## Centrifugation

Packed cells



## Product Pictures



**LISS/Coombs**  
(Id-n°: 50531)



**Coombs Anti-IgG**  
(Id-n°: 50540)



**ID-DiaCell Pool**  
(Id-n°: 06070)

### Ordering Information

Catalog # Description

#### LISS/Coombs

- 004014 **6 x AHG (Anti-IgG + C3d) tests** (Id-n°: 50531) rabbit, 4 x 12
- 004017 **6 x AHG (Anti-IgG + C3d) tests** (Id-n°: 50531) rabbit, 24 x 12
- 004016 **6 x AHG (Anti-IgG + C3d) tests** (Id-n°: 50531) rabbit, 60 x 12
- 004015 **6 x AHG (Anti-IgG + C3d) tests** (Id-n°: 50531) rabbit, 112 x 12

#### Coombs Anti-IgG

- 004024 **6 x AHG (Anti-IgG)** (Id-n°: 50540) rabbit, 4 x 12
- 004027 **6 x AHG (Anti-IgG)** (Id-n°: 50540) rabbit, 24 x 12
- 004026 **6 x AHG (Anti-IgG)** (Id-n°: 50540) rabbit, 60 x 12
- 004025 **6 x AHG (Anti-IgG)** (Id-n°: 50540) rabbit, 112 x 12

#### ID-DiaCell Pool

- 003630 **2 pooled cells for IAT test R<sub>1</sub>R<sub>1</sub>, R<sub>2</sub>R<sub>2</sub>** (Id-n°: 50331), 1 x 10 ml
- 003631 **2 pooled cells for IAT test R<sub>1</sub>R<sub>1</sub>, R<sub>2</sub>R<sub>2</sub>** (Id-n°: 06070), 3 x 10 ml

# Antibody Screening

using ID-DiaScreen Prophylax

## Preparing the Sample Suspension

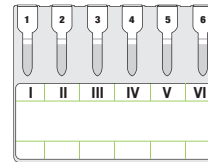
Packed cells



## Pipetting

2 25 µl each

1 50 µl each



## Incubation

3



37 °C

## Centrifugation

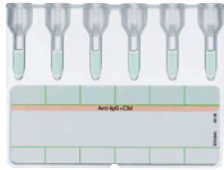
4



5

Read the reaction(s)

## Product Pictures



**LISS/Coombs**  
(Id-n°: 50531)



**Coombs Anti-IgG**  
(Id-n°: 50540)



**ID-DiaScreen  
Prophylax**  
(Id-n°: 45660)

### Ordering Information

Catalog # Description

#### LISS/Coombs

- 004014 6 x AHG (Anti-IgG + C3d) tests (Id-n°: 50531) rabbit, 4 x 12
- 004017 6 x AHG (Anti-IgG + C3d) tests (Id-n°: 50531) rabbit, 24 x 12
- 004016 6 x AHG (Anti-IgG + C3d) tests (Id-n°: 50531) rabbit, 60 x 12
- 004015 6 x AHG (Anti-IgG + C3d) tests (Id-n°: 50531) rabbit, 112 x 12

#### Coombs Anti-IgG

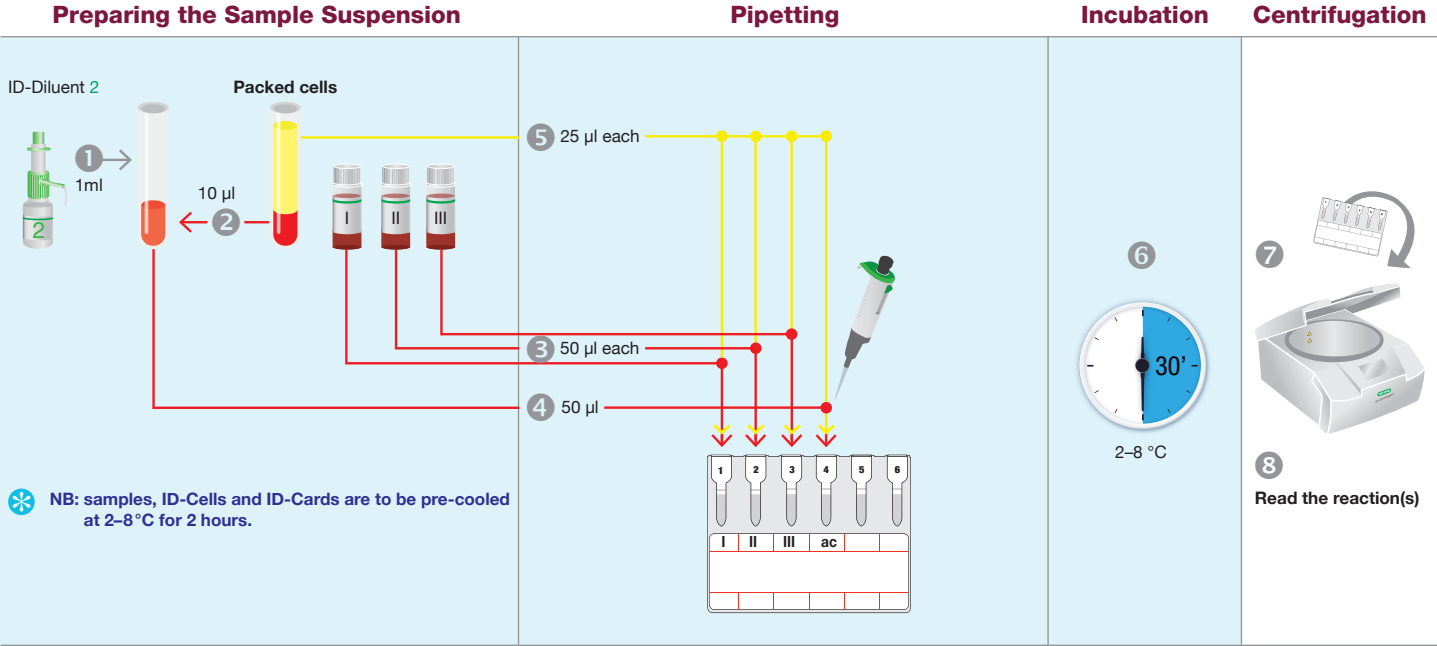
- 004024 6 x AHG (Anti-IgG) tests (Id-n°: 50540) rabbit, 4 x 12
- 004027 6 x AHG (Anti-IgG) tests (Id-n°: 50540) rabbit, 24 x 12
- 004026 6 x AHG (Anti-IgG) tests (Id-n°: 50540) rabbit, 60 x 12
- 004025 6 x AHG (Anti-IgG) tests (Id-n°: 50540) rabbit, 112 x 12

#### ID-DiaScreen Prophylax

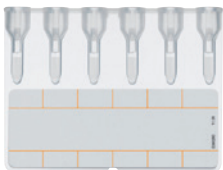
- 004330 Set of 6 vials for IAT R<sub>1</sub>R<sub>2</sub>, r'r, r'r, rr, rr (Id-n°: 45660), 6 x 5 ml



# Cold Antibody Screening and Cold Agglutinins using ID-DiaCell I-II-III and autocontrol



## Product Pictures



**NaCl, Enzyme Test and Cold Agglutinins**  
(Id-n°: 50520)



**ID-DiaCell I-II-III**  
(Id-n°: 45184)



**ID-Diluent 2**  
(Id-n°: 05761)  
100 ml/500 ml

### Ordering Information

Catalog # Description

#### NaCl, Enzyme Test and Cold Agglutinins

005014	<b>A<sub>1</sub>, A<sub>2</sub>, B/A<sub>1</sub>, A<sub>2</sub>, B or A<sub>1</sub>, B/A<sub>1</sub>, B/A<sub>1</sub>, B or IP, IIP, IIIP or IP, IIP, AC</b> (Id-n°: 50520), 4 x 12
005017	<b>A<sub>1</sub>, A<sub>2</sub>, B/A<sub>1</sub>, A<sub>2</sub>, B or A<sub>1</sub>, B/A<sub>1</sub>, B/A<sub>1</sub>, B or IP, IIP, IIIP or IP, IIP, AC</b> (Id-n°: 50520), 24 x 12
005016	<b>A<sub>1</sub>, A<sub>2</sub>, B/A<sub>1</sub>, A<sub>2</sub>, B or A<sub>1</sub>, B/A<sub>1</sub>, B/A<sub>1</sub>, B or IP, IIP, IIIP or IP, IIP, AC</b> (Id-n°: 50520), 60 x 12
005015	<b>A<sub>1</sub>, A<sub>2</sub>, B/A<sub>1</sub>, A<sub>2</sub>, B or A<sub>1</sub>, B/A<sub>1</sub>, B/A<sub>1</sub>, B or IP, IIP, IIIP or IP, IIP, AC</b> (Id-n°: 50520), 112 x 12

#### ID-DiaCell I-II-III

004310 **Set of 3 vials for IAT and NaCl test R<sub>1</sub>R<sub>1</sub>, R<sub>2</sub>R<sub>2</sub>, rr** (Id-n°: 45184), 3 x 10 ml

#### ID-Diluent 2

009260 **Modified LISS for red cell suspensions** (Id-n°: 05761), 2 x 100 ml  
009280 **Modified LISS for red cell suspensions** (Id-n°: 05761), 1 x 500 ml





# Antibody Identification

<b>5/01 and 5/02</b>	Antibody Identification	ID-DiaPanel and autocontrol
<b>5/03 and 5/04</b>	Antibody Identification	ID-DiaPanel-P and autocontrol
<b>5/05 and 5/06</b>	Antibody Identification	ID-DiaPanel Plus 6

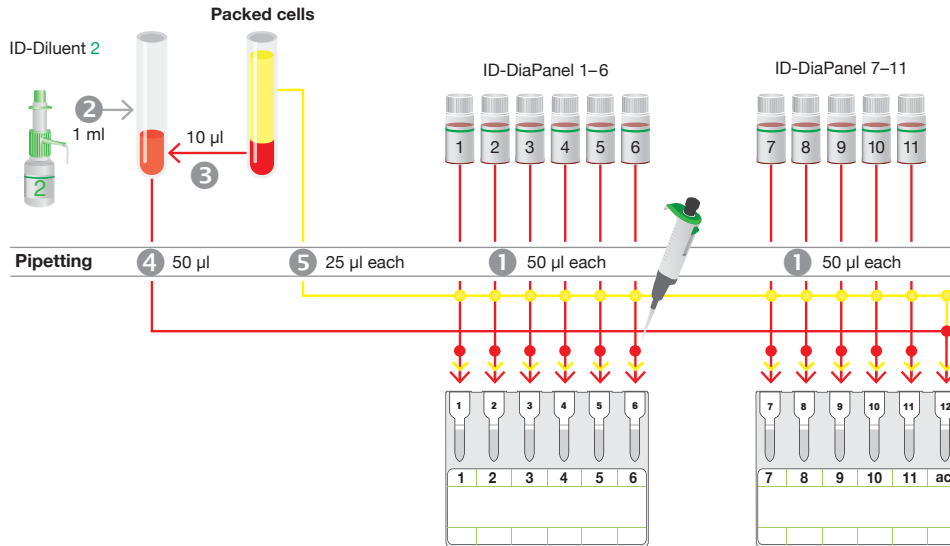




# Antibody Identification

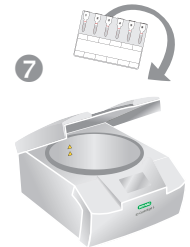
using ID-DiaPanel and autocontrol

## Preparing the Sample Suspension



## Incubation

## Centrifugation



8  
Read the reaction(s)

## Product Pictures



**LISS/Coombs**  
(Id-n°: 50531)



**Coombs Anti-IgG**  
(Id-n°: 50540)



**ID-DiaPanel**  
(Id-n°: 45161)



**ID-Diluent 2**  
(Id-n°: 05761)  
100 ml/500 ml

## Ordering Information

Catalog # Description

### LISS/Coombs

- 004014 6 x AHG (Anti-IgG + C3d) tests (Id-n°: 50531) rabbit, 4 x 12
- 004017 6 x AHG (Anti-IgG + C3d) tests (Id-n°: 50531) rabbit, 24 x 12
- 004016 6 x AHG (Anti-IgG + C3d) tests (Id-n°: 50531) rabbit, 60 x 12
- 004015 6 x AHG (Anti-IgG + C3d) tests (Id-n°: 50531) rabbit, 112 x 12

### Coombs Anti-IgG

- 004024 6 x AHG (Anti-IgG) tests (Id-n°: 50540) rabbit, 4 x 12
- 004027 6 x AHG (Anti-IgG) tests (Id-n°: 50540) rabbit, 24 x 12
- 004026 6 x AHG (Anti-IgG) tests (Id-n°: 50540) rabbit, 60 x 12
- 004025 6 x AHG (Anti-IgG) tests (Id-n°: 50540) rabbit, 112 x 12

### ID-DiaPanel

- 004114 Set of 11 vials for IAT and NaCl test (Id-n°: 45161), 11 x 4 ml

### ID-Diluent 2

- 009260 Modified LISS for red cell suspensions (Id-n°: 05761), 2 x 100 ml
- 009280 Modified LISS for red cell suspensions (Id-n°: 05761), 1 x 500 ml

Visit [www.bio-rad.com/immunohematology](http://www.bio-rad.com/immunohematology) for more information ■ This Quick Guide does not replace the corresponding box-insert!

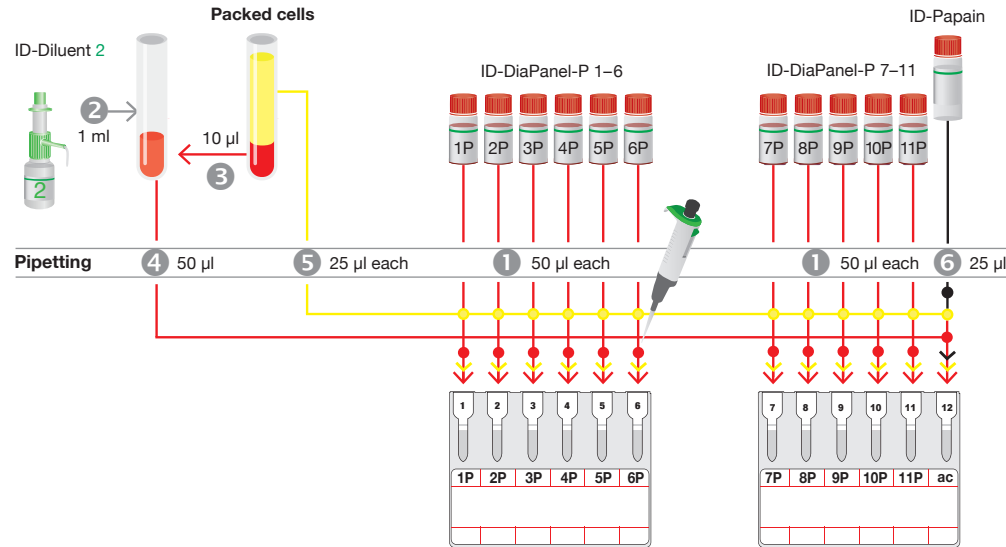
© Bio-Rad Laboratories, Inc.



# Antibody Identification

using ID-DiaPanel-P and autocontrol

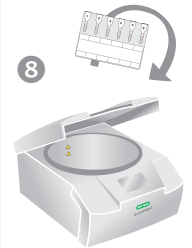
## Preparing the Sample Suspension



## Incubation

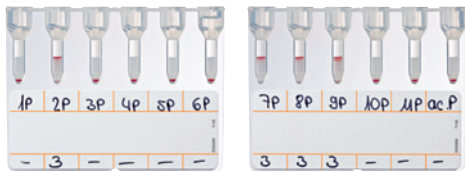


## Centrifugation



9 Read the reaction(s)

## Product Pictures



**NaCl, Enzyme Test and Cold Agglutinins**  
(Id-n°: 50520)



**ID-DiaPanel-P**  
(Id-n°: 45171)



**ID-Papain**  
(Id-n°: 06311)



**ID-Diluent 2**  
(Id-n°: 05761)  
100 ml/500 ml

## Ordering Information

Catalog # Description

### NaCl, Enzyme Test and Cold Agglutinins

005014 **6 x tests** (Id-n°: 50520), 4 x 12  
005017 **6 x tests** (Id-n°: 50520), 24 x 12  
005016 **6 x tests** (Id-n°: 50520), 60 x 12  
005015 **6 x tests** (Id-n°: 50520), 112 x 12

### ID-DiaPanel-P

004214 **Set of 11 vials for enzyme test, papainized** (Id-n°: 45171), 11 x 4 ml

### ID-Papain

005510 **Papain solution for papainizing red cells** (Id-n°: 06311), 1 x 10 ml  
005511 **Papain solution for papainizing red cells** (Id-n°: 06311), 10 x 10 ml

### ID-Diluent 2

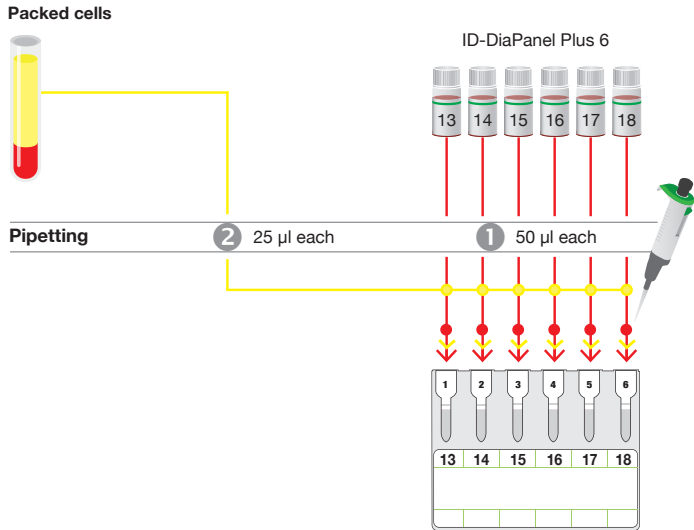
009260 **Modified LISS for red cell suspensions** (Id-n°: 05761), 2 x 100 ml  
009280 **Modified LISS for red cell suspensions** (Id-n°: 05761), 1 x 500 ml



# Antibody Identification

using ID-DiaPanel Plus 6

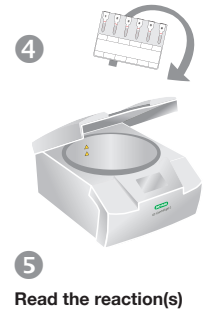
## Preparing the Sample Suspension



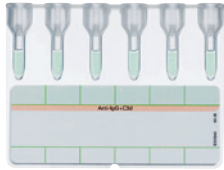
## Incubation



## Centrifugation



## Product Pictures



**LISS/Coombs**  
(Id-n°: 50531)



**Coombs Anti-IgG**  
(Id-n°: 50540)



**ID-DiaPanel Plus 6**  
(Id-n°: 45670)

### Ordering Information

Catalog # Description

#### LISS/Coombs

- 004014 6 x AHG (Anti-IgG + C3d) tests (Id-n°: 50531) rabbit, 4 x 12
- 004017 6 x AHG (Anti-IgG + C3d) tests (Id-n°: 50531) rabbit, 24 x 12
- 004016 6 x AHG (Anti-IgG + C3d) tests (Id-n°: 50531) rabbit, 60 x 12
- 004015 6 x AHG (Anti-IgG + C3d) tests (Id-n°: 50531) rabbit, 112 x 12

#### Coombs Anti-IgG

- 004024 6 x AHG (Anti-IgG) tests (Id-n°: 50540) rabbit, 4 x 12
- 004027 6 x AHG (Anti-IgG) tests (Id-n°: 50540) rabbit, 24 x 12
- 004026 6 x AHG (Anti-IgG) tests (Id-n°: 50540) rabbit, 60 x 12
- 004025 6 x AHG (Anti-IgG) tests (Id-n°: 50540) rabbit, 112 x 12

#### ID-DiaPanel Plus 6

- 004414 Set of 6 vials for IAT and NaCl test (Id-n°: 45670), 6 x 4 ml



# Compatibility Tests

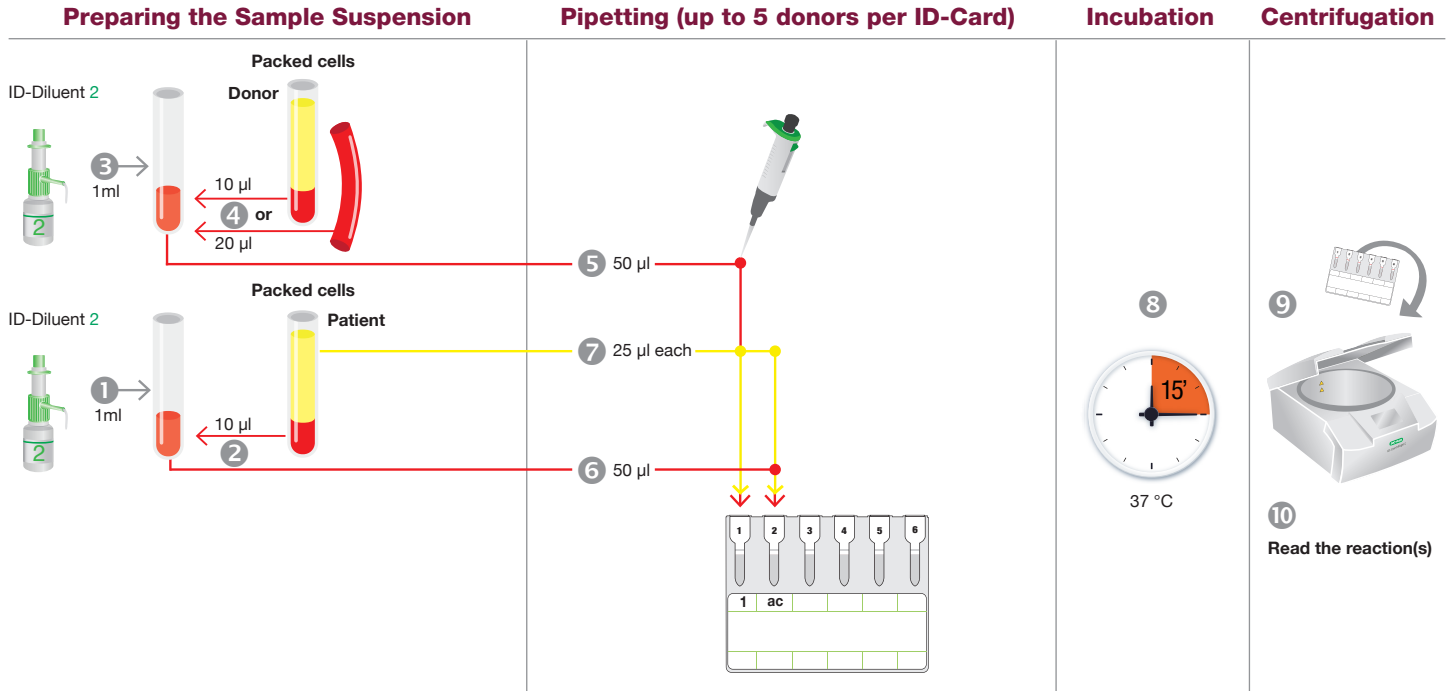
<b>6/01 and 6/02</b>	Compatibility Tests	By IAT with autocontrol
<b>6/03 and 6/04</b>	Compatibility Tests	By enzyme technique with autocontrol
<b>6/05 and 6/06</b>	Compatibility Tests	Monoclonal Antibodies using DiaClon Complete Crossmatch
<b>6/07 and 6/08</b>	Compatibility Tests	Human Antibodies using Complete Crossmatch



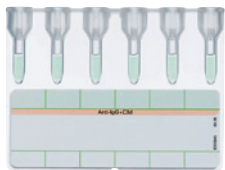


# Compatibility Tests

## By IAT with autocontrol



## Product Pictures



**LISS/Coombs**  
(Id-n°: 50531)



**Coombs Anti-IgG**  
(Id-n°: 50540)



**ID-Diluent 2**  
(Id-n°: 05761)  
100 ml/500 ml

### Ordering Information

Catalog # Description

#### LISS/Coombs

- 004014 **6 x AHG (Anti-IgG + C3d) tests** (Id-n°: 50531) rabbit, 4 x 12
- 004017 **6 x AHG (Anti-IgG + C3d) tests** (Id-n°: 50531) rabbit, 24 x 12
- 004016 **6 x AHG (Anti-IgG + C3d) tests** (Id-n°: 50531) rabbit, 60 x 12
- 004015 **6 x AHG (Anti-IgG + C3d) tests** (Id-n°: 50531) rabbit, 112 x 12

#### Coombs Anti-IgG

- 004024 **6 x AHG (Anti-IgG) tests** (Id-n°: 50540) rabbit, 4 x 12
- 004027 **6 x AHG (Anti-IgG) tests** (Id-n°: 50540) rabbit, 24 x 12
- 004026 **6 x AHG (Anti-IgG) tests** (Id-n°: 50540) rabbit, 60 x 12
- 004025 **6 x AHG (Anti-IgG) tests** (Id-n°: 50540) rabbit, 112 x 12

#### ID-Diluent 2

- 009260 **Modified LISS for red cell suspensions** (Id-n°: 05761), 2 x 100 ml
- 009280 **Modified LISS for red cell suspensions** (Id-n°: 05761), 1 x 500 ml

Visit [www.bio-rad.com/immunohematology](http://www.bio-rad.com/immunohematology) for more information ■ *This Quick Guide does not replace the corresponding box-insert!*

© Bio-Rad Laboratories, Inc.

# Compatibility Tests

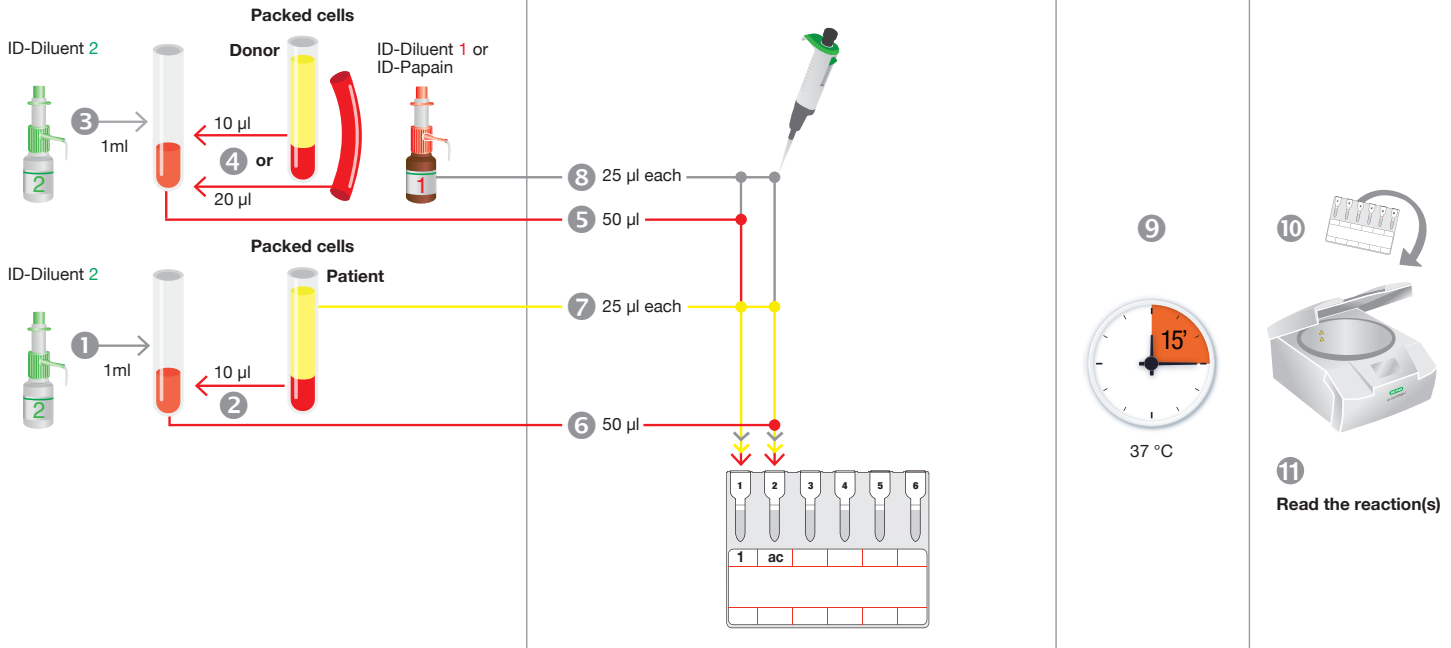
By enzyme technique with autocontrol

## Preparing the Sample Suspension

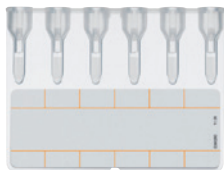
## Pipetting (up to 5 donors per ID-Card)

## Incubation

## Centrifugation



## Product Pictures



**NaCl, Enzyme Test and Cold Agglutinins**  
(Id-n°: 50520)



**ID-Papain**  
(Id-n°: 06311)



**ID-Diluent 1**  
(Id-n°: 05751)  
100 ml/500 ml



**ID-Diluent 2**  
(Id-n°: 05761)  
100 ml/500 ml

### Ordering Information

Catalog # Description

#### NaCl, Enzyme Test and Cold Agglutinins

005014 **6 x tests** (Id-n°: 50520), 4 x 12  
005017 **6 x tests** (Id-n°: 50520), 24 x 12  
005016 **6 x tests** (Id-n°: 50520), 60 x 12  
005015 **6 x tests** (Id-n°: 50520), 112 x 12

#### ID-Papain

005510 **Papain solution for papainizing red cells** (Id-n°: 06311), 1 x 10 ml  
005511 **Papain solution for papainizing red cells** (Id-n°: 06311), 10 x 10 ml

#### ID-Diluent 1

009160 **Modified Bromelin solution for red cell suspensions and enzyme tests** (Id-n°: 05751), 2 x 100 ml  
009180 **Modified Bromelin solution for red cell suspensions and enzyme tests** (Id-n°: 05751), 1 x 500 ml

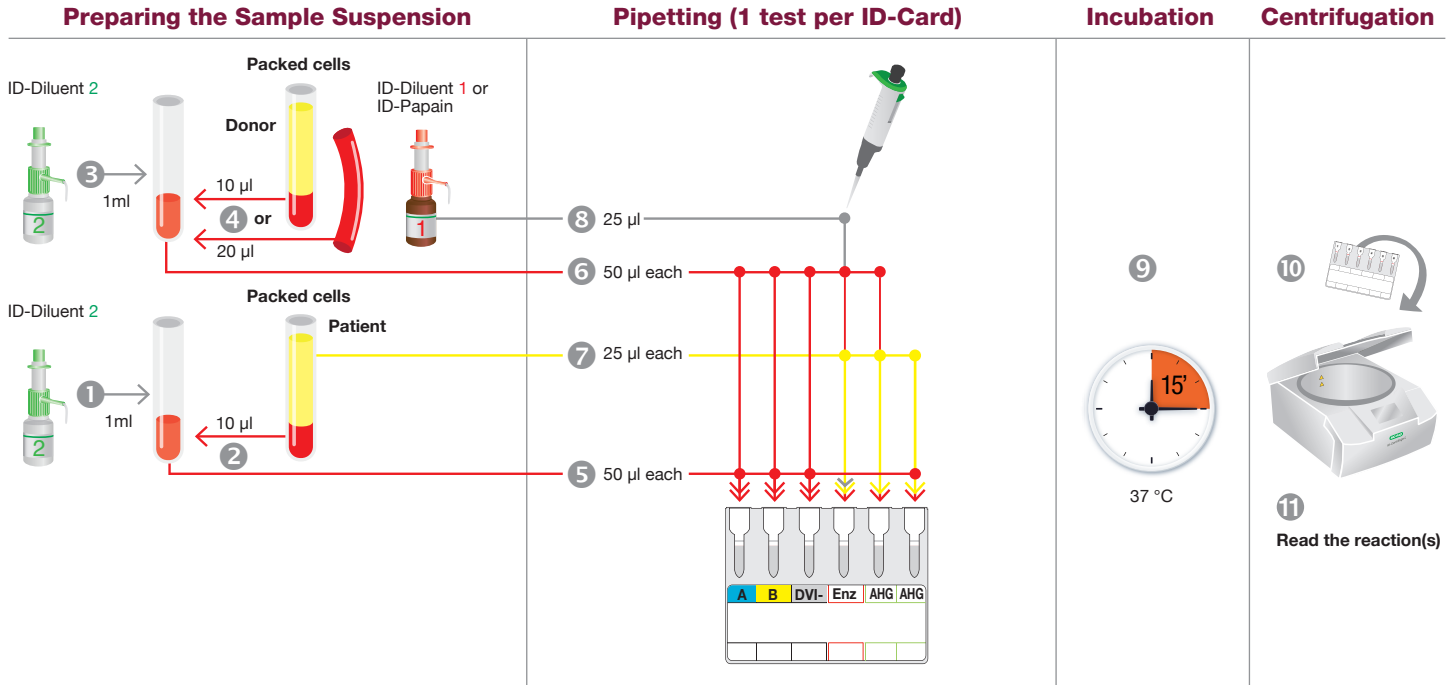
#### ID-Diluent 2

009260 **Modified LISS for red cell suspensions** (Id-n°: 05761), 2 x 100 ml  
009280 **Modified LISS for red cell suspensions** (Id-n°: 05761), 1 x 500 ml

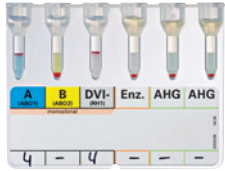


# Compatibility Tests

# Monoclonal Antibodies using DiaClon Complete Crossmatch with ABO/D Test of both Donor and Patient



## Product Pictures



**DiaClon Complete Crossmatch**  
(Id-n°: 50601)



**ID-Papain**  
(Id-n°: 06311)



**ID-Diluent 1**  
(Id-n°: 05751)  
100 ml/500 ml



**ID-Diluent 2**  
(Id-n°: 05761)  
100 ml/500 ml

## Ordering Information

Catalog # Description

### DiaClon Complete Crossmatch

004614 A, B, DVI-/Enz./2 x AHG (Id-n°: 50601), 4 x 12  
004617 A, B, DVI-/Enz./2 x AHG (Id-n°: 50601), 24 x 12  
004616 A, B, DVI-/Enz./2 x AHG (Id-n°: 50601), 60 x 12  
004615 A, B, DVI-/Enz./2 x AHG (Id-n°: 50601), 112 x 12

### ID-Papain

005510 Papain solution for papainizing red cells (Id-n°: 06311), 1 x 10 ml  
005511 Papain solution for papainizing red cells (Id-n°: 06311), 10 x 10 ml

### ID-Diluent 1

009160 Modified Bromelin solution for red cell suspensions and enzyme tests (Id-n°: 05751), 2 x 100 ml  
009180 Modified Bromelin solution for red cell suspensions and enzyme tests (Id-n°: 05751), 1 x 500 ml

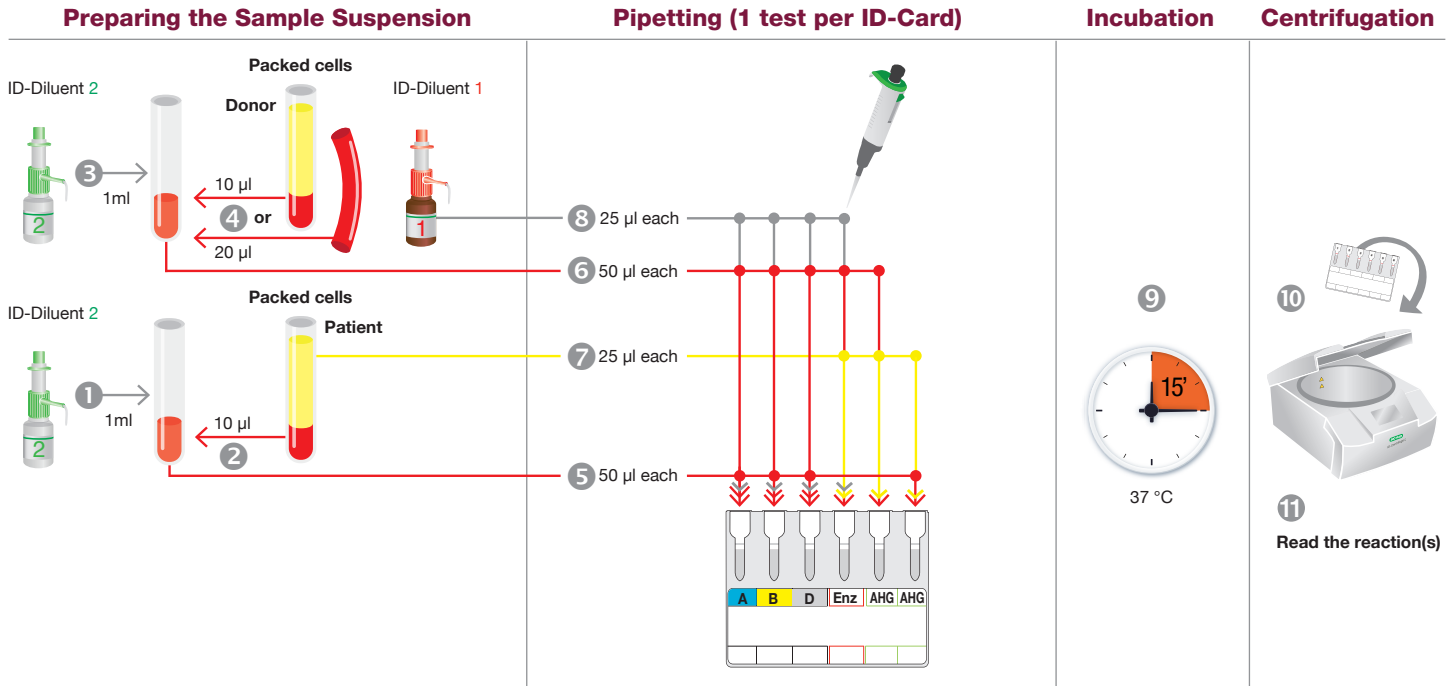
### ID-Diluent 2

009260 Modified LISS for red cell suspensions (Id-n°: 05761), 2 x 100 ml  
009280 Modified LISS for red cell suspensions (Id-n°: 05761), 1 x 500 ml



# Compatibility Tests

## Human Antibodies using Complete Crossmatch with ABO/D Test of both Donor and Patient



## Product Pictures



**Complete Crossmatch**  
(Id-n°: 50591)



**ID-Diluent 1**  
(Id-n°: 05751)  
100 ml/500 ml



**ID-Diluent 2**  
(Id-n°: 05761)  
100 ml/500 ml

## Ordering Information

Catalog # Description

### Complete Crossmatch

004604	A, B, D/Enz./2 x AHG (Id-n°: 50591), 4 x 12
004607	A, B, D/Enz./2 x AHG (Id-n°: 50591), 24 x 12
004606	A, B, D/Enz./2 x AHG (Id-n°: 50591), 60 x 12
004605	A, B, D/Enz./2 x AHG (Id-n°: 50591), 112 x 12

### ID-Diluent 1

009160	Modified Bromelin solution for red cell suspensions and enzyme tests (Id-n°: 05751), 2 x 100 ml
009180	Modified Bromelin solution for red cell suspensions and enzyme tests (Id-n°: 05751), 1 x 500 ml

### ID-Diluent 2

009260	Modified LISS for red cell suspensions (Id-n°: 05761), 2 x 100 ml
009280	Modified LISS for red cell suspensions (Id-n°: 05761), 1 x 500 ml

# Direct Antiglobulin Test (DAT)

<b>7/01 and 7/02</b>	Direct Antiglobulin Test (DAT)	LISS/Coombs or Coombs Anti-IgG
<b>7/03 and 7/04</b>	Direct Antiglobulin Test (DAT)	DC-Screening I
<b>7/05 and 7/06</b>	Direct Antiglobulin Test (DAT)	DC-Screening II
<b>7/07 and 7/08</b>	Direct Antiglobulin Test (DAT)	DAT IgG-Dilution
<b>7/09 and 7/10</b>	Direct Antiglobulin Test (DAT)	DAT IgG1/IgG3

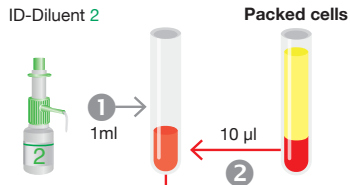




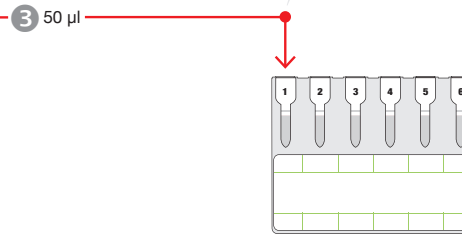
# Direct Antiglobulin Test (DAT)

using LISS/Coombs or Coombs Anti-IgG

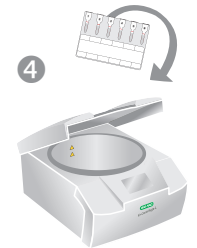
## Preparing the Sample Suspension



## Pipetting (6 tests per ID-Card)

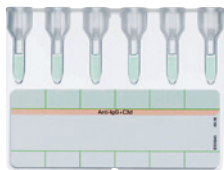


## Centrifugation



5 Read the reaction(s)

## Product Pictures



**LISS/Coombs**  
(Id-n°: 50531)



**Coombs Anti-IgG**  
(Id-n°: 50540)



**ID-Diluent 2**  
(Id-n°: 05761)  
100 ml/500 ml

## Ordering Information

Catalog # Description

### LISS/Coombs

004014 **6 x AHG (Anti-IgG + C3d)** (Id-n°: 50531) rabbit, 4 x 12  
004017 **6 x AHG (Anti-IgG + C3d)** (Id-n°: 50531) rabbit, 24 x 12  
004016 **6 x AHG (Anti-IgG + C3d)** (Id-n°: 50531) rabbit, 60 x 12  
004015 **6 x AHG (Anti-IgG + C3d)** (Id-n°: 50531) rabbit, 112 x 12

### Coombs Anti-IgG

004024 **6 x AHG (Anti-IgG)** (Id-n°: 50540) rabbit, 4 x 12  
004027 **6 x AHG (Anti-IgG)** (Id-n°: 50540) rabbit, 24 x 12  
004026 **6 x AHG (Anti-IgG)** (Id-n°: 50540) rabbit, 60 x 12  
004025 **6 x AHG (Anti-IgG)** (Id-n°: 50540) rabbit, 112 x 12

### ID-Diluent 2

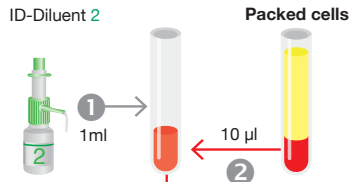
009260 **Modified LISS for red cell suspensions** (Id-n°: 05761), 2 x 100 ml  
009280 **Modified LISS for red cell suspensions** (Id-n°: 05761), 1 x 500 ml



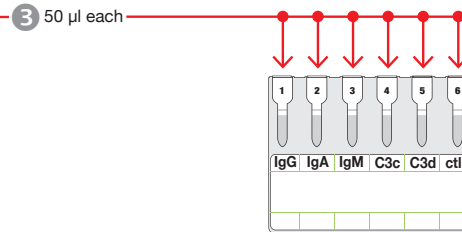
# Direct Antiglobulin Test (DAT)

using DC-Screening I

## Preparing the Sample Suspension



## Pipetting (1 test per ID-Card)



## Centrifugation



## Product Pictures



**DC-Screening I**  
(Id-n°: 50830)



**ID-Diluent 2**  
(Id-n°: 05761)  
100 ml/500 ml

### Ordering Information

Catalog # Description

#### DC-Screening I

004851 **IgG, IgA, IgM, C3c, C3d, ctl** (Id-n°: 50830), 1 x 12  
004857 **IgG, IgA, IgM, C3c, C3d, ctl** (Id-n°: 50830), 24 x 12  
004856 **IgG, IgA, IgM, C3c, C3d, ctl** (Id-n°: 50830), 60 x 12

#### ID-Diluent 2

009260 **Modified LISS for red cell suspensions** (Id-n°: 05761), 2 x 100 ml  
009280 **Modified LISS for red cell suspensions** (Id-n°: 05761), 1 x 500 ml

Visit [www.bio-rad.com/immunoematology](http://www.bio-rad.com/immunoematology) for more information ■ *This Quick Guide does not replace the corresponding box-insert!*

© Bio-Rad Laboratories, Inc.

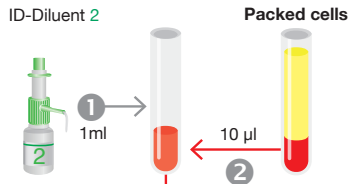




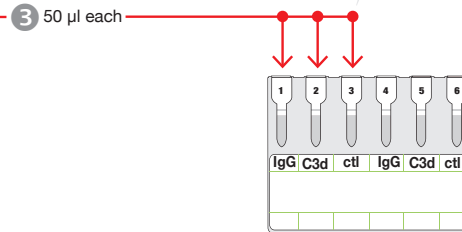
# Direct Antiglobulin Test (DAT)

using DC-Screening II

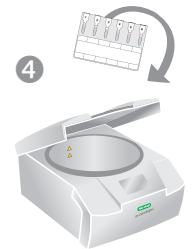
## Preparing the Sample Suspension



## Pipetting (2 tests per ID-Card)



## Centrifugation



5 Read the reaction(s)

## Product Pictures



**DC-Screening II**  
(Id-n°: 50560)



**ID-Diluent 2**  
(Id-n°: 05761)  
100 ml/500 ml

### Ordering Information

Catalog # Description

#### DC-Screening II

004831 **IgG, C3d, ctl/IgG, C3d, ctl** (Id-n°: 50560), 1 x 12  
004837 **IgG, C3d, ctl/IgG, C3d, ctl** (Id-n°: 50560), 24 x 12  
004836 **IgG, C3d, ctl/IgG, C3d, ctl** (Id-n°: 50560), 60 x 12

#### ID-Diluent 2

009260 **Modified LISS for red cell suspensions** (Id-n°: 05761), 2 x 100 ml  
009280 **Modified LISS for red cell suspensions** (Id-n°: 05761), 1 x 500 ml

Visit [www.bio-rad.com/immunoematology](http://www.bio-rad.com/immunoematology) for more information ■ *This Quick Guide does not replace the corresponding box-insert!*

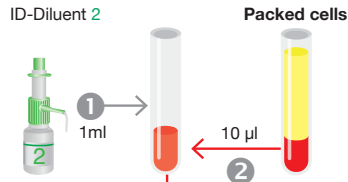
© Bio-Rad Laboratories, Inc.



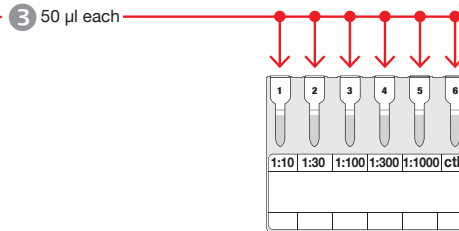
# Direct Antiglobulin Test (DAT)

using DAT IgG - Dilution

## Preparing the Sample Suspension



## Pipetting (1 test per ID-Card)



## Centrifugation



## Product Pictures



**DAT IgG-Dilution**  
(Id-n°: 50870)



**ID-Diluent 2**  
(Id-n°: 05761)  
100 ml/500 ml

### Ordering Information

Catalog # Description

#### DAT IgG-Dilution

004033 1:10, 1:30, 1:100, 1:300, 1:1,000, ctl (Id-n°: 50870) rabbit, 1 x 12

#### ID-Diluent 2

009260 Modified LISS for red cell suspensions (Id-n°: 05761), 2 x 100 ml

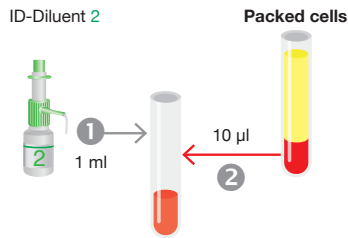
009280 Modified LISS for red cell suspensions (Id-n°: 05761), 1 x 500 ml



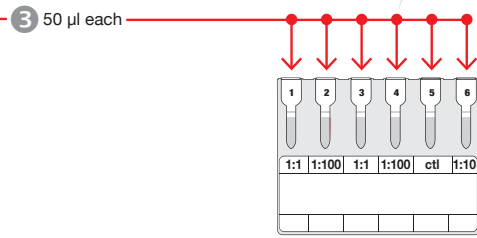
# Direct Antiglobulin Test (DAT)

using DAT IgG1/IgG3

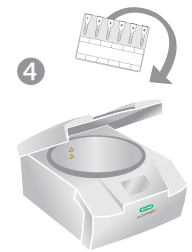
## Preparing the Sample Suspension



## Pipetting (1 test per ID-Card)



## Centrifugation



5 Read the reaction(s)

## Product Pictures



**DAT IgG1/IgG3**  
(Id-n°: 50890)



**ID-Diluent 2**  
(Id-n°: 05761)  
100 ml/500 ml

### Ordering Information

Catalog # Description

#### **DAT IgG1/IgG3**

004043 IgG subclasses (Id-n°: 50890), 1 x 12

#### **ID-Diluent 2**

009260 Modified LISS for red cell suspensions (Id-n°: 05761), 2 x 100 ml

009280 Modified LISS for red cell suspensions (Id-n°: 05761), 1 x 500 ml



# Type and Screen

**8/01 and 8/02** Type and Screen

Monoclonal Antibodies

---



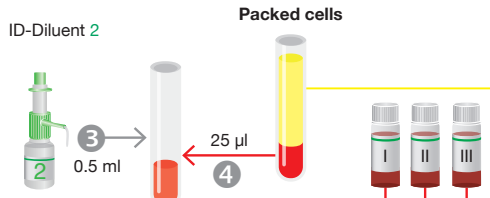




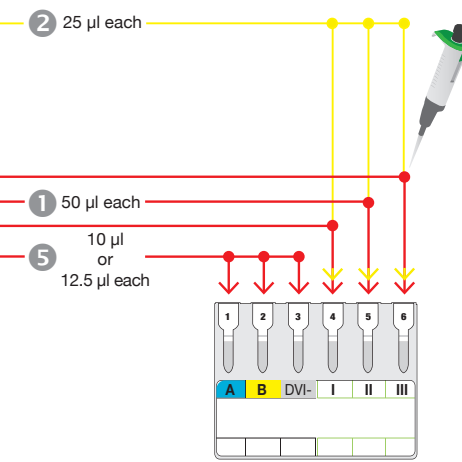
# Type and Screen

using DiaClon Type and Screen

## Preparing the Sample Suspension



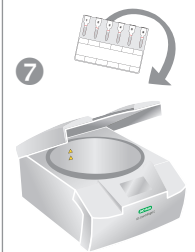
## Pipetting (1 test per ID-Card)



## Incubation



## Centrifugation



8 Read the reaction(s)

## Product Pictures



**DiaClon Type and Screen**  
(Id-n°: 50682)



**ID-DiaCell I-II-III**  
(Id-n°: 45184)



**ID-Diluent 2**  
(Id-n°: 05761)  
100 ml/500 ml

### Ordering Information

Catalog # Description

#### DiaClon Type + Screen

002437 A, B, DVI-/3 x AHG (Id-n°: 50682), 4 x 12  
002431 A, B, DVI-/3 x AHG (Id-n°: 50682), 24 x 12  
002439 A, B, DVI-/3 x AHG (Id-n°: 50682), 60 x 12  
002438 A, B, DVI-/3 x AHG (Id-n°: 50682), 112 x 12

#### ID-DiaCell I-II-III

004310 Set of 3 vials for IAT and NaCl test  $R_1^w R_1$ ,  $R_2 R_2$ , rr (Id-n°: 45184), 3 x 10 ml

#### ID-Diluent 2

009260 Modified LISS for red cell suspensions (Id-n°: 05761), 2 x 100 ml  
009280 Modified LISS for red cell suspensions (Id-n°: 05761), 1 x 500 ml



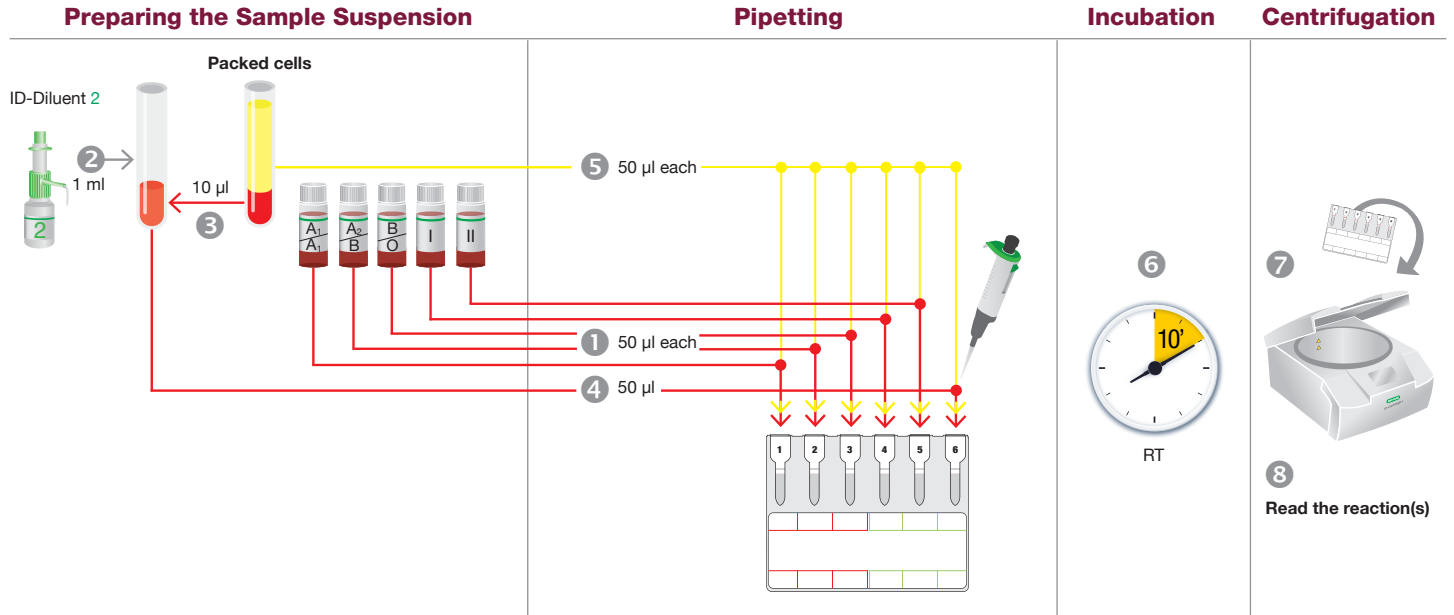
# Reverse Grouping with Antibody Screening

<b>9/01 and 9/02</b>	Reverse Grouping with Antibody Screening	ID-DiaCell ABO / I-II + autocontrol
<b>9/03 and 9/04</b>	Reverse Grouping with Antibody Screening	ID-DiaCell ABO / I-II-III
<b>9/05 and 9/06</b>	Reverse Grouping with Antibody Screening	ID-DiaCell ABO / I-II





# Reverse Grouping with Antibody Screening using ID-DiaCell ABO/I-II (A<sub>1</sub>-A<sub>2</sub>-B/I-II) + autocontrol



## Product Pictures



**Reverse Grouping with Antibody Screening**  
(Id-n°: 50510)



**ID-DiaCell ABO**  
(Id-n°: 45352)



**ID-DiaCell ABO**  
(Id-n°: 45082)



**ID-DiaCell I-II**  
(Id-n°: 45151)



**ID-Diluent 2**  
(Id-n°: 05761)  
100 ml/500 ml

## Ordering Information

Catalog # Description

### Reverse Grouping with Antibody Screening

- |        |                                                                                                                                                                             |
|--------|-----------------------------------------------------------------------------------------------------------------------------------------------------------------------------|
| 003014 | A <sub>1</sub> , A <sub>2</sub> , B, O/I, II or A <sub>1</sub> , A <sub>2</sub> , B/I, II, III or A <sub>1</sub> , A <sub>2</sub> , B/I, II, AC<br>(Id-n°: 50510), 4 x 12   |
| 003017 | A <sub>1</sub> , A <sub>2</sub> , B, O/I, II or A <sub>1</sub> , A <sub>2</sub> , B/I, II, III or A <sub>1</sub> , A <sub>2</sub> , B/I, II, AC<br>(Id-n°: 50510), 24 x 12  |
| 003016 | A <sub>1</sub> , A <sub>2</sub> , B, O/I, II or A <sub>1</sub> , A <sub>2</sub> , B/I, II, III or A <sub>1</sub> , A <sub>2</sub> , B/I, II, AC<br>(Id-n°: 50510), 60 x 12  |
| 003015 | A <sub>1</sub> , A <sub>2</sub> , B, O/I, II or A <sub>1</sub> , A <sub>2</sub> , B/I, II, III or A <sub>1</sub> , A <sub>2</sub> , B/I, II, AC<br>(Id-n°: 50510), 112 x 12 |

### ID-DiaCell ABO

- |        |                                                                              |
|--------|------------------------------------------------------------------------------|
| 003615 | Set of 3 vials A <sub>1</sub> , B, O (Id-n°: 45352), 3 x 10 ml               |
| 003617 | Set of 3 vials A <sub>1</sub> , A <sub>2</sub> , B (Id-n°: 45082), 3 x 10 ml |

### ID-DiaCell I-II

- |        |                                                                                                                              |
|--------|------------------------------------------------------------------------------------------------------------------------------|
| 003613 | Set of 2 vials for IAT and NaCl test R <sub>1</sub> R <sub>1</sub> , R <sub>2</sub> R <sub>2</sub> (Id-n°: 45151), 2 x 10 ml |
|--------|------------------------------------------------------------------------------------------------------------------------------|

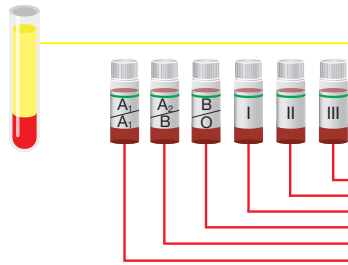
### ID-Diluent 2

- |        |                                                                   |
|--------|-------------------------------------------------------------------|
| 009260 | Modified LISS for red cell suspensions (Id-n°: 05761), 2 x 100 ml |
| 009280 | Modified LISS for red cell suspensions (Id-n°: 05761), 1 x 500 ml |

# Reverse Grouping with Antibody Screening using ID-DiaCell ABO/I-II-III (A<sub>1</sub>-A<sub>2</sub>-B/I-II-III)

## Preparing the Sample Suspension

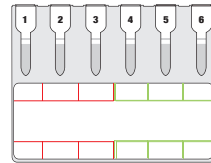
Packed cells



2 50 µl each

1 50 µl each

## Pipetting



## Incubation



## Centrifugation



## Product Pictures



**Reverse Grouping with Antibody Screening**  
(Id-n°: 50510)



**ID-DiaCell ABO**  
(Id-n°: 45352)



**ID-DiaCell I-II-III**  
(Id-n°: 45184)



**ID-DiaCell ABO/I-II-III**  
(Id-n°: 45012)

## Ordering Information

Catalog # Description

### Reverse Grouping with Antibody Screening

003014	A <sub>1</sub> , A <sub>2</sub> , B, O/I, II or A <sub>1</sub> , A <sub>2</sub> , B/I, II, III or A <sub>1</sub> , A <sub>2</sub> , B/I, II, AC (Id-n°: 50510), 4 x 12
003017	A <sub>1</sub> , A <sub>2</sub> , B, O/I, II or A <sub>1</sub> , A <sub>2</sub> , B/I, II, III or A <sub>1</sub> , A <sub>2</sub> , B/I, II, AC (Id-n°: 50510), 24 x 12
003016	A <sub>1</sub> , A <sub>2</sub> , B, O/I, II or A <sub>1</sub> , A <sub>2</sub> , B/I, II, III or A <sub>1</sub> , A <sub>2</sub> , B/I, II, AC (Id-n°: 50510), 60 x 12
003015	A <sub>1</sub> , A <sub>2</sub> , B, O/I, II or A <sub>1</sub> , A <sub>2</sub> , B/I, II, III or A <sub>1</sub> , A <sub>2</sub> , B/I, II, AC (Id-n°: 50510), 112 x 12

### ID-DiaCell ABO

003615 Set of 3 vials A<sub>1</sub>, B, O (Id-n°: 45352), 3 x 10 ml

### ID-DiaCell I-II-III

004310 Set of 3 vials for IAT and NaCl test R<sub>1</sub>R<sub>1</sub>, R<sub>2</sub>R<sub>2</sub>, rr (Id-n°: 45184), 3 x 10 ml

### ID-DiaCell ABO/I-II-III

003618 Set of 6 vials A<sub>1</sub>, A<sub>2</sub>, B/I, II, III (Id-n°: 45012), 6 x 10 ml





# Reverse Grouping with Antibody Screening using ID-DiaCell ABO/I-II (A<sub>1</sub>-A<sub>2</sub>-B-O/I-II)

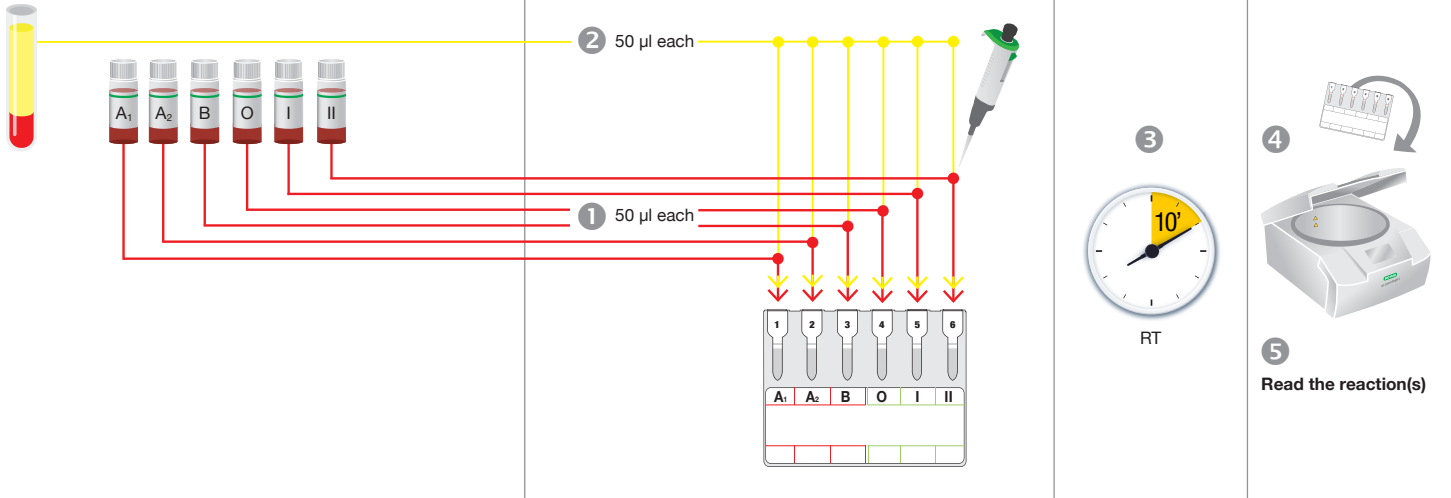
## Preparing the Sample Suspension

## Pipetting

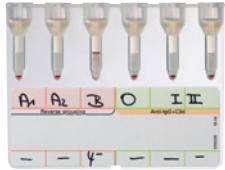
## Incubation

## Centrifugation

Packed cells



## Product Pictures



**Reverse Grouping with  
Antibody Screening**  
(Id-n°: 50510)



**ID-DiaCell ABO/I-II**  
(Id-n°: 45002)

### Ordering Information

Catalog # Description

#### Reverse Grouping with Antibody Screening

- |        |                                                                                                                                                                             |
|--------|-----------------------------------------------------------------------------------------------------------------------------------------------------------------------------|
| 003014 | A <sub>1</sub> , A <sub>2</sub> , B, O/I, II or A <sub>1</sub> , A <sub>2</sub> , B/I, II, III or A <sub>1</sub> , A <sub>2</sub> , B/I, II, AC<br>(Id-n°: 50510), 4 x 12   |
| 003017 | A <sub>1</sub> , A <sub>2</sub> , B, O/I, II or A <sub>1</sub> , A <sub>2</sub> , B/I, II, III or A <sub>1</sub> , A <sub>2</sub> , B/I, II, AC<br>(Id-n°: 50510), 24 x 12  |
| 003016 | A <sub>1</sub> , A <sub>2</sub> , B, O/I, II or A <sub>1</sub> , A <sub>2</sub> , B/I, II, III or A <sub>1</sub> , A <sub>2</sub> , B/I, II, AC<br>(Id-n°: 50510), 60 x 12  |
| 003015 | A <sub>1</sub> , A <sub>2</sub> , B, O/I, II or A <sub>1</sub> , A <sub>2</sub> , B/I, II, III or A <sub>1</sub> , A <sub>2</sub> , B/I, II, AC<br>(Id-n°: 50510), 112 x 12 |

#### ID-DiaCell ABO/I-II

- |        |                                                                                       |
|--------|---------------------------------------------------------------------------------------|
| 003610 | Set of 6 vials A <sub>1</sub> , A <sub>2</sub> , B, O/I, II (Id-n°: 45002), 6 x 10 ml |
|--------|---------------------------------------------------------------------------------------|



# Antigen Profiles

---

<b>10/01 and 10/02</b>	Antigen Profiles with ID-Antigen Profile III	Liquid Antisera
<b>10/03 and 10/04</b>	Antigen Profiles with ID-Antigen Profile I and ID-Antigen Profile II	ID-Diluent 1

---

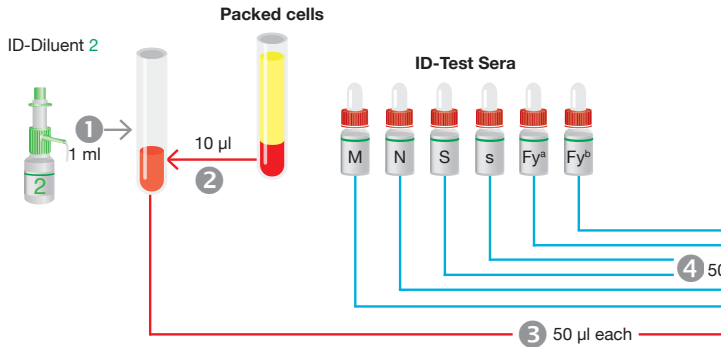




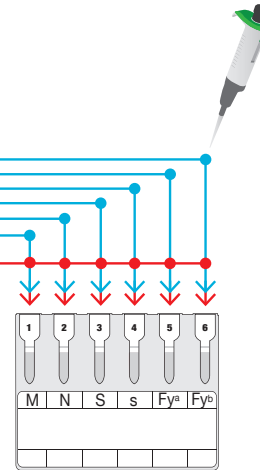
# Antigen Profiles with ID-Antigen Profile III

using Liquid Antisera

## Preparing the Sample Suspension



## Pipetting Pipetting (1 test per ID-Card)



## Incubation



## Centrifugation



## Product Pictures



**ID-Antigen Profile III**  
(Id-n°: 50390)



**Test serum**  
(Id-n°: 45140/45460)



**ID-Diluent 2**  
(Id-n°: 05761)  
100 ml/500 ml

### Ordering Information

Catalog # Description

#### **ID-Antigen Profile III**

008701 ID-Card: M, N, S, s, Fy<sup>a</sup>, Fy<sup>b</sup> (Id-n°: 50390), 1 x 12

#### **Test serum**

008711 Test sera ID-M, N, S, s, Fy<sup>a</sup>, Fy<sup>b</sup> (Id-n°: 45140), 6 x 1.4 ml

008712 Test sera ID-M, N, S, s, Fy<sup>a</sup>, Fy<sup>b</sup> (Id-n°: 45460), 6 x 5 ml

#### **ID-Diluent 2**

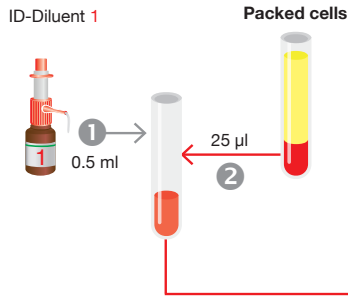
009260 Modified LISS for red cell suspensions (Id-n°: 05761), 2 x 100 ml

009280 Modified LISS for red cell suspensions (Id-n°: 05761), 1 x 500 ml



# Antigen Profiles with ID-Antigen Profile I and ID-Antigen Profile II using ID-Diluent 1

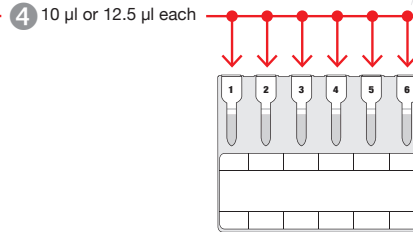
## Preparing the Sample Suspension



## Incubation



## Pipetting (1 test per ID-Card)



## Centrifugation



## Product Pictures



**ID-Antigen Profile I**  
(Id-n°: 50372)



**ID-Antigen Profile II**  
(Id-n°: 50380)



**ID-Diluent 1**  
(Id-n°: 05751)  
100 ml/500 ml

### Ordering Information

Catalog # Description

#### **ID-Antigen Profile I**

008510 P<sub>1</sub>, Le<sup>a</sup>, Le<sup>b</sup>, Lu<sup>a</sup>, Lu<sup>b</sup>, ctl (Id-n°: 50372), 1 x 12

#### **ID-Antigen Profile II**

008610 k, Kp<sup>a</sup>, Kp<sup>b</sup>, Jk<sup>a</sup>, Jk<sup>b</sup>, ctl (Id-n°: 50380), 1 x 12

#### **ID-Diluent 1**

009160 **Modified Bromelin solution for red cell suspensions and enzyme tests**  
(Id-n°: 05751), 2 x 100 ml

009180 **Modified Bromelin solution for red cell suspensions and enzyme tests**  
(Id-n°: 05751), 1 x 500 ml

Visit [www.bio-rad.com/immunohematology](http://www.bio-rad.com/immunohematology) for more information ■ *This Quick Guide does not replace the corresponding box-insert!*

© Bio-Rad Laboratories, Inc.



# Single Antigen Testing

<b>11/01 and 11/02</b>	Single Antigen Testing	ID-Diluent 1
<b>11/03 and 11/04</b>	Single Antigen Testing	ID-Diluent 2
<b>11/05 and 11/06</b>	Single Antigen Testing	ID-Diluent 1
<b>11/07 and 11/08</b>	Single Antigen Testing	ID-Diluent 2
<b>11/09 and 11/10</b>	Single Antigen Testing	IAT using Liquid Antisera
<b>11/11 and 11/12</b>	Single Antigen Testing	IAT using Liquid Antisera
<b>11/13 and 11/14</b>	Single Antigen Testing	IAT using the ID-Card LISS/Coombs
<b>11/15 and 11/16</b>	Single Antigen Testing	ID-Anti-Tj <sup>a</sup>
<b>11/17 and 11/18</b>	Single Antigen Testing	ID-Card NaCl, Enzyme Test and Cold Agglutinins/Lyophilized Antisera

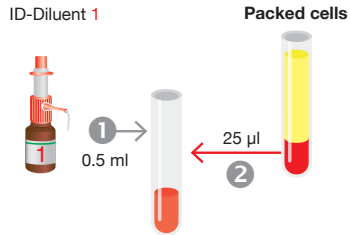




# Single Antigen Testing

using ID-Diluent 1

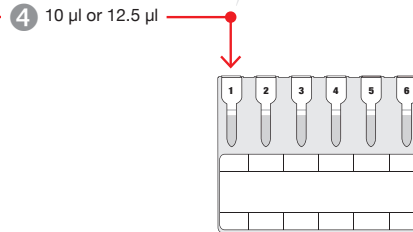
## Preparing the Sample Suspension



## Incubation



## Pipetting (6 tests per ID-Card)



## Centrifugation



## Product Pictures



**Anti-A<sub>1</sub> Absorbed**  
(ld-n°: 50140)



**DiaClon Anti-H**  
(ld-n°: 50150)



**Anti-D**  
(ld-n°: 50160)



**Anti-K**  
(ld-n°: 50190)



**Anti-k**  
(ld-n°: 50260)



**DiaClon Anti-P<sub>1</sub>**  
(ld-n°: 51180)



**DiaClon Anti-Le<sup>a</sup>**  
(ld-n°: 50242)



**DiaClon Anti-Le<sup>b</sup>**  
(ld-n°: 50250)



**DiaClon Anti-Jk<sup>a</sup>**  
(ld-n°: 50270)



**DiaClon Anti-Jk<sup>b</sup>**  
(ld-n°: 50280)



**Anti-Kp<sup>a</sup>**  
(ld-n°: 50290)



**Anti-Kp<sup>b</sup>**  
(ld-n°: 50300)



**Anti-Lu<sup>a</sup>**  
(ld-n°: 50310)



**Anti-Lu<sup>b</sup>**  
(ld-n°: 50320)



**ID-Diluent 1**  
(ld-n°: 05751)  
100 ml/500 ml

## Ordering Information

Catalog # Description

### Anti-A<sub>1</sub> Absorbed

001811 6 x A<sub>1</sub> (ld-n°: 50140), 1 x 12

### DiaClon Anti-H

001911 6 x H (ld-n°: 50150), 1 x 12

### Anti-D

001211 6 x D (ld-n°: 50160), 1 x 12

001213 6 x D (ld-n°: 50160), 24 x 12

### Anti-K

002111 6 x K (ld-n°: 50190), 1 x 12

### Anti-k

007251 6 x k (ld-n°: 50260), 1 x 12

### DiaClon Anti-P<sub>1</sub>

007212 6 x P<sub>1</sub> (ld-n°: 51180), 1 x 12

### DiaClon Anti-Le<sup>a</sup>

007221 6 x Le<sup>a</sup> (ld-n°: 50242), 1 x 12

### DiaClon Anti-Le<sup>b</sup>

007231 6 x Le<sup>b</sup> (ld-n°: 50250), 1 x 12

### DiaClon Anti-Jk<sup>a</sup>

007321 6 x Jk<sup>a</sup> (ld-n°: 50270), 1 x 12

### DiaClon Anti-Jk<sup>b</sup>

007331 6 x Jk<sup>b</sup> (ld-n°: 50280), 1 x 12

### Anti-Kp<sup>a</sup>

007301 6 x Kp<sup>a</sup> (ld-n°: 50290), 1 x 12

### Anti-Kp<sup>b</sup>

007311 6 x Kp<sup>b</sup> (ld-n°: 50300), 1 x 12

### Anti-Lu<sup>a</sup>

007351 6 x Lu<sup>a</sup> (ld-n°: 50310), 1 x 12

### Anti-Lu<sup>b</sup>

007361 6 x Lu<sup>b</sup> (ld-n°: 50320), 1 x 12

### ID-Diluent 1

009160 Modified Bromelin solution for red cell suspensions and enzyme tests

(ld-n°: 05751), 2 x 100 ml

009180 Modified Bromelin solution for red cell suspensions and enzyme tests

(ld-n°: 05751), 1 x 500 ml

Visit [www.bio-rad.com/immunoematology](http://www.bio-rad.com/immunoematology) for more information ■ This Quick Guide does not replace the corresponding box-insert!

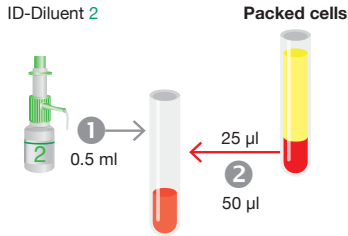
© Bio-Rad Laboratories, Inc.



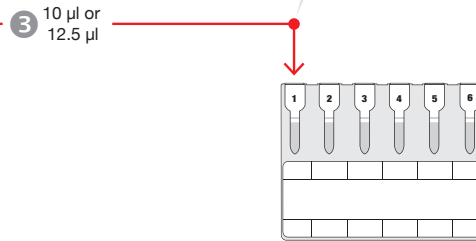
# Single Antigen Testing

using ID-Diluent 2

## Preparing the Sample Suspension



## Pipetting (6 tests per ID-Card)



## Centrifugation



## Product Pictures



**DiaClon Anti-M**  
(Id-n°: 50212)



**DiaClon Anti-N**  
(Id-n°: 50221)



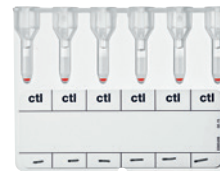
**DiaClon Anti-DVI neg.**  
(Id-n°: 50171)



**DiaClon Anti-K**  
(Id-n°: 50200)



**DiaClon Anti-C<sup>w</sup>**  
(Id-n°: 52010)



**Control Card A**  
(Id-n°: 52020)



**ID-Diluent 2**  
(Id-n°: 05761)  
100 ml/500 ml

The ID-Card Control Card A is designed to validate the reactions obtained with the ID-Cards DiaClon Anti-C<sup>w</sup> and DiaClon Rh-Subgroups + C<sup>w</sup> + K.

### Ordering Information

Catalog # Description

#### DiaClon Anti-M

007011 6 x M (Id-n°: 50212), 1 x 12

#### DiaClon Anti-N

007111 6 x N (Id-n°: 50221), 1 x 12

#### DiaClon Anti-DVI neg.

001251 6 x DVI neg. (Id-n°: 50171), 1 x 12  
001252 6 x DVI neg. (Id-n°: 50171), 24 x 12

#### DiaClon Anti-K

002121 6 x K (Id-n°: 50200), 1 x 12

#### DiaClon Anti-C<sup>w</sup>

001321 6 x C<sup>w</sup> (Id-n°: 52010), 1 x 12

#### Control Card A

001711 6 x ctl (Id-n°: 52020), 1 x 12  
001714 6 x ctl (Id-n°: 52020), 4 x 12

#### ID-Diluent 2

009260 Modified LISS for red cell suspensions  
(Id-n°: 05761), 2 x 100 ml  
009280 Modified LISS for red cell suspensions  
(Id-n°: 05761), 1 x 500 ml

Visit [www.bio-rad.com/immunoematology](http://www.bio-rad.com/immunoematology) for more information ■ This Quick Guide does not replace the corresponding box-insert!

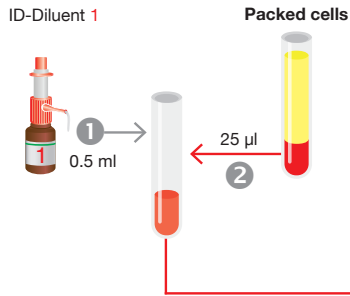
© Bio-Rad Laboratories, Inc.



# Single Antigen Testing

using ID-Diluent 1

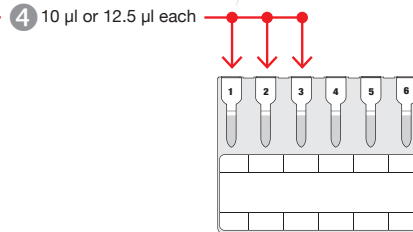
## Preparing the Sample Suspension



## Incubation



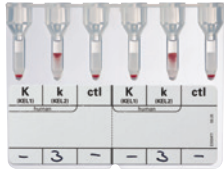
## Pipetting (2 tests per ID-Card)



## Centrifugation



## Product Pictures



**Anti-K/k**  
(Id-n°: 51220)



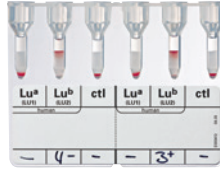
**DiaClon Anti-Le<sup>a</sup>/Le<sup>b</sup>**  
(Id-n°: 51240)



**DiaClon Anti-Jk<sup>a</sup>/Jk<sup>b</sup>**  
(Id-n°: 51250)



**Anti-Kp<sup>a</sup>/Kp<sup>b</sup>**  
(Id-n°: 51260)



**Anti-Lu<sup>a</sup>/Lu<sup>b</sup>**  
(Id-n°: 51230)



**ID-Diluent 1**  
(Id-n°: 05751)  
100 ml/500 ml

### Ordering Information

Catalog # Description

#### Anti-K/k

006021 K, k, ctl/K, k, ctl (Id-n°: 51220) human, 1 x 12

#### DiaClon Anti-Le<sup>a</sup>/Le<sup>b</sup>

006041 Le<sup>a</sup>, Le<sup>b</sup>, ctl/Le<sup>a</sup>, Le<sup>b</sup>, ctl (Id-n°: 51241), 1 x 12

#### DiaClon Anti-Jk<sup>a</sup>/Jk<sup>b</sup>

006051 Jk<sup>a</sup>, Jk<sup>b</sup>, ctl/Jk<sup>a</sup>, Jk<sup>b</sup>, ctl (Id-n°: 51250), 1 x 12

#### Anti-Kp<sup>a</sup>/Kp<sup>b</sup>

006061 Kp<sup>a</sup>, Kp<sup>b</sup>, ctl/Kp<sup>a</sup>, Kp<sup>b</sup>, ctl (Id-n°: 51260) human, 1 x 12

#### Anti-Lu<sup>a</sup>/Lu<sup>b</sup>

006031 Lu<sup>a</sup>, Lu<sup>b</sup>, ctl/Lu<sup>a</sup>, Lu<sup>b</sup>, ctl (Id-n°: 51230) human, 1 x 12

#### ID-Diluent 1

009160 **Modified Bromelin solution for red cell suspensions and enzyme tests**  
(Id-n°: 05751), 2 x 100 ml

009180 **Modified Bromelin solution for red cell suspensions and enzyme tests**  
(Id-n°: 05751), 1 x 500 ml

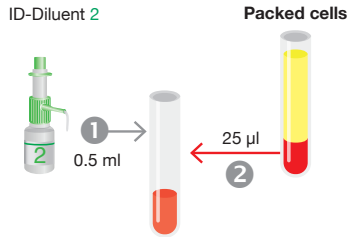




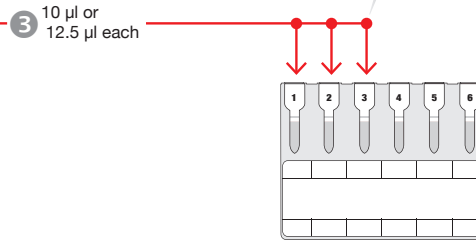
# Single Antigen Testing

using ID-Diluent 2

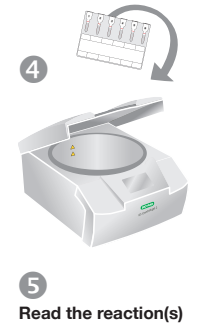
## Preparing the Sample Suspension



## Pipetting (2 tests per ID-Card)



## Centrifugation



## Product Pictures



**DiaClon Anti-M/N**  
(Id-n°: 51210)



**ID-Diluent 2**  
(Id-n°: 05761)  
100 ml/500 ml

### Ordering Information

Catalog # Description

#### **DiaClon Anti-M/N**

006011 M, N, cti/M, N, cti (Id-n°: 51210), 1 x 12

#### **ID-Diluent 2**

009260 Modified LISS for red cell suspensions (Id-n°: 05761), 2 x 100 ml

009280 Modified LISS for red cell suspensions (Id-n°: 05761), 1 x 500 ml

Visit [www.bio-rad.com/immunoematology](http://www.bio-rad.com/immunoematology) for more information ■ *This Quick Guide does not replace the corresponding box-insert!*

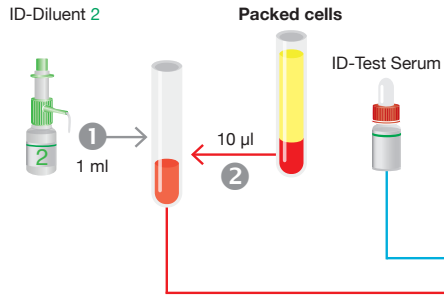
© Bio-Rad Laboratories, Inc.



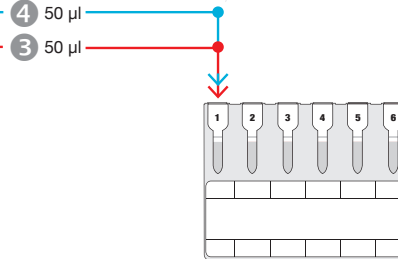
# Single Antigen Testing

in IAT using Liquid Antisera

## Preparing the Sample Suspension



## Pipetting (6 tests per ID-Card)



## Incubation



## Centrifugation



## Product Pictures



**ID-Card Fy<sup>a</sup>**  
(Id-n°: 50350)



**ID-Anti-Fy<sup>a</sup>**  
(Id-n°: 09210)



**ID-Card Fy<sup>b</sup>**  
(Id-n°: 50360)



**ID-Anti-Fy<sup>b</sup>**  
(Id-n°: 09310)



**ID-Card S**  
(Id-n°: 50330)



**ID-Anti-S**  
(Id-n°: 09010)



**ID-Card s**  
(Id-n°: 50340)



**ID-Anti-s**  
(Id-n°: 09110)



**ID-Diluent 2**  
(Id-n°: 05761)  
100 ml/500 ml

## Ordering Information

Catalog # Description

### **ID-Card Fy<sup>a</sup>, ID-Anti-Fy<sup>a</sup>**

007270 **ID-Card Fy<sup>a</sup>: 6 x Fy<sup>a</sup>**  
(Id-n°: 50350), 1 x 12

007271 **Test serum ID-Anti-Fy<sup>a</sup>:**  
(Id-n°: 09210) human, 1 x 3.6 ml

007272 **Test serum ID-Anti-Fy<sup>a</sup>:**  
(Id-n°: 09210) human, 1 x 5 ml

### **ID-Card Fy<sup>b</sup>, ID-Anti-Fy<sup>b</sup>**

007280 **ID-Card Fy<sup>b</sup>: 6 x Fy<sup>b</sup>**  
(Id-n°: 50360), 1 x 12

007281 **Test serum ID-Anti-Fy<sup>b</sup>:**  
(Id-n°: 09310) human, 1 x 3.6 ml

007282 **Test serum ID-Anti-Fy<sup>b</sup>:**  
(Id-n°: 09310) human, 1 x 5 ml

### **ID-Card S, ID-Anti-S**

007130 **ID-Card S: 6 x S**  
(Id-n°: 50330), 1 x 12

007131 **Test serum ID-Anti-S:**  
(Id-n°: 09010) human, 1 x 3.6 ml

007132 **Test serum ID-Anti-S:**  
(Id-n°: 09010) human, 1 x 5 ml

### **ID-Card s, ID-Anti-s**

007140 **ID-Card s: 6 x s**  
(Id-n°: 50340), 1 x 12

007141 **Test serum ID-Anti-s:**  
(Id-n°: 09110) human, 1 x 3.6 ml

007142 **Test serum ID-Anti-s:**  
(Id-n°: 09110) human, 1 x 5 ml

**ID-Diluent 2**  
009260 **Modified LISS for red cell suspensions**  
(Id-n°: 05761), 2 x 100 ml

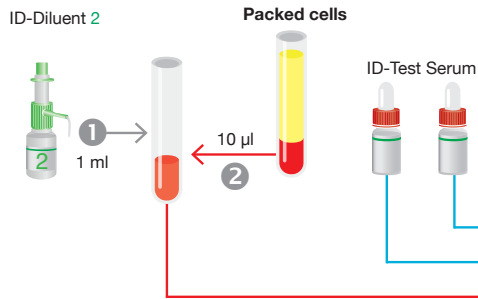
009280 **Modified LISS for red cell suspensions**  
(Id-n°: 05761), 1 x 500 ml



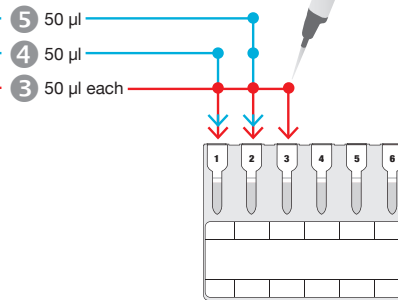
# Single Antigen Testing

in IAT using Liquid Antisera

## Preparing the Sample Suspension



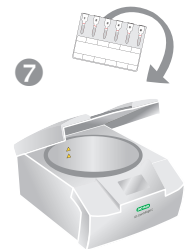
## Pipetting (2 tests per ID-Card)



## Incubation



## Centrifugation



8 Read the reaction(s)

## Product Pictures



**ID-Card Fy<sup>a</sup>/Fy<sup>b</sup>**  
(Id-n°: 51270)



**ID-Anti-Fy<sup>a</sup>/Fy<sup>b</sup>**  
(Id-n°: 46180)  
(Id-n°: 09210/09310)



**ID-Card S/s**  
(Id-n°: 51280)



**ID-Anti-S/s**  
(Id-n°: 46190)  
(Id-n°: 09010/09110)



**ID-Diluent 2**  
(Id-n°: 05761)  
100 ml/500 ml

## Ordering Information

Catalog # Description

### **ID-Card Fy<sup>a</sup>/Fy<sup>b</sup>, ID-Anti-Fy<sup>a</sup>/Fy<sup>b</sup>**

006110 **ID-Card Fy<sup>a</sup>/Fy<sup>b</sup>: Fy<sup>a</sup>, Fy<sup>b</sup>, ctl/Fy<sup>a</sup>, Fy<sup>b</sup>, ctl** (Id-n°: 51270), 1 x 12  
006111 **Test serum ID-Anti-Fy<sup>a</sup>/Fy<sup>b</sup>:** (Id-n°: 46180) human, 2 x 1.4 ml  
007272 **Test serum ID-Anti-Fy<sup>a</sup>:** (Id-n°: 09210) human, 1 x 5 ml  
007282 **Test serum ID-Anti-Fy<sup>b</sup>:** (Id-n°: 09310) human, 1 x 5 ml

### **ID-Card S/s, ID-Anti-S/s**

006120 **ID-Card S/s: S, s, ctl/S, s, ctl** (Id-n°: 51280), 1 x 12  
006121 **Test serum ID-Anti-S/s:** (Id-n°: 46190) human, 2 x 1.4 ml  
007132 **Test serum ID-Anti-S:** (Id-n°: 09010) human, 1 x 5 ml  
007142 **Test serum ID-Anti-s:** (Id-n°: 09110) human, 1 x 5 ml

### **ID-Diluent 2**

009260 **Modified LISS for red cell suspensions** (Id-n°: 05761), 2 x 100 ml  
009280 **Modified LISS for red cell suspensions** (Id-n°: 05761), 1 x 500 ml

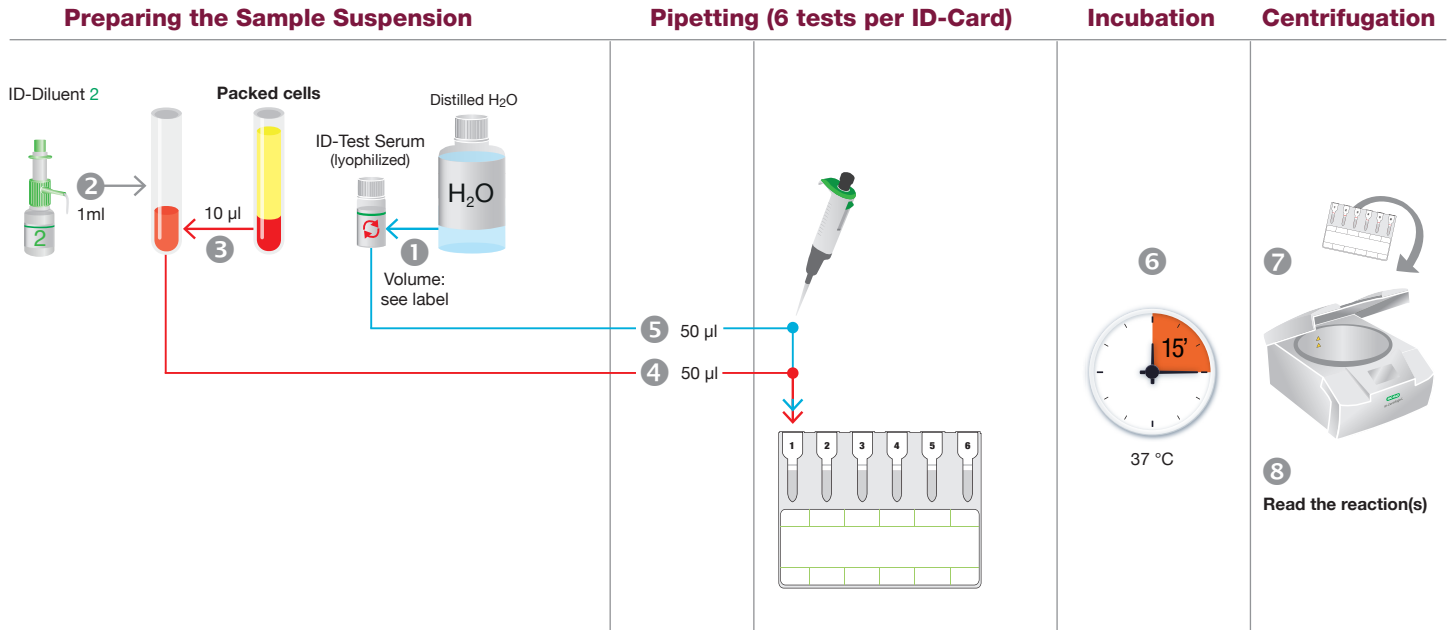
Visit [www.bio-rad.com/immunohematology](http://www.bio-rad.com/immunohematology) for more information ■ *This Quick Guide does not replace the corresponding box-insert!*

© Bio-Rad Laboratories, Inc.

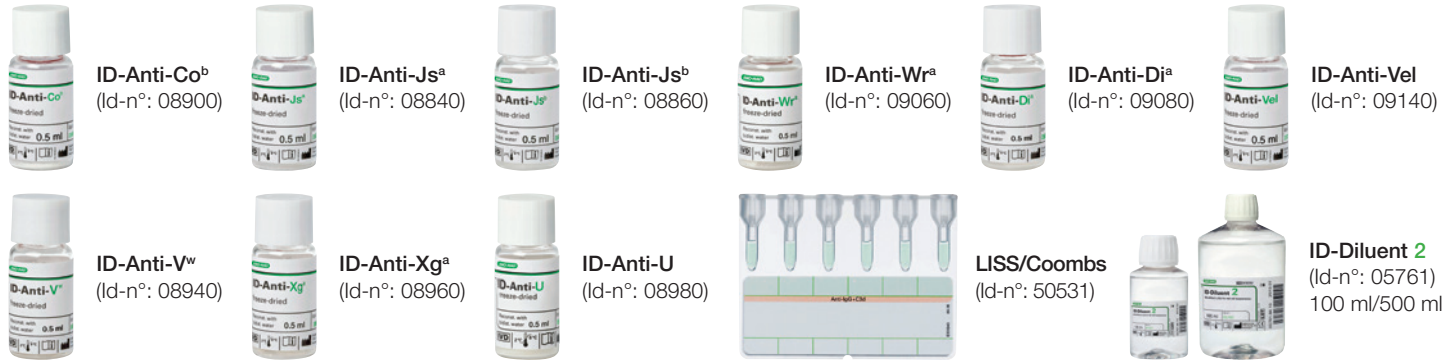


# Single Antigen Testing

in IAT using the ID-Card LISS/Coombs



## Product Pictures



## Ordering Information

Catalog # Description

### ID-Anti-Co<sup>b</sup>

007440 ID-Anti-Co<sup>b</sup>: vial (Id-n°: 08900), 1 x 0.5 ml

### ID-Anti-Js<sup>a</sup>

007400 ID-Anti-Js<sup>a</sup>: vial (Id-n°: 08840), 1 x 0.5 ml

### ID-Anti-Js<sup>b</sup>

007390 ID-Anti-Js<sup>b</sup>: vial (Id-n°: 08860), 1 x 0.5 ml

### ID-Anti-Wr<sup>a</sup>

007410 ID-Anti-Wr<sup>a</sup>: vial (Id-n°: 09060), 1 x 0.5 ml

### ID-Anti-Di<sup>a</sup>

007420 ID-Anti-Di<sup>a</sup>: vial (Id-n°: 09080), 1 x 0.5 ml

### ID-Anti-Vel

007430 ID-Anti-Vel: vial (Id-n°: 09140), 1 x 0.5 ml

### ID-Anti-V<sup>w</sup>

007450 ID-Anti-V<sup>w</sup>: vial (Id-n°: 08940), 1 x 0.5 ml

### ID-Anti-Xg<sup>a</sup>

007460 ID-Anti-Xg<sup>a</sup>: vial (Id-n°: 08960), 1 x 0.5 ml

### ID-Anti-U

007470 ID-Anti-U: vial (Id-n°: 08980), 1 x 0.5 ml

### LISS/Coombs

004014 6 x AHG (Anti-IgG + C3d) tests

(Id-n°: 50531) rabbit, 4 x 12

004017 6 x AHG (Anti-IgG + C3d) tests

(Id-n°: 50531) rabbit, 24 x 12

004016 6 x AHG (Anti-IgG + C3d) tests

(Id-n°: 50531) rabbit, 60 x 12

004015 6 x AHG (Anti-IgG + C3d) tests

(Id-n°: 50531) rabbit, 112 x 12

### ID-Diluent 2

009260 Modified LISS for red cell suspensions

(Id-n°: 05761), 2 x 100 ml

009280 Modified LISS for red cell suspensions

(Id-n°: 05761), 1 x 500 ml

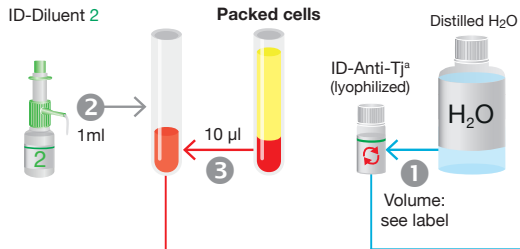




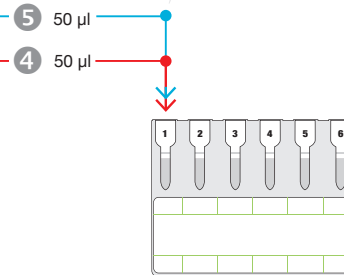
# Single Antigen Testing

in IAT using ID-Anti-Tj<sup>a</sup>

## Preparing the Sample Suspension



## Pipetting (6 tests per ID-Card)



## Incubation



## Centrifugation



## Product Pictures



**Coombs Anti-IgG**  
(Id-n°: 50540)



**ID-Anti-Tjª**  
(Id-n°: 09040)



**ID-Diluent 2**  
(Id-n°: 05761)  
100 ml/500 ml

### Ordering Information

Catalog # Description

#### Coombs Anti-IgG

004024 **6 x AHG (Anti-IgG) tests** (Id-n°: 50540) rabbit, 4 x 12  
004027 **6 x AHG (Anti-IgG) tests** (Id-n°: 50540) rabbit, 24 x 12  
004026 **6 x AHG (Anti-IgG) tests** (Id-n°: 50540) rabbit, 60 x 12  
004025 **6 x AHG (Anti-IgG) tests** (Id-n°: 50540) rabbit, 112 x 12

#### ID-Anti-Tjª

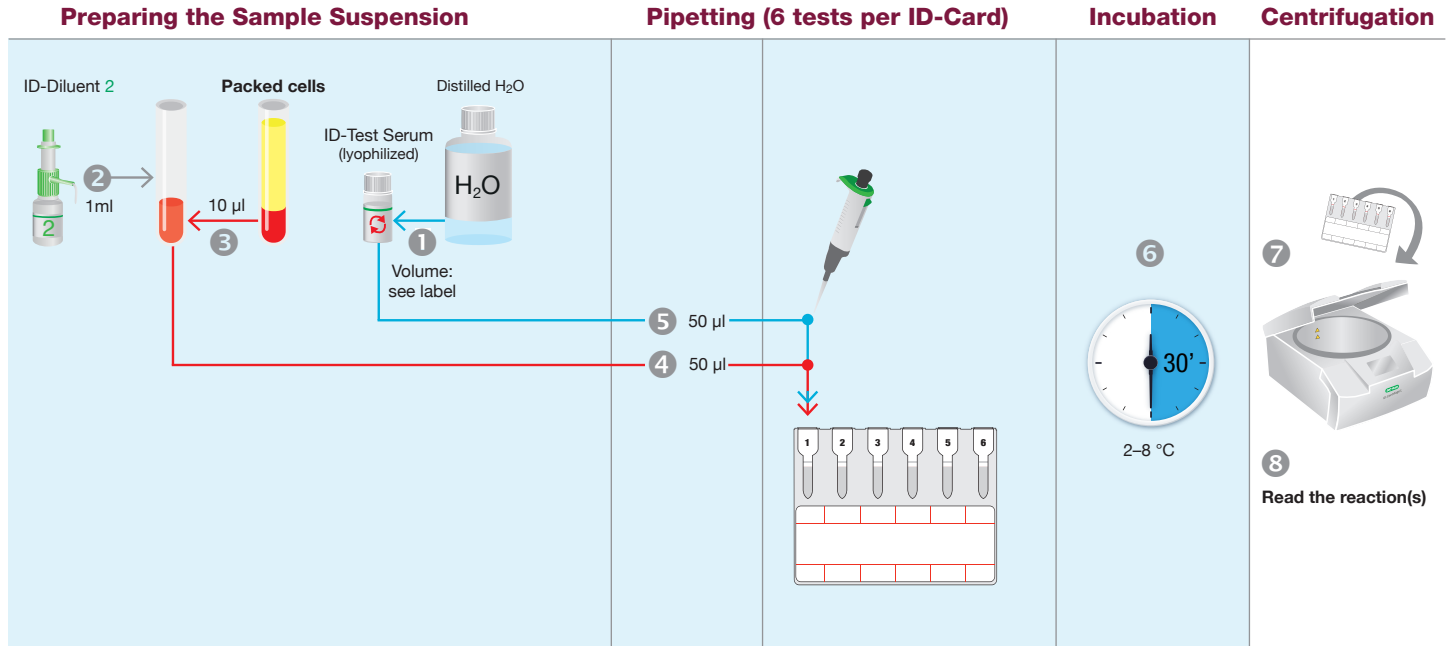
007490 **ID-Anti-Tjª: vial** (Id-n°: 09040), 1 x 0.5 ml

#### ID-Diluent 2

009260 **Modified LISS for red cell suspensions** (Id-n°: 05761), 2 x 100 ml  
009280 **Modified LISS for red cell suspensions** (Id-n°: 05761), 1 x 500 ml

# Single Antigen Testing

# using the ID-Card NaCl, Enzyme Test and Cold Agglutinins and Lyophilized Antisera



## Product Pictures



**NaCl, Enzyme Test and Cold Agglutinins**  
(Id-n°: 50520)



**ID-Anti-I**  
(Id-n°: 08830)



**ID-Anti-i**  
(Id-n°: 08880)



**ID-Diluent 2**  
(Id-n°: 05761)  
100 ml/500 ml

### Ordering Information

Catalog # Description

#### NaCl, Enzyme Test and Cold Agglutinins

005014	<b>A<sub>1</sub>, A<sub>2</sub>, B/A<sub>1</sub>, A<sub>2</sub>, B or A<sub>1</sub>, B/A<sub>1</sub>, B/A<sub>1</sub>, B or IP, IIP, IIIP or IP, IIP, AC</b> (Id-n°: 50520), 4 x 12
005017	<b>A<sub>1</sub>, A<sub>2</sub>, B/A<sub>1</sub>, A<sub>2</sub>, B or A<sub>1</sub>, B/A<sub>1</sub>, B/A<sub>1</sub>, B or IP, IIP, IIIP or IP, IIP, AC</b> (Id-n°: 50520), 24 x 12
005016	<b>A<sub>1</sub>, A<sub>2</sub>, B/A<sub>1</sub>, A<sub>2</sub>, B or A<sub>1</sub>, B/A<sub>1</sub>, B/A<sub>1</sub>, B or IP, IIP, IIIP or IP, IIP, AC</b> (Id-n°: 50520), 60 x 12
005015	<b>A<sub>1</sub>, A<sub>2</sub>, B/A<sub>1</sub>, A<sub>2</sub>, B or A<sub>1</sub>, B/A<sub>1</sub>, B/A<sub>1</sub>, B or IP, IIP, IIIP or IP, IIP, AC</b> (Id-n°: 50520), 112 x 12

#### ID-Anti-I

007371 **ID-Anti-I: vial** (Id-n°: 08830), 1 x 0.5 ml

#### ID-Anti-i

007380 **ID-Anti-i: vial** (Id-n°: 08880), 1 x 0.5 ml

#### ID-Diluent 2

009260 **Modified LISS for red cell suspensions** (Id-n°: 05761), 2 x 100 ml  
009280 **Modified LISS for red cell suspensions** (Id-n°: 05761), 1 x 500 ml



BIO-RAD is a trademark of Bio-Rad Laboratories, Inc.  
DIACELL and DIAPANEL are trademarks of Bio-Rad Europe, GmbH in certain jurisdictions.

**BIO-RAD**

**Bio-Rad  
Laboratories, Inc.**

**For further information, please contact the Bio-Rad office nearest you  
or visit our website at [www.bio-rad.com/diagnostics](http://www.bio-rad.com/diagnostics)**

**Clinical  
Diagnostics Group**

**Website** [www.bio-rad.com/diagnostics](http://www.bio-rad.com/diagnostics) **Australia** +61 (2) 9914 2800 **Austria** +43 (0) 1 877 89 01 9 **Belgium** +32 (0) 3 710 53 00 **Brazil** +55 11 3065 7550 **Canada** +1 514 334 4372  
**China** +86 21 6169 8500 **Czech Republic** +420 241 431 660 **Denmark** +45 44 52 10 00 **Finland** +358 9 804 22 00 **France** +33 (0)1 47 95 60 00 **Germany** +49 (0) 89 31884 393  
**Greece** +30 210 7774396 **Hong Kong** +85 2 2789 3300 **Hungary** +36 1 459 6190 **India** +91 124 4029300 **Israel** +972 03 963 6025 **Italy** +39 024 94 86 600  
**Japan** +81 3 6361 7070 **Korea** +82 080 007 7373 **Mexico** +52 (55) 5488 7670 **The Netherlands** +31 (0)318 540 666 **New Zealand** +64 (9)415 2280 **Norway** +47 23 38 41 30  
**Poland** +48 22 331 99 99 **Portugal** +351 21 47 27 700 **Russia** +7 495 721 1404 **Singapore** +65 6415 3170 **South Africa** +27 11 442 8508 **Spain** +34 91 490 6580  
**Sweden** +46 844 98053 **Switzerland** +41 (0) 61 717 9555 **Taiwan** +886 (2) 2578-7189 **Thailand** (662) 651 8311 **United Kingdom** +44 (0)1923 471301